

**ENGINE**  
railcar.co.uk



# 11.3 LITRE HORIZONTAL DIESEL ENGINE SECTION

(LESS FUEL FILTER, FUEL PIPES  
AND ELECTRICAL INSTALLATIONS)

(A.E.C. TYPE UNITS)

## TYPES

A220L  
A220S  
A220W  
A220Y

## D.T.O. Nos.

1/B, 1/2, 1/5  
1/3, 1/20  
1/6  
1/7, 1/11, 1/11B

**INDEX**  
**UNITS, COMPONENTS AND MAJOR PARTS FOR ENGINES (LESS FLYWHEELS)**

Description	Page No.
Bearings, Main ... ..	A7
Bevel Drive Casing ... ..	A5
Compressed, Air ... ..	A28
Connecting Rods ... ..	A9
Cooler—Oil ... ..	A26
Crankcase and Cylinder Block ... ..	A6, A7
Crankcase, Bottom Half ... ..	A11
Crankshaft ... ..	A9
Cylinder Head ... ..	A2, A3
Dipstick ... ..	A12
Dynamo ... ..	A23
Engines—Types ... ..	A1
Extension, Engine Casing ... ..	A10
Filler, Oil ... ..	A12
Filter, Air ... ..	A28
Filter, Fuel ... ..	A27
Filter, Oil ... ..	A15
Gauze Box ... ..	A11
Gaskets, Sets ... ..	A25
Generator, Speedometer ... ..	A26
Hoses ... ..	A28
Injection System, Fuel ... ..	A21, A22
Lever, Fuel Pump ... ..	A27
Lifting Gear, Engine ... ..	A29, A30
Non-Standard Items (Oversize and Undersize) ... ..	A24, A25
Pistons and Rings ... ..	A9
Pre-Cleaner, Air ... ..	A28
Pump, Fuel Injection ... ..	A21
Pump, Oil and Fittings ... ..	A13, A14
Pump, Water ... ..	A16
Pulley, Fan Drive ... ..	A9
Pulley, Water Pump Drive ... ..	A16
Right Angle Drive ... ..	A18, A19
Rocker Gear ... ..	A4
Starter Motor and Straps ... ..	A23
Suspension, Engine ... ..	A31, A32, A33
Switch, Oil Pressure ... ..	A26
Tensioner, Belt ... ..	A17

## NUMERICAL INDEX TO PART NUMBERS

Manufacturer's Basic Part No.	B.R. Catalogue No.	Page	Manufacturer's Basic Part No.	B.R. Catalogue No.	Page
A220LX	9/15/29960	A1	AA6320	9/15/35543	A4
A220SX	9/15/29965	A1	AA6937	9/15/35695	A6
A220VWX		A1	AA8335	9/15/33120	A11
A220YX	9/15/29970	A1	AA9303	9/15/56310	A13
A0561	9/15/56257	A13	AB0616	9/15/40319	A25
A5742	9/15/30595	A9	AB0620	9/15/40320	A25
A6137	9/15/56263	A13	AB0911	9/15/56271	A13
A6138	9/15/56266	A13	AB0912	9/15/56274	A13
A9175	9/15/35497	A6	AB2105	9/15/58073	A28
A9185	9/15/75696	A6	AB2501	9/15/33177	A12
A1/1153	9/15/61475	A16	AB2503	9/15/33175	A12
A1/1155	9/15/61470	A16	AB2602	9/15/61445	A17
A1/2546	9/15/33140	A12	AB2609	9/15/61446	A17
A1/3775	9/15/55280	A15	AB2701	9/15/35350	A5
A1/4727	9/15/42077	A21	AB2703	9/15/35684	A5
A1/4728	9/15/35360	A5	AB2706	9/15/35352	A5
A1/7628	9/15/30580	A9	AB2707	9/15/35356	A5
A1/7634	9/15/30575	A9	AB2906	9/15/34190	A20
A2/2936	9/15/33065	A11	AB3014	9/15/35424	A10
A2/2937	9/15/33089	A11	AB3015	9/15/35422	A10
A2/2938	9/15/35713	A11	AB3022	9/15/35423	A10
A2/2948	9/15/33091	A11	AB3406	9/15/35462	A10
A2/5609S	9/15/38032	A9	AB3407	9/15/35465	A10
A2/9225A	9/15/40303	A2	AB3512	9/15/37515	A19
A2/9225B	9/15/40304	A2	AB3522	9/15/37605	A19
A5/5514	9/15/38046	A9	AB3602	9/15/75477	A23
A5/5527	9/15/38063	A25	AB3806	9/15/37530	A18
A5/5528	9/15/38064	A25	AB3807	9/15/37542	A18
A6/2280	9/15/46625	A22	AB3809	9/15/37603	A18
A7/2202	9/15/35574	A7	AB4103	9/15/34192	A20
A7/2203	9/15/35395	A5, A15	A10461	9/15/40197	A2
A7/2245	9/15/35414	A10	A10470	9/15/40195	A2
A8/2224	9/15/55805	A14	A10531	9/15/40194	A2
A8/2225	9/15/55775	A14	A10532	9/15/40193	A2
A8/2226	9/15/55785	A14	A11031	9/15/35658	A8
A8/2245	9/15/46630	A21	A11954		A9
A8/2246	9/15/46575	A21	A12050		A9
A8/2249	9/15/33132	A11	A12322	9/15/59240	A9
A9/2295	9/15/55745	A14	A13555	9/15/61436	A17
A9/2296	9/15/55735	A14	A13558	9/15/70000	A23
A10/2279	9/15/34223	A20	A13560	9/15/58195	A26
A11/2256	9/15/46594	A22	A13575	9/15/61437	A17
A11/2257	9/15/46595	A22	A14964	9/15/30585	A9
A11/2270	9/15/46590	A22	A15340	9/15/35493	A4
A11/2271	9/15/46591	A22	A15465	9/15/35601	A4
A11/2272	9/15/46592	A22	A15466	9/15/35388	A5
A11/2273	9/15/46593	A22	A15475	9/15/34191	A20
AA2259	9/15/40164	A2	A15477	9/15/35603	A4
AA2440	9/15/33100	A11	A15498	9/15/35544	A4
AA2535	9/15/33077	A11	A16138	9/15/35481	A4
AA2734	9/15/40247	A4	A16247	9/15/35482	A4
AA2735	9/15/40261	A4	A16313	9/15/35589	A4
AA2813	9/15/40250	A4	A16314	9/15/35588	A4
AA2816	9/15/40316	A4	A16416	9/15/40270	A4
AA3308	9/15/55265	A15	A16505	9/15/40271	A4
AA3367	9/15/55250	A15	A19096	9/15/35717	A12
AA3369	9/15/55251	A15	A19234	9/15/35716	A12
AA4422	9/15/40240	A4	A19649	9/15/42074	A21
AA4663	9/15/40313	A3	A19752	9/15/33151	A12
AA4681	9/15/40312	A3	A20729	9/15/56259	A13
AA4815	9/15/40253	A4	A20827	9/15/56294	A13
			A20828	9/15/56293	A13
			A20831	9/15/56295	A13



**NUMERICAL INDEX TO PART NUMBERS**

Manufacturer's Basic Part No.	B.R. Catalogue No.	Page	Manufacturer's Basic Part No.	B.R. Catalogue No.	Page
A20925	9/15/56311	A13	A75525	9 15 40314	A4
A20926	9/15/56312	A13	A75630	9 15 40248	A4
A21127	9/15/56289	A13	A75705	9 15 40264	A4
A21131	9/15/56290	A13	A75905	9 15 40260	A4
A21765	9/15/61532	A17	A76988	9 15 35381	A5
A21773	9/15/61493	A16	A78203	9 15 55272	A15
A21777	9/15/70013	A23	A78207	9 15 56299	A13
A21778	9/15/61458	A17	A78213	9 15 56255	A13
A21787	9/15/58205	A26	A78310	9 15 56297	A13
A21791	9/15/30596	A9	A78402	9 15 35615	A8
A23032	9/15/35391	A5, A21	A78691	9 15 35445	A10
A23947	9/15/61500	A16	A78692	9 15 35446	A10
A24024	9/15/61503	A16	A79009	9 15 55734	A14
A26529	9/15/40182	A2	A79907	9 15 55266	A15
A26533	9/15/40181	A2	A80932	9 15 35592	A4
A26543	9/15/40191	A2	A80941	9 15 35593	A4
A27418	9/15/61478	A16	A81450	9 15 55260	A15
A31016	9/15/40215	A3	A81505	9 15 55270	A15
A31022	9/15/61498	A16	A81930	9 15 35622	A8
A33115		A5	A81931	9 15 32131	A31
A33122		A20	A81932	9 15 32130	A31
A33124		A5	A85062	9 15 40176	A2
A35608	9/15/46580	A22	A85069	9 15 40174	A2
A44425	9/15/38061	A9	A85071	9 15 59282	A25
A46605	9/15/34209	A20	A85073	9 15 59285	A25
A54606	9/15/38041	A9	A85074	9 15 59286	A25
A55502	9/15/61480	A16	A85093	9 15 59281	A25
A55503	9/15/61481	A16	A88024	9 15 32112	A31, A32
A56461	9/15/40290	A3	A88026	9 15 32113	A32
A56708	9/15/30601	A9	A89015		A15
A56709	9/15/30603	A9	A89101	9 15 55276	A15
A62521	9/15/40307	A3	A92607	9 15 37592	A19
A62522	9/15/40308	A3	A92608	9 15 37595	A18
A62523	9/15/40309	A3	A93402	9 15 35705	A18
A63402	9/15/61483	A16	A93403	9 15 35606	A18
A63501	9/15/61451	A17	A93708	9 15 37561	A19
A63601	9/15/61450	A17	A93709	9 15 37560	A18
A63701	9/15/61464	A17	A93710	9 15 37579	A19
A63802	9/15/61465	A17	A93711	9 15 37580	A18
A64001	9/15/35380	A5	A93712	9 15 37536	A18
A70305	9/15/58202	A26	A93713	9 15 37538	A18
A70753	9/15/40211	A3	A93714	9 15 37540	A19
A72577	9/15/40155	A3	A93726		A18
A72578	9/15/40147	A3	A93727	9 15 37588	A18
A72632	9/15/40212	A3	A1/11705	9 15 38048	A9, A25
A72907	9/15/35542	A7	A1/12106	9 15 38033	A9
A73001	9/15/40183	A2	A1/12107	9 15 59245	A25
A73103	9/15/40167	A2	A1/12108	9 15 59246	A25
A73237	9/15/33080	A11	A1/12109	9 15 59247	A25
A73313	9/15/33074	A11	A1/14295	9 15 35484	A7
A74312	9/15/30584	A9	A1/14296	9 15 35483	A7
A74412	9/15/30583	A9	A1/14418A	9 15 35690	A6
A74602	9/15/30600	A9, A10	A1/14431A	9 15 35692	A6
A74603	9/15/34230	A7, A20	A1/14432A	9 15 35691	A6
A74719	9/15/30593	A9	A1/14433A	9 15 35693	A6
A74845	9/15/35668	A8	A1/14745	9 15 35489	A7
A74962	9/15/30588	A9	A1/14746	9 15 35490	A7
A75207	9/15/40162	A2	A1/15400	9 15 58247	A26
A75313	9/15/40163	A2	A1/15408	9 15 35602	A4
A75414		A4	A1/17174		A6

**NUMERICAL INDEX TO PART NUMBERS**

Manufacturer's Basic Part No.	B.R. Catalogue No.	Page	Manufacturer's Basic Part No.	B.R. Catalogue No.	Page
A1/17253		A11	A3/19440	9/15/35563	A4
A1/21721	9/15/37576	A19	A3/19492	9/15/35448	A10
A1/21792	9/15/37606	A19	A3/19493	9/15/35619	A8
A1/22879	9/15/37552	A18	A3/19494	9/15/35366	A5
A1/22890	9/15/42080	A21	A3/19495	9/15/40214	A3
A1/22892	9/15/35392	A5	A3/19496	9/15/40213	A2
A1/23818	9/15/61473	A16	A3/19497	9/15/33182	A11
A1/24452	9/15/62951	A26	A3/19498	9/15/55802	A14
A1/24458	9/15/61466	A16	A3/19499	9/15/56251	A13
A1/24464	9/15/58085	A28	A3/25716	9/15/61468	A16
A1/24492	9/15/58086	A28	A3/25731	9/15/40230	A3
A1/27257	9/15/40224	A3	A3/25732	9/15/40231	A3
A1/27258	9/15/40225	A3	A3/60670	9/15/34253	A20
A1/57172	9/15/35506	A6	A3/75111	9/15/34204	A20
A1/59311	9/15/35611	A8	A3/75130	9/15/35364	A5
A1/70419		A2	A4/11640	9/15/38053	A9
A1/77122	9/15/58028	A28	A4/11641	9/15/38052	A9
A1/77135	9/15/40200	A2	A4/11645	9/15/59301	A25
A1/77152	9/15/58056	A28	A4/11646	9/15/59296	A25
A1/77179	9/15/40201	A2	A4/11647	9/15/59295	A25
A2/13798	9/15/35485	A7	A4/11648	9/15/59302	A25
A2/14725	9/15/59337	A24	A4/11656	9/15/38051	A9
A2/14726	9/15/59361	A24	A4/11659	9/15/59298	A25
A2/14727	9/15/59369	A24	A4/11660	9/15/59299	A25
A2/14728	9/15/59377	A24	A4/13765	9/15/59335	A24
A2/14729	9/15/59385	A24	A4/13766	9/15/59359	A24
A2/14730	9/15/59393	A24	A4/13767	9/15/59367	A24
A2/14731	9/15/59338	A24	A4/13768	9/15/59375	A24
A2/14732	9/15/59362	A24	A4/13769	9/15/59383	A24
A2/14733	9/15/59370	A24	A4/13770	9/15/59391	A24
A2/14734	9/15/59378	A24	A4/13771	9/15/59336	A24
A2/14735	9/15/59386	A24	A4/13772	9/15/59360	A24
A2/14736	9/15/59394	A24	A4/13773	9/15/59368	A24
A2/75160	9/15/35613	A8	A4/13774	9/15/59376	A24
A2/75161	9/15/35579	A7	A4/13775	9/15/59384	A24
A2/75162	9/15/35363	A5	A4/13776	9/15/59392	A24
A2/75164	9/15/40237	A2	A4/13777	9/15/59333	A24
A2/75166	9/15/40236	A2	A4/13778	9/15/59357	A24
A2/75167	9/15/56250	A13	A4/13779	9/15/59365	A24
A2/75171	9/15/35509	A6, A7	A4/13780	9/15/59373	A24
A2/75172	9/15/35510	A6, A7	A4/13781	9/15/59381	A24
A2/75173	9/15/35576	A7	A4/13782	9/15/59389	A24
A2/75186	9/15/40235	A2	A4/13783	9/15/59334	A24
A2/75188	9/15/35699	A7	A4/13784	9/15/59358	A24
A2/75197	9/15/35365	A5	A4/13785	9/15/59366	A24
A3/13700	9/15/35487	A7	A4/13786	9/15/59374	A24
A3/13701	9/15/35486	A7	A4/13787	9/15/59382	A24
A3/13702	9/15/35488	A7	A4/13788	9/15/59390	A24
A3/14205	9/15/59331	A24	A4/19402	9/15/55780	A14
A3/14206	9/15/59355	A24	A4/19403	9/15/55772	A14
A3/14207	9/15/59363	A24	A4/19404	9/15/55740	A14
A3/14208	9/15/59371	A24	A4/19405	9/15/33171	A12
A3/14209	9/15/59379	A24	A4/19406	9/15/35562	A7
A3/14210	9/15/59387	A24	A4/19407	9/15/35504	A6, A7
A3/14211	9/15/59332	A24	A4/19408	9/15/55278	A14, A15
A3/14212	9/15/59356	A24	A4/19409	9/15/35505	A6, A7
A3/14213	9/15/59364	A24	A4/19410	9/15/40217	A3
A3/14214	9/15/59372	A24	A4/19411	9/15/35368	A5
A3/14215	9/15/59380	A24	A4/19412	9/15/35393	A5
A3/14216	9/15/59388	A24	A4/19414	9/15/61467	A16



**NUMERICAL INDEX TO PART NUMBERS**

Manufacturer's Basic Part No.	B.R. Catalogue No.	Page	Manufacturer's Basic Part No.	B.R. Catalogue No.	Page
A4/19418	9/15/33172	A12	V38142	9/15/32085	A30
A4/19419	9/15/35559	A7	V38148	9/15/32077	A30
A4/19427	9/15/35558	A7	V38150	9/15/32102	A30
A4/19429	9/15/34215	A20	Y8201	9/15/32111	A33
A4/19434	9/15/61484	A16	Y9606	9/15/32124	A32
A4/19440	9/15/34195	A20	Y1/2841	9/15/32157	A31
A4/19477	9/15/35367	A5	Y1/2847	9/15/32183	A31
A4/19492	9/15/40208	A2	Y1/2850	9/15/32184	A31
A5/19472	9/15/55267	A15	Y10270	9/15/32108	A32
A6/11538	9/15/38050	A9	Y10271	9/15/32109	A31
A6/11539	9/15/59291	A25	Y10273	9/15/35612	A8, A32
A6/11540	9/15/59292	A25	Y20707	9/15/32110	A31
F19714	9/15/40149	A3	Y20708	9/15/32186	A32
G25250	9/15/35571	A7, A20	Y20711	9/15/32141	A32
G25269	9/15/34220	A20	Y23505	9/15/32114	A31
G1/14722	9/15/42087	A21	Y23506	9/15/32115	A31
G1/25157	9/15/34210	A20	Y29806	9/15/32152	A33
R1468	9/15/46829	A27	Y29807	9/15/32154	A33
R2/11286		A27	Y30412	9/15/32123	A32
S1437	9/15/33152	A12	Y30428	9/15/32122	A32
S1439	9/15/33150	A12	Y31711	9/15/32188	A33
S10639	9/15/33153	A12	Y31712	9/15/32098	A33
S14603	9/15/33154	A12	Y1/25611	9/15/32153	A31
S1/13319	9/15/62900	A26	Y1/26159	9/15/32156	A31
S2/13354	9/15/55730	A14	Y1/26160	9/15/32155	A31
S2/13368	9/15/55731	A14	Z1003	9/15/58050	A28
V4407	9/15/75710	A23	Z1804	9/15/56315	A15
V4410	9/15/75510	A23	Z10661	9/15/46803	A22
V4424	9/15/75509	A23	Z11023	9/15/40255	A4
V7809	9/15/70009	A23	Z11024	9/15/35492	A4, A13
V7904	9/15/32175	A29	Z14530	9/15/58072	A28
V7809	9/15/70009	A23	Z30679	9/15/33135	A11
V7906	9/15/32178	A29	Z30898	9/15/35715	A12
V7908	9/15/32180	A29	Z31992	9/15/34200	A4, A13, etc.
V7911	9/15/32176	A29	Z32034		A7, A10, etc.
V7912		A29	Z32047	9/15/62930	A23, A26
V7914	9/15/32081	A29	Z43123	9/15/34198	A20
V7915	9/15/32073	A29	Z43334	9/15/35682	A5
V7916	9/15/32094	A29	Z43485	9/15/75481	A23
V1/0124	9/15/75489	A23	Z43741	9/15/35662	A8
V1/0155	9/15/75488	A23	Z43778	9/15/35455	A10
V1/0165	9/15/70014	A23	Z43797	9/15/35516	A2, A6, etc.
V1/0190	9/15/62942	A26	Z43962	9/15/32121	A31
V1/0191	9/15/62935	A26	Z43972	9/15/58077	A28
V10139	9/15/75486	A23	Z43973	9/15/58061	A28
V10170	9/15/75487	A23	Z44018	9/15/30586	A9
V11165	9/15/70007	A23	Z44028	9/15/40180	A2
V18423	9/15/33092	A11	Z44040	9/15/56270	A13
V18424	9/15/33093	A11	Z44093	9/15/35540	A7
V38104	9/15/32079	A29	Z44241	9/15/37562	A18
V38107	9/15/32081	A30	Z44242	9/15/37563	A18
V38113	9/15/32089	A29	Z44243	9/15/37564	A19
V38114	9/15/32086	A29	Z44505	9/15/33084	A11
V38119	9/15/32088	A29	Z44564	9/15/33081	A10, A11
V38125	9/15/32087	A29	Z44565	9/15/34235	A20
V38126	9/15/32091	A30	Z44795	9/15/56984	A26
V38130	9/15/32084	A29	Z44907	9/15/37591	A18
V38131	9/15/32080	A30	Z45298	9/15/45516	A27
V38140	9/15/32078	A30	Z45439	9/15/33133	A11
V38141	9/15/32090	A30	Z47007	9/15/70015	A23, A26
			Z47839	9/15/32120	A32

**NUMERICAL INDEX TO PART NUMBERS**

Manufacturer's Basic Part No.	B.R. Catalogue No.	Page	Manufacturer's Basic Part No.	B.R. Catalogue No.	Page
Z47076	9/15/33157	A12	Z2/31950	9/15/30591	A9
Z47095	9/15/33158	A12	Z2/32006	9/15/35508	A6
Z47854	9/15/37604	A19	Z2/32044		A8, A11, etc.
Z48856	9/15/61494	A16	Z2/32045		A5, A15
Z50015	9/15/33078	A11	Z2/32047	9/15/35373	A5, A11, etc.
Z50607	9/15/32151	A31	Z2/32049		A5
Z50608	9/15/32150	A31	Z2/32056		A22
Z1/10114	9/15/56275	A13	Z2/32061		A15
Z1/10125	9/15/56272	A13	Z2/32062		A23
Z1/10126	9/15/35552	A4	Z2/32075	9/15/58075	A28
Z1/10141	9/15/35354	A5	Z2/43712	9/15/33098	A11
Z1/10159	9/15/34193	A20	Z2/43748	9/15/35663	A8
Z1/10165	9/15/56262	A13	Z2/44002	9/15/38062	A9
Z1/30649	9/15/62945	A23, A26	Z2/44021	9/15/30587	A9
Z1/30710	9/15/61510	A17	Z2/44500	9/15/37575	A18
Z1/30716	9/15/30581	A9	Z2/44527	9/15/37574	A18
Z1/30756	9/15/35411	A10	Z2/45449	9/15/55273	A15
Z1/31960		A5	Z2/45476	9/15/61501	A16
Z1/32033	9/15/40252	A4	Z2/45477	9/15/33161	A12
Z1/32063		A11	Z2/45496	9/15/58076	A28
Z1/43108	9/15/30589	A9	Z2/46404	9/15/58204	A26
Z1/43111	9/15/61485	A16	Z2/46565	9/15/55756	A14
Z1/43119	9/15/30590	A9	Z2/46566	9/15/55757	A14
Z1/43226	9/15/33134	A11	Z2/46567	9/15/55758	A14
Z1/43705	9/15/40150	A3	Z2/46568	9/15/55795	A14
Z1/43754	9/15/30598	A9	Z2/46569	9/15/55796	A14
Z1/44003	9/15/35357	A5, A7	Z2/46570	9/15/55797	A14
Z1/44035	9/15/35709	A10	Z2/46571	9/15/35377	A5
Z1/44062	9/15/35503	A6	Z2/46572	9/15/35378	A5
Z1/44077	9/15/40190	A2	Z2/46573	9/15/35379	A5
Z1/44078	9/15/35541	A7	Z2/46574	9/15/35399	A5
Z1/44079	9/15/34213	A7, A20, etc.	Z2/46575	9/15/35400	A5
Z1/44080	9/15/33073	A11	Z2/46576	9/15/35401	A5
Z1/44081	9/15/42081	A21	Z2/46595	9/15/34244	A20
Z1/44539	9/15/56755	A14	Z2/46596	9/15/34245	A20
Z1/44546	9/15/56283	A13	Z2/46597	9/15/34246	A20
Z1/44555	9/15/35513	A6	Z3/30602	9/15/30604	A9
Z1/44564	9/15/35512	A6	Z3/30616		A5, A15
Z1/44565	9/15/35374	A5	Z3/30692	9/15/40265	A4
Z1/44568	9/15/35581	A7	Z3/30693	9/15/40267	A4
Z1/44703	9/15/35386	A5	Z3/32016	9/15/35567	A4
Z1/44733	9/15/56254	A13	Z3/32046	9/15/37570	A18
Z1/44736	9/15/35387	A5	Z3/43710	9/15/40283	A2
Z1/44737	9/15/42088	A21	Z3/43722	9/15/35583	A4, A13, etc.
Z1/44739	9/15/30594	A9	Z3/43766	9/15/42070	A21
Z1/44740	9/15/35675	A8	Z3/43777	9/15/35514	A6
Z1/44762	9/15/30602	A9	Z3/43778	9/15/35515	A6
Z1/44776	9/15/35600	A4	Z3/45410	9/15/56298	A13
Z1/45470	9/15/55275	A15	Z3/45426	9/15/34248	A20
Z1/46571	9/15/35590	A4	Z3/46504	9/15/61463	A17
Z1/46572	9/15/35591	A4	Z3/46592	9/15/37581	A18, A19
Z1/47007	9/15/38042	A9	Z3/46592A	9/15/37582	A18, A19
Z1/47012	9/15/75485	A22	Z3/46592B	9/15/37583	A18, A19
Z1/47023	9/15/33165	A12	Z3/46593	9/15/58206	A26
Z2/10299	9/15/46830	A27	Z3/46593A	9/15/58207	A26
Z2/30652		A12, A21	Z3/46593B	9/15/58208	A26
Z2/30671	9/15/40266	A4	Z4/30686		A10, A12, etc.
Z2/30750	9/15/35457	A10	Z4/30688		A2, A5, etc.
Z2/31318	9/15/55801	A14, A15	Z4/30690		A5
Z2/31927	9/15/35371	A5	Z4/30692		A6, A7, etc.



**NUMERICAL INDEX TO PART NUMBERS**

Manufacturer's Basic Part No.	B.R. Catalogue No.	Page	Manufacturer's Basic Part No.	B.R. Catalogue No.	Page
Z4/30693		A20	Z7/30532	9/15/35526	A6
Z4/30695		A8, A16	Z7/30533	9/15/35527	A6
Z4/30696		A7, A10, etc.	Z7/30556	9/15/40189	A2
Z4/30697	9/15/33181	A15, A23	Z7/30560	9/15/35536	A6
Z4/30698		A5, A22	Z7/30561	9/15/35537	A6
Z4/30699		A26	Z7/30562	9/15/35432	A10
Z4/30728	9/15/35458	A10	Z7/30574	9/15/40188	A2
Z4/30774	9/15/55296	A15	Z7/30580	9/15/35431	A10
Z4/30789	9/15/55295	A15	Z7/30712	9/15/55760	A14
Z4/31319	9/15/35538	A7	Z7/30760	9/15/55800	A14, A15
Z4/31321	9/15/46617	A22	Z7/30769	9/15/33099	A11
Z4/31395	9/15/46544	A21	Z7/31307	9/15/34273	A20
Z4/46522	9/15/56284	A13	Z8/30530	9/15/35531	A6
Z4/46523	9/15/56285	A13	Z8/30531	9/15/35532	A6
Z4/46524	9/15/56286	A13	Z8/30533	9/15/35527	A6
Z5/30509	9/15/33086	A11	Z8/30534	9/15/35694	A6
Z5/30590	9/15/35534	A6	Z8/30543	9/15/58074	A28
Z5/30594	9/15/33085	A11	Z8/30546	9/15/34251	A11, A20
Z5/30599	9/15/35440	A10	Z8/30722	9/15/32101	A31, A32
Z5/30600		A15, A23	Z8/30736	9/15/32100	A31
Z5/30608		A17	Z8/44852	9/15/37586	A19
Z5/30609		A11, A17, etc.	Z8/44853	9/15/37584	A19
Z5/30683	9/15/35670	A8, A32	Z8/44854	9/15/37577	A19
Z5/30684	9/15/35714	A12	Z8/44855	9/15/37585	A18
Z5/30791	9/15/55792	A14	Z8/44864	9/15/40292	A3
Z5/30792	9/15/55791	A13, A14	Z8/44865	9/15/40192	A3
Z5/31322	9/15/46553	A22	Z8/44866	9/15/40294	A3
Z5/31323	9/15/46805	A22	Z8/44877	9/15/40179	A2
Z5/31341	9/15/56318	A15	Z9/30719	9/15/55771	A14
Z5/31342	9/15/56319	A15	Z9/30777	9/15/32104	A32
Z6/30503	9/15/35436	A10	Z9/30778	9/15/32072	A30
Z6/30516	9/15/35521	A6	Z11/30752	9/15/70005	A23
Z6/30520	9/15/35439	A10	Z11/30779	9/15/35586	A7, A16
Z6/30521	9/15/35520	A6	Z11/30783	9/15/35459	A10
Z6/30574	9/15/35435	A10	Z12/30711	9/15/56321	A15
Z6/30588	9/15/35587	A7	Z12/30725	9/15/32105	A33
Z6/30591	9/15/35438	A10	Z12/30728	9/15/35412	A10
Z6/30610	9/15/58242	A26	Z12/30756	9/15/40276	A2, A21
Z6/30626	9/15/34260	A20	Z12/30761	9/15/58196	A26
Z6/30684	9/15/37590	A18	Z12/30764	9/15/35413	A10
Z6/30685	9/15/40295	A3	Z13/30740	9/15/40277	A3
Z6/30798		A8	Z13/30782	9/15/35681	A5, A22
Z6/31394	9/15/46541	A22	Z14/30710	9/15/75475	A23
Z6/31395	9/15/46804	A22	Z14/30730	9/15/56320	A15
Z6/44891	9/15/61489	A16, A17	Z14/30754	9/15/55761	A14
Z7/30503	9/15/35524	A6	Z14/30781	9/15/42095	A21
Z7/30505	9/15/35517	A6	Z14/30793	9/15/35456	A10
Z7/30506	9/15/35434	A10, A15	Z14/30794	9/15/32185	A31
Z7/30509	9/15/35430	A10	Z15/30707	9/15/35491	A4
Z7/30513	9/15/33095	A11	Z15/30711	9/15/32142	A32
Z7/30517	9/15/35520	A6	Z15/30712	9/15/32143	A32
Z7/30518	9/15/35522	A6	Z15/30713	9/15/35607	A8, A32
Z7/30519	9/15/35523	A6	Z15/30714	9/15/32144	A32
Z7/30520	9/15/35518	A6	Z15/30715	9/15/32145	A32
Z7/30521	9/15/35358	A5	Z15/30718	9/15/35389	A3
Z7/30522	9/15/35359	A5	Z15/30719	9/15/40280	A3
Z7/30525	9/15/33082	A11	Z15/30720	9/15/40281	A3
Z7/30527	9/15/35528	A6	Z15/30721	9/15/35460	A10
Z7/30528	9/15/35529	A6	Z15/30725	9/15/55770	A14
Z7/30529	9/15/35437	A10	Z15/30733	5/15/32140	A31

**NUMERICAL INDEX TO PART NUMBERS**

Manufacturer's Basic Part No.	B.R. Catalogue No.	Page	Manufacturer's Basic Part No.	B.R. Catalogue No.	Page
Z15/30734	9/15/33170	A12	86-33		A11, A15, etc.
Z15/30747	9/15/32102	A32	86-34		A9
Z15/30748	9/15/33169	A12	86-36		A19, A30, etc.
Z15/30773	9/15/62902	A26	86-37		A8, A32
Z15/30777	9/15/32103	A32	86-38		A26, A18, etc.
Z16/30730	9/15/61508	A16	86-39		A19
Z16/30743	9/15/61509	A16	90-34		A23
Z16/30761	9/15/61462	A17	90-35		A29
Z16/30773	9/15/70010	A23	90-38		A32
Z17/30769	9/15/55794	A14	90-164		A10, A26
Z18/30714	9/15/35390	A5	90-166		A15
Z18/30718	9/15/35389	A5	91-65		A16
Z18/30727	9/15/55762	A14	99-5		A4
Z18/30730	9/15/58200	A10	99-133		A15
Z18/30758	9/15/56261	A13	99-217		A9, A25
Z20/30713	9/15/46802	A22	99-271		A16, A17
5-4	9/43/5266	A16, A17	100-3		A13
5-5	9/43/5279	A18, A19	100-4		A9, A11
13-5	9/11/628	A22	100-7		A11, A14, etc.
13-11	9/11/664	A22	100-9		A19, A30, etc.
13-14	9/15/32071	A29	100-10		A15
17-1	9/15/37533	A18	100-11		A16, A31
39-3	9/15/46831	A27	100-12		A31
39-7	9/15/58025	A28	100-14		A8, A11, etc.
39-19	9/15/58026	A28	100-16		A4, A13, etc.
40-35	9/15/32099	A32	100-18		A4, A19
40-41	9/15/61507	A16	100-100		A12
41-108	9/15/42071	A21	100-106		A20
43-95	9/15/32177	A29	101-6		A11
43-97	9/15/34270	A20, A29	103-93	9/15/35582	A4
43-110	9/15/34272	A20	103-194	9/15/55790	A14
43-124	9/15/34271	A20	103-202	9/15/35710	A10
78-591	9/15/46824	A27	103-211	9/15/35689	A6
78-598	9/15/46822	A27	107-442		A26
78-655	9/15/46828	A27	114-19	9/15/32187	A32
78-706	9/15/46820	A27	114-54		A12
78-709	9/15/46821	A27	114-65		A12
78-713	9/15/46826	A27	119-32	9/15/32093	A29
78-722	9/15/46825	A27	119-109	9/15/40315	A4
78-729	9/15/46823	A27	121-103	9/15/30582	A9, A18, etc.
78-739	9/15/46080	A27	121-105	9/15/37578	A19
78-752	9/15/62910	A26	121-144		A8
78-757	9/15/58060	A28	124-1126	9/15/58209	A5
78-766	9/15/58030	A28	124-1154	9/15/37548	A18
78-784	9/75/2070	A27	124-1155	9/15/37546	A18
78-850	9/15/37535	A18	124-1170	9/15/40186	A2
81-260	9/15/46582	A22	124-1200	9/15/40185	A2
81-264	9/15/46619	A22	125-122	9/15/35433	A10
81-312	9/15/99039	A16, A17, etc.	125-155		A12
81-2034	9/15/55732	A14	125-184	9/15/37508	A19
81-2385	9/15/56980	A26	125-191	9/15/33087	A23
85-32		A9, A27, etc.	125-198	9/15/35712	A11
85-33		A8, A32	130-7	9/15/56317	A15
85-34		A4, A12, etc.	130-17	9/15/46809	A27
85-35		A4, A19, etc.	131-107	9/15/35353	A5
85-36		A19, A29	132-3	9/15/46618	A22
85-38		A16	132-12	9/15/56316	A15
85-65	9/15/40311	A3	134-2		A11, A18
85-156		A3	134-3		A8, A21
86-32		A11	134-4		A20



## NUMERICAL INDEX TO PART NUMBERS

Manufacturer's Basic Part No.	B.R. Catalogue No.	Page	Manufacturer's Basic Part No.	B.R. Catalogue No.	Page
134-5		A19, A28	530-549	9 15 70028	A23
134-6		A19, A29	560-2162	9 15 47425	A21
134-8		A17	560-2406	9 15 47380	A21
135-2		A28	560-2548	9 15 42692	A21
135-4		A19	560-3518	9 15 47302	A21
135-32		A9, A19, etc.	562-49	9 15 41839	A22
135-33		A8, A21, etc.	562-50	9 15 41838	A22
135-34		A12, A18, etc.	562-51	9 15 41800	A22
135-35		A30	562-150	9 15 41805	A22
135-36		A20	5002-96	9 15 34275	A20
135-38		A32	5002-97	9 15 34276	A20
135-92		A20	5091-1	9 15 61497	A16
135-94		A20	5091-2	9 15 61499	A16, A17, etc.
136-34	9/15/35707	A8, A29	5091-3	9 15 35376	A5
136-36		A16, A29	5091-32	9 15 30599	A9
136-37	9/15/55739	A14	5092-6	9 15 34240	A20
138-1	9/15/56302	A13	5092-45	9 15 30620	A9
138-16	9/15/33083	A10, A11	5092-96	9 15 34275	A20
138-129	9/15/40310	A3, A16	5092-97	9 15 34276	A20
138-131	9/15/56313	A14			
138-139	9/15/35698	A7, A20			
138-144	9/15/35382	A5, A20			
138-151	9/15/40305	A2, A3, etc.			
138-156	9/15/35383	A5			
138-158	9/15/35697	A7			
138-172	9/15/35711	A10			
138-201	9/15/34259	A20			
138-211	9/15/35688	A6, A7, etc.			
138-217	9/15/46827	A27			
138-223	9/15/35687	A6			
143-8	9/15/40184	A2			
148-18		A12			
149-14		A12			
153-19		A21			
156-79	9/15/35369	A4, A5			
156-165	9/15/56280	A13			
156-168	9/15/37565	A18, A19			
156-169	9/15/61487	A16, A19			
156-174	9/15/37568	A18			
156-175	9/15/58203	A26			
157-5	9/15/35565	A13			
202-3	9/15/56288	A13			
216-151	9/15/63759	A28			
219-21		A4, A8, etc.			
219-24		A8, A31, etc.			
219-25		A6			
219-47	9/15/33079	A11			
251-11	9/15/35449	A10			
255-46	9/15/40151	A3, A8			
332-74		A16, A18			
332-86		A26			
332-97		A28			
332-128		A3, A28			
341-1428	9/15/40157	A3			
341-1730	9/15/35706	A8			
342-54	9/15/62950	A26			
373-368	9/15/58210	A26			
373-414	9/15/58220	A26			
499-2325	9/15/75484	A23			
499-2602		A23			

## ENGINE TYPES

B.R. Cat. No.	A.E.C. Basic Part No.	Description
9/15/29960	A220LX	<b>ENGINE COMPLETE WITH FLYWHEEL (BELT TENSIONER AND DYNAMO)</b>
9/15/29965	A220SX	<b>ENGINE COMPLETE WITH FLYWHEEL (RIGHT ANGLE DRIVE)</b>
	A220WX	<b>ENGINE COMPLETE AS A220SX WITH 2 OIL PRESSURE SWITCHES</b>
9/15/29970	A220YX	<b>ENGINE COMPLETE AS A220LX LESS DYNAMO</b>
<p><b>NOTE:—For Fluid Flywheel see Section J30</b></p>		
<p><b>NOTE:—If an Engine only is required, i.e., without Flywheel, Oil Cooler and Speedometer Generator, the Suffix Letter "X" should be omitted after the Engine Type Number</b></p>		



B.R. Cat. No.	A.E.C. Basic Part No.	Plate Ref.	Designation	Used on	No. Req. per Engine	Remarks
9/15/40303	A2/9225A	<b>A1</b>	<b>ENGINE COMPLETE</b> ... ..	All Models		For Types, see page A.1
9/15/40304	A2/9225B		<b>CYLINDER HEAD COMPLETE WITH VALVES, GUIDES AND STUDS, FRONT</b>	"	1	} 45° Exhaust Valves
9/15/40164	AA2259		<b>CYLINDER HEAD COMPLETE WITH VALVES, GUIDES AND STUDS, REAR</b>	"	1	
			<b>CYLINDER HEAD WITH VALVE GUIDES AND STUDS</b> ... ..	"	2	} With 45° Exhaust Valves
9/15/40188	A1/70419	1	Cylinder Head, Bare ... ..	"	2	
9/15/40189	Z7/30574	2	Stud, Special, $\frac{7}{16}$ " B.S.F. $\times$ $1\frac{3}{4}$ " ... ..	"	8	} Not supplied as Spares
9/15/40186	Z7/30556	3	Stud, Special, $\frac{3}{8}$ " B.S.F. $\times$ $2\frac{1}{8}$ " ... ..	"	12	
9/15/40185	I24-1170	4	Stud, Special, $\frac{3}{8}$ " B.S.F. $\times$ $3\frac{3}{8}$ " ... ..	"	6	} Exhaust Manifold
9/15/40183	I24-1200	5	Stud, Special, $\frac{7}{16}$ " B.S.F. $\times$ $3\frac{1}{2}$ " ... ..	"	6	
9/15/40167	A73001	6	Jacknut, Special ... ..	"	4	} Valve Rocker Bracket
9/15/40184	A73103	7	Collar, Jacknut ... ..	"	4	
9/15/40179	I43-8	8	Screw, Ch. Hd., No. 1 B.A. $\times$ $\frac{3}{8}$ " ... ..	"	4	} Jacknut Collar
9/15/40182	Z8/44877		Sheath, Injector ... ..	"	6	
9/15/40181	A26529	<b>A2</b>	Guide, Inlet Valve ... ..	"	6	} 45°
9/15/40180	A26533	2	Guide, Exhaust Valve ... ..	"	6	
9/15/40176	Z44028	3	Dowel, Valve ... ..	"	6	} For Oversize Insert
9/15/40174	A85062		Insert, Inlet Valve ... ..	"	6	
9/15/40191	A85069		Insert, Exhaust Valve ... ..	"	6	} 45°
9/15/40197	A26543	4	Restraint, Inlet Valve ... ..	"	6	
9/15/40195	A10461	5	<b>Valve, Inlet</b> ... ..	"	6	} For Oversize Insert
9/15/40193	A10470	6	<b>Valve, Exhaust</b> ... ..	"	6	
9/15/40194	A10532	7	<b>Spring, Valve, Inner</b> ... ..	"	12	} See page A.25
9/15/40162	A10531	8	<b>Spring, Valve, Outer</b> ... ..	"	12	
9/15/40163	A75207	9	Cotter, Split, Valve ... ..	"	24	} 45°
9/15/40190	A75313	10	Cup, Top ... ..	"	12	
9/15/40236	Z1/44077	<b>A1</b>	Dowel ... ..	"	4	Cylinder Head to Engine Casing
9/15/40237	A2/75166	10	Cover Plate, Front ... ..	"	1	} Cylinder Heads
9/15/40213	A2/75164	11	Cover Plate, Rear ... ..	"	1	
9/15/40305	A3/19496	12	<b>Joint</b> ... ..	"	2	} Cover Plate to Cylinder Heads
9/15/40235	Z43797	13	Setscrew, Special, $\frac{5}{16}$ " B.S.F. $\times$ 21 m/m, Long ... ..	"	30	
9/15/40283	I38-151	14	Washer, Copper, $\frac{21}{64}$ " $\times$ 15 $\times$ 1 m/m., Special ... ..	"	30	} Rear Cylinder Head
9/15/40200	A2/75186	16	Plate, Blanking ... ..	"	1	
9/15/40201	Z3/43710	17	Setscrew, Special, $\frac{5}{16}$ " B.S.F. $\times$ 19 m/m, Long ... ..	"	3	} Air Intake Elbow
9/15/40276	A1/77135	18	Elbow, Air Intake ... ..	A220L/Y	1	
9/15/40208	A1/77179	18	Elbow, Air Intake ... ..	A220S/W	1	} Air Intake Elbow and Blanking Plate
9/15/40208	Z12/30756	20	Washer, Thackray, $\frac{5}{16}$ " ... ..	All Models	3	
	Z4/30688		Washer, Thackray, $\frac{5}{16}$ " ... ..	"	3	
	A4/19492		<b>Joint</b> ... ..	"	2	

B.R. Cat. No.	A.E.C. Basic Part No.	Plate Ref.	Designation	Used on	No. Req. per Engine	Remarks
		<b>AI</b>	<b>ENGINE—Continued</b>	<b>All Models</b>		
9 15/40290	A56461	21	Tube, Air Connection ... ..	"	1	} Connection between Cylinder Heads
9 15/40215	A31016	22	<b>Joint Ring, Rubber</b> ... ..	"	1	
	332-128	23	Clip, Jubilee, No. 4 ... ..	"	1	
9 15/40230	A3/25731	24	Pipe, Water Connection ... ..	"	1	} Front to Rear Cylinder Heads
9 15/40217	A4/19410	32	<b>Joint</b> ... ..	"	2	
9 15/40281	Z15/30720	25	Setscrew, $\frac{5}{16}$ " B.S.F. $\times 2\frac{7}{8}$ " ... ..	"	4	
9 15/40277	Z13/30740	26	Setscrew, $\frac{5}{16}$ " B.S.F. $\times 1\frac{1}{2}$ " ... ..	"	4	} Front Cylinder Head
9 15/40310	138-129	27	Washer, Copper, $\frac{3}{4}$ " $\times 15$ m/m. $\times \frac{3}{32}$ ", Special ...	"	8	
9 15/40231	A3/25732	28	Pipe, Water Outlet ... ..	"	1	
9 15/40217	A4/19410	32	<b>Joint</b> ... ..	"	1	} Front Cylinder Head
9 15/40277	Z13/30740	29	Setscrew, $\frac{5}{16}$ " B.S.F. $\times 1\frac{1}{2}$ " ... ..	"	2	
9 15/40281	Z15/30720	30	Setscrew, $\frac{5}{16}$ " B.S.F. $\times 2\frac{7}{8}$ " ... ..	"	2	
9 15/40310	138-129	31	Washer, Copper, $\frac{3}{4}$ " $\times 15$ m/m. $\times \frac{3}{32}$ ", Special ...	"	4	} Cylinder Heads to Engine Casing
9 15/40211	A70753	33	<b>Gasket</b> ... ..	"	2	
	85-156	34	Nut, Plain, $\frac{1}{2}$ " B.S.F. ... ..	"	36	
9 15/40295	Z6/30685	35	Washer, Special, 13 S.W.G., Pressing ... ..	"	36	} Cylinder Head Studs
9 15/40292	Z8/44864		Tube, 3-145" ... ..	"	8	
9 15/40192	Z8/44865		Tube, 2- $\frac{9}{16}$ " ... ..	"	4	
9 15/40294	Z8/44866		Tube, 2- $\frac{3}{8}$ " ... ..	"	16	} Used only when Flashing Cylinder Block Face
9 15/40307	A62521		Shim, 0-005" ... ..	"	} As req.	
9 15/40308	A62522		Shim, 0-010" ... ..	"		
9 15/40309	A62523		Shim, 0-020" ... ..	"		
9 15/40224	A1/27257	36	Exhaust Manifold, Front ... ..	"	1	} Exhaust Manifold to Cylinder Head
9 15/40225	A1/27258	37	Exhaust Manifold, Rear ... ..	"	1	
9 15/40214	A3/19495	38	<b>Joint</b> ... ..	"	4	
9 15/40311	85-65	39	Nut, Plain, $\frac{7}{16}$ " B.S.F., "Rustless", Special ... ..	"	8	
9 15/40312	AA4681		<b>CYLINDER HEAD COVER COMPLETE</b> ... ..	"	1	Front
9 15/40313	AA4663		<b>CYLINDER HEAD COVER COMPLETE</b> ... ..	"	1	Rear
9 15/40147	A72578	40	Cover, Valve, Front ... ..	"	1	} Front
9 15/40155	A72577	41	Cover, Valve, Rear ... ..	"	1	
9 15/40149	F19714	42	Monogram, B.U.T. ... ..	"	1	
9 15/40150	Z1/43705	43	Screw, Special ... ..	"	3	} Rear
9 15/40151	255-46	44	Washer, Lead, 5 $\times 10 \times 1$ m/m., Special ...	"	3	
9 15/40157	341-1428	45	Plate, Instruction ... ..	"	1	
9 15/40150	Z1/43705	46	Screw, Special ... ..	"	5	} Valve Covers to Cylinder Head
9 15/40212	A72632	47	<b>Joint</b> ... ..	"	2	
9 15/35389	Z15/30718	48	Setscrew, $\frac{5}{16}$ " B.S.F. $\times 3\frac{3}{8}$ " ... ..	"	6	
9 15/40280	Z15/30719	49	Setscrew, $\frac{5}{16}$ " B.S.F. $\times 3\frac{3}{8}$ " ... ..	"	14	} Valve Covers to Cylinder Head
9 15/40305	138-151	50	Washer, Copper, $\frac{3}{4}$ " $\times 15 \times 1$ m/m., Special ...	"	20	

B.R. Cat. No.	A.E.C. Basic Part No.	Plate Ref.	Designation	Used on	No. Req. per Engine	Remarks	
		<b>A2</b>	<b>ENGINE—Continued</b>				
9/15/40247	AA2734	11	<b>VALVE ROCKER SHAFT COMPLETE ...</b>	All Models	2		
9/15/40261	AA2735	12	<b>VALVE ROCKER SHAFT WITH GRUB SCREW</b>	"	2		
9/15/40314	A75525		Shaft, Valve Rocker ...	"	2		
9/15/40315	119-109		Screw, Grub, $\frac{1}{2}$ " B.S.F. $\times \frac{1}{2}$ "	"	4		
9/15/40248	A75630	13	Bracket ...	"	6		
9/15/40264	A75705	14	Spring ...	"	4		
9/15/40266	Z2/30671	15	Washer, Special, 18 S.W.G.	" As req.	}		
9/15/40265	Z3/30692		Washer, Special, 14 S.W.G.				
9/15/40267	Z3/30693		Washer, Special, 24 S.W.G.				
	99-5	16	Circlip, Seeger, $\frac{3}{8}$ " G.P. Dia.	"	4		
9/15/40250	AA2813		<b>VALVE ROCKER COMPLETE</b>	"	12		
9/15/40253	AA4815		<b>VALVE ROCKER WITH BALL AND BUSH</b>	"	12		
9/15/40316	AA2816	17	<b>VALVE ROCKER WITH BALL</b>	"	12	Not Supplied as Spares	
	A75414		Rocker, Valve ...	"	12		
9/15/40255	Z11023		Bush ...	"	12		
9/15/40260	A75905	18	Screw, Adjusting...	"	12		
9/15/40252	Z1/32033	19	Locknut, Special, $\frac{1}{8}$ " Gas.	"	12		
	85-34	20	Nut, Plain, $\frac{3}{8}$ " B.S.F.	"	6	Valve Rocker Valve Rocker Shaft to Cylinder Head	
	85-35	21	Nut, Plain, $\frac{7}{16}$ " B.S.F.	"	6		
9/15/40270	A16416	22	Tappet Valve ...	"	12		
9/15/40271	A16505	23	Thimble, Valve ...	"	12		
9/15/40240	AA4422	24	<b>PUSH ROD COMPLETE</b>	"	12		
9/15/35493	A15340	50	Camshaft ...	"	1	} Cam-shaft To mesh with A15466	
9/15/35481	A16138	51	Bearing, Front ...	"	1		
9/15/35482	A16247	52	Bearing, Intermediate, Centre and Rear ...	"	6		
9/15/35588	A16314	53	Screw Dowel ...	"	6		
9/15/35589	A16313	54	Screw Dowel, Hollow ...	"	1		
9/15/40305	138-151	55	Washer, Copper, $\frac{25}{64}$ " $\times 15 \times 1$ m/m., Special ...	"	7		
9/15/35602	A1/15408	56	Gear Wheel ...	"	1		
9/15/35491	Z15/30707	57	Setscrew, Special, $\frac{3}{8}$ " B.S.F. $\times 2\frac{1}{16}$ "	"	4		
9/15/35600	Z1/44776	58	Tabwasher, Special, $\frac{25}{64}$ " Dia...	"	4		
9/15/35601	A15465	59	Bevel, Spiral, Driving ...	"	1		
9/15/35369	156-79	60	Key, Special, $\frac{1}{4}$ " $\times 187$ " $\times \frac{5}{8}$ "	"	1		
9/15/35567	Z3/32016	61	Nut, Special, $\frac{3}{8}$ " B.S.F.	"	1		
	100-18	62	Split Pin, $\frac{3}{32}$ " $\times 1\frac{3}{4}$ "	"	1		
9/15/35543	AA6320		<b>IDLER GEAR COMPLETE</b>	"	1		
9/15/35544	A15498		Gear Wheel...	"	1		
9/15/35552	Z1/10126	29	Bush ...	"	2		
9/15/35592	A80932	39	Spindle ...	"	1	} Idler Gear	
9/15/35582	103-93	40	Plug, $\frac{3}{8}$ " B.S.F.	"	1		
9/15/35563	A3/19440	41	Joint ...	"	1	} Idler Gear Spindle	
9/15/35590	Z1/46571	42	Shim, 0-036"	" As req.	}		
9/15/35591	Z1/46572		Shim, 0-018"				
9/15/35583	Z3/43722	44	Setscrew, Special, $\frac{5}{16}$ " B.S.F. $\times \frac{3}{4}$ "	"	3		
	219-21	43	Wire, Locking, Iron, 16 S.W.G.	"	10"		
9/15/35603	A15477	45	<b>Gear Wheel</b> ...	"	1	} Oil Pump Idler Wheel	
9/15/35593	A80941	46	Spindle ...	"	1		
9/15/35492	Z11024	47	Bush ...	"	2		
9/15/34200	Z31992	48	Nut, Special, $\frac{3}{8}$ " B.S.F., Slotted	"	1		
	100-16	49	Split Pin, $\frac{1}{8}$ " $\times 1\frac{3}{8}$ "	"	1		

**NOTE:—Part Numbers A15340 to 100-16 also form part of Complete Crankcase AA6937, Page A.6**



B.R. Cat. No.	A.E.C. Basic Part No.	Plate Ref.	Designation	Used on	No. req. per Engine	Remarks
		<b>A2</b>	<b>ENGINE</b> —Continued ... ..	All Models		
9 15 35350	AB2701		<b>BEVEL DRIVE CASING COMPLETE</b> ...	A220L	1	
9 15 35352	AB2706		<b>BEVEL DRIVE CASING COMPLETE</b> ...	Not A220L	1	
9 15 35684	AB2703		<b>BEVEL DRIVE CASING WITH STUDS</b> ...	AB2701	1	
9 15 35356	AB2707		<b>BEVEL DRIVE CASING WITH STUDS</b> ...	AB2706	1	
	A33115	} 63	Casing ... ..	AB2703	1	} Not Supplied as Spares
	A33124		Casing ... ..	AB2707	1	
9 15 35357	Z1/44003	64	Dowel ... ..	All Models	1	
9 15 35358	Z7/30521	65	Stud, Special, $\frac{1}{4}$ " B.S.F. $\times$ $1\frac{1}{8}$ " ...	"	4	Housing
9 15 35359	Z7/30522	} 66	Stud, Special, $\frac{1}{2}$ " B.S.F. $\times$ $1\frac{3}{8}$ " ...	AB2703	6	Cover
9 15 58209	124-1126		Stud, $\frac{5}{16}$ " B.S.F. $\times$ $1\frac{1}{2}$ " ...	Not AB2703	3	Generator
9 15 35365	A2/75197	67	Housing, Bush and Seal ... ..	All Models	1	
9 15 35377	Z2/46571	} 68	Shim, 0-002" ... ..	"	} As req.	} Housing to Casing
9 15 35378	Z2/46572		Shim, 0-003" ... ..	"		
9 15 35379	Z2/46573		Shim, 0-015" ... ..	"		
9 15 35368	A4/19411	69	Joint... ..	"		
9 15 35373	Z2/32049	70	Nut, $\frac{1}{4}$ " B.S.F., Lock ... ..	"	4	
	Z3/30616	71	Washer, Grover, $\frac{1}{2}$ " ... ..	"	4	
9 15 35354	Z1/10141	72	Bush ... ..	"	1	
9 15 35374	Z1/44565	73	Plug, End ... ..	"	1	Bevel Casing
9 15 35382	138-144	74	Washer, Copper, 27 $\times$ 34 $\times$ 2.5 m/m., Special ...	"	1	
9 15 35388	A15466	75	<b>Bevel, Spiral, Driven</b> ... ..	"	1	To Mesh with A15465
9 15 35369	156-79	76	Key, Special, $\frac{1}{4}$ " $\times$ 187" $\times$ $\frac{3}{8}$ " ... ..	"	1	
9 15 35371	Z2/31927	77	Nut, Special, $\frac{7}{8}$ ", 16 T.P.I. ... ..	"	1	
9 15 35386	Z1/44703	78	Tabwasher, Special, 22.5 m/m. Dia. ... ..	"	1	
9 15 35381	A76988	79	Spindle ... ..	"	1	
9 15 35380	A64001	80	Sleeve ... ..	"	1	Spiral Bevel Wheel
9 15 35369	156-79	81	Key, Special, $\frac{1}{4}$ " $\times$ 187" $\times$ $\frac{3}{8}$ " ... ..	"	1	
	35372 Z1/31960	82	Nut, Plain, $\frac{5}{8}$ " B.S.F. ... ..	"	1	
9 15 35387	Z1/44736	83	Tabwasher, Special, $\frac{31}{32}$ " Dia. ... ..	"	1	
9 15 35376	5091-3	84	<b>Oil Seal, "Gaco", No. MIS.114</b> ... ..	"	1	
9 15 35353	131-107	85	Adaptor, Special ... ..	"	1	Oil Pipe Adaptor—
9 15 35383	138-156	86	Washer, Copper, $\frac{17}{32}$ " $\times$ $\frac{3}{4}$ " $\times$ $\frac{1}{16}$ ", Special ...	"	1	Bevel Casing
9 15 35363	A2/75162	87	Cover ... ..	AB2701	1	
9 15 35366	A3/19494	88	Joint... ..	"	1	Bevel Drive
	Z2/32045	89	Nut, Plain, $\frac{1}{4}$ " B.S.F. ... ..	"	2	Housing Cover
	Z4/30690	90	Washer, Special ... ..	"	2	
9 15 35364	A3/75130	87	Cover ... ..	AB2706	1	
9 15 35367	A4/19477	88	Joint... ..	"	1	Bevel Drive
9 15 35681	Z13/30782		Setscrew, 2 B.A. $\times$ $\frac{1}{2}$ " ... ..	"	4	Housing Cover
	Z4/30698	90	Washer, Grover, 2 B.A. ... ..	"	4	
9 15 35360	A1/4728	91/92	<b>COUPLING COMPLETE</b> ... ..	All Models	1	
9 15 35682	Z43334	93	Rivet, Special ... ..	"	6	Fuel Pump
9 15 35391	A23032	94	Coupling, Centre, Rubber ... ..	"	1	Drive
9 15 35392	A1/22892	95	Coupling, Internal Half ... ..	"	1	
9 15 35399	Z2/46574	} 96	Shim, 0-002" ... ..	"	} As req.	} Bevel Drive
9 15 35400	Z2/46575		Shim, 0-003" ... ..	"		
9 15 35401	Z2/46576		Shim, 0-015" ... ..	"		
9 15 35393	A4/19412	97	Joint ... ..	"		Casing to Engine
9 15 35389	Z18/30718	} 98	Bolt, Special, $\frac{1}{2}$ " B.S.F. $\times$ $4\frac{3}{8}$ " ... ..	A220L	2	Casing. For Studs
9 15 35389	Z18/30718		Bolt, Special, $\frac{1}{2}$ " B.S.F. $\times$ $4\frac{3}{8}$ " ... ..	Not A220L	1	See Page A6
9 15 35390	Z18/30714		Bolt, Special, $\frac{5}{16}$ " B.S.F. $\times$ $4\frac{1}{4}$ " ... ..	"	1	
	Z2/32047	99	Nut, Plain, $\frac{5}{16}$ " B.S.F. ... ..	All Models	6	
	Z4/30688	100	Washer, Thackray, $\frac{5}{16}$ " ... ..	"	8	
9 15 35395	A7/2203	101	<b>OIL PIPE COMPLETE</b> ... ..	"	1	Front Camshaft Bearing to Bevel Drive Casing

B.R. Cat. No.	A.E.C. Basic Part No.	Plate Ref.	Designation	Used on	No. Req. per Engine	Remarks
		<b>A3</b>	<b>ENGINE—Continued</b>	<b>All Models</b>		
9/15/35695	AA6937		<b>CRANKCASE AND CYLINDER BLOCK MONO TYPE COMPLETE</b> ... ..		1	
<del>9/15/35696</del>	A9185		<b>CRANKCASE WITH BEARING CAPS, LINERS AND STUDS</b> ... ..	9/15/35695	1	
9/15/35497	A9175		<b>CRANKCASE WITH BEARING CAPS AND LINERS</b> ... ..		1	
	A1/17174	1	Crankcase, Bare ... ..		1	Not supplied as Spares
9/15/35512	Z1/44564	2	Core Plug, Special, 48 m/m. Dia., 16 T.P.I....		4	
9/15/35687	138-223	3	Washer, Copper, 48×60×3 m/m., Special...		4	
9/15/35513	Z1/44555	4	Core Plug, Special, 1½" Dia., 16 T.P.I. ...		11	
9/15/35688	138-211	5	Washer, Copper, 32×40×2 m/m., Special...		11	
9/15/35689	103-211		Core Plug, Special, 1½" Dia., 16 T.P.I. ...		4	
9/15/35506	A1/57172	6	<b>Liner</b> ... ..		6	
9/15/35509	A2/75171	7	Plate, Cover ... ..		1	
9/15/35504	A4/19407	9	<b>Joint</b> ... ..		1	
9/15/35517	Z7/30505	8	Stud, Special, ⅝" B.S.F. × 7⅞" ... ..		5	Water Jacket—Front
9/15/35508	Z2/32006	10	Nut, ⅝" B.S.F., Lock ... ..		5	
	Z4/30692	11	Washer, Grover, ⅝" ... ..		5	
9/15/35690	A1/14418A	12	Cap, Bearing, Front ... ..		1	
9/15/35691	A1/14432A	13	Cap, Bearing, Intermediate ... ..		4	
9/15/35692	A1/14431A	14	Cap, Bearing, Centre ... ..		1	
9/15/35693	A1/14433A	15	Cap, Bearing, Rear ... ..		1	
9/15/35503	Z1/44062	16	Dowel ... ..		14	Bearing Cap
9/15/35515	Z3/43778	17	Setscrew, Special, 1⅛" B.S.F. × 9"		2	Bearing Cap Fixing
9/15/35514	Z3/43777	18	Setscrew, Special, 1⅛" B.S.F. × 7⅞"		14	
	Z19-25	19	Wire, Locking, Iron, 16 S.W.G. ... ..		As req.	
9/15/35510	A2/75172	20	Plate, Cover ... ..		1	
9/15/35505	A4/19409	21	<b>Joint</b> ... ..		1	Water Jacket
9/15/35516	Z43797	22	Setscrew, Special, ⅝" B.S.F. × 21 m/m. ...		6	
9/15/40305	138-151	23	Washer, Copper, 2¼" × 15 × 1 m/m., Special		6	
9/15/35531	Z8/30530	24	Stud, Special, ½" B.S.F. × 6⅞"		12	
9/15/35532	Z8/30531	25	Stud, Special, ½" B.S.F. × 5⅞"		28	
9/15/35527	Z8/30533	24	Stud, Special, ½" B.S.F. × 6⅞"	9/15/35539		Alternative to Z8/30530 Alternative to Z8/30531 Engine Front Support
9/15/35694	Z8/30534	25	Stud, Special, ½" B.S.F. × 5⅞"	Oversize	As req.	
9/15/35518	Z7/30520	26	Stud, Special, ½" B.S.F. × 1⅞"		4	
9/15/35526	Z7/30532	27	Stud, Special, ½" B.S.F. × 2⅞"		1	Rear Support Bracket
9/15/35527	Z7/30533	28	Stud, Special, ½" B.S.F. × 3⅞"		1	
9/15/35528	Z7/30527	29	Stud, Special, ½" B.S.F. × 2⅞"		2	
9/15/35529	Z7/30528	30	Stud, Special, ½" B.S.F. × 3⅞"		1	
9/15/35534	Z5/30590	31	Stud, Special, ⅜" B.S.F. × 1⅞"		3	Water Jacket Cover Plate—Rear
9/15/35536	Z7/30560		Stud, Special, ⅜" B.S.F. × 1⅞"		1	
9/15/35537	Z7/30561		Stud, Special, ⅜" B.S.F. × 3⅞"		1	
9/15/35520	Z7/30517	32	Stud, Special, ½" B.S.F. × 2¼"		1	Ring Dowel, Short
9/15/35521	Z6/30516	33	Stud, Special, ½" B.S.F. × 2"		1	Short
9/15/35522	Z7/30518	34	Stud, Special, ½" B.S.F. × 3⅞"		1	Ring Dowel, Long
						Long
9/15/35523	Z7/30519	35	Stud, Special, ½" B.S.F. × 3⅞"		1	Fuel Pump Bracket
9/15/35524	Z7/30503	36	Stud, Special, ⅝" B.S.F. × 2½"		1	
9/15/35530	Z6/30521	37	Stud, Special, ⅝" B.S.F. × 1⅞"		4	
9/15/35524	Z7/30503	38	Stud, Special, ⅝" B.S.F. × 2½"		2	Bevel Drive Case
9/15/35534	Z5/30590	39	Stud, Special, ⅜" B.S.F. × 1⅞"		6	

B.R. Cat. No.	A.E.C. Basic Part No.	Plate Ref.	Designation	Used on	No. Req. per Engine	Remarks
		<b>A3</b>	<b>ENGINE—Continued</b>	<b>All Models</b>		
			<b>CRANKCASE AND CYLINDER BLOCK</b>			
			<b>MONO TYPE—Continued</b>			
9 15/35486	A3/13701	40	Bearing, Main, Front ... ..	"	1	} Top Half
9 15/35488	A3/13702	41	Bearing, Main, Intermediate ... ..	"	4	
9 15/35484	A1/14295 X	42	Bearing, Main, Centre ... ..	"	1	
9 15/35490	A1/14746	43	Bearing, Main, Rear ... ..	"	1	} Bottom Half
9 15/35485	A2/13798	44	Bearing, Main, Front ... ..	"	1	
9 15/35487	A3/13700	45	Bearing, Main, Intermediate ... ..	"	4	
9 15/35483	A1/14296 X	46	Bearing, Main, Centre ... ..	"	1	} Main Bearing
9 15/35489	A1/14745	47	Bearing, Main, Rear ... ..	"	1	
9 15/35540	Z44093	} 48	Dowel (Bearing Shells) ... ..	"	14	
9 15/35357	Z1/44003		Dowel (Bearing Caps) ... ..	"	7	
9 15/35509	A2/75171	49	Plate, Cover... ..	"	1	} Camshaft Cover—Rear
9 15/35504	A4/19407	50	Joint... ..	"	1	
9 15/35516	Z43797	53	Setscrew, Special, $\frac{5}{16}$ " B.S.F. x 21 m/m. ...	"	5	
9 15/40305	138-151	54	Washer, Copper, $\frac{21}{64}$ " x 15 x 1 m/m., Special ...	"	5	} Water Jacket
9 15/35510	A2/75172	55	Plate, Cover... ..	"	1	
9 15/35505	A4/19409	56	Joint... ..	"	1	
9 15/35516	Z43797	57	Setscrew, Special, $\frac{5}{16}$ " B.S.F. x 21 m/m. ...	"	6	} Cover Plate and Timing Pointer
9 15/40305	138-151	58	Washer, Copper, $\frac{21}{64}$ " x 15 x 1 m/m., Special ...	"	6	
9 15/35587	Z6/30588		Stud, Special, $\frac{5}{16}$ " B.S.F. x 41 m/m. ...	"	2	
9 15/35579	A2/75161	59	Plate, Cover... ..	"	1	} Water Jacket, Rear
9 15/35562	A4/19406	60	Joint... ..	"	1	
	Z32034	61	Nut, Plain, $\frac{3}{8}$ " B.S.F. ... ..	"	5	} Cover Plate to Engine Casing
	Z4/30696	62	Washer, Grover, $\frac{3}{8}$ " ... ..	"	5	
9 15/34213	Z1/44079		Dowel, Special, $\frac{3}{8}$ " Dia. ... ..	"	2	} Cover Plate Torque Reaction
9 15/35576	A2/75173	63	Plate, Buffer... ..	"	1	
9 15/35559	A4/19419	64	Joint... ..	"	1	} Buffer Plate to Engine Casing
	Z32034	65	Nut, Plain, $\frac{3}{8}$ " B.S.F. ... ..	"	6	
	Z4/30696	66	Washer, Grover, $\frac{3}{8}$ " ... ..	"	6	
9 15/35699	A2/75188		Plate, Blanking ... ..	"	1	} Engine Casing, Rear
9 15/35558	A4/19427		Joint... ..	"	1	
9 15/35586	Z1/30779		Setscrew, $\frac{5}{16}$ " B.S.F. x $\frac{3}{4}$ " ... ..	"	2	} Blanking Plate to Engine Casing
	Z4/30692		Washer, Grover, $\frac{5}{16}$ " ... ..	"	2	
9 15/35574	A7/2202	67	<b>OIL FEED PIPE COMPLETE</b> ... ..	"	1	} Valve Rocker Shaft
9 15/35571	G25250	68	Pin, Banjo ... ..	"	3	
9 15/34230	A74603	69	Washer, Copper, Special, 21 x 2 x 14.5 m/m. ...	"	3	} Oil Feed Pipe
9 15/35698	138-139	70	Washer, Copper, Special, 10 x 21 x 2 m/m. ...	"	3	
	219-21	71	Wire, Locking, Iron, 16 S.W.G. ... ..	"	3' 0"	
9 15/35538	Z4/31319	72	Clip ... ..	"	2	} Push Rod Chamber
9 15/35581	Z1/44568	73	Core Plug ... ..	"	1	
9 15/35688	138-211	74	Washer, Copper, Special, 32 x 40 x 2 m/m. ...	"	1	
	219-21	71	Wire, Locking, Iron, 16 S.W.G. ... ..	"	As req.	} Engine Casing Extension
9 15/35541	Z1/44078	75	Dowel, Special ... ..	"	1	
9 15/35542	A72907	76	Lifting Eye ... ..	"	1	
9 15/35697	138-158	77	Washer, Copper, Special, 21 x 29 m/m. x $\frac{3}{32}$ " ...	"	1	
90/16299	A2/14425		Bearing Rear top			} main bearings 1/2 m.m. oversize outside dia
90/16293	A2/14731		" " bot.			
90/16300	A3/14203		" Centre Top			
90/16298	A3/14211		" " bot.			
90/16291	A4/13777		" Inter Top			
90/16296	A4/13783		" " bot			
90/16295	A4/13465		" Front Top			
90/16294	A4/13441		" " bot.			

(A2738) X Centre Main Bearing now should have .002" increased clearance. New bearings Part No. Top Half A3/14244 Bottom " A3/14250



B.R. Cat. No.	A.E.C. Basic Part No.	Plate Ref.	Designation	Used on	No. Req. per Engine	Remarks
		<b>A3</b>	<b>ENGINE—Continued</b>	<b>All Models</b>		
9/15/35613	A2/75160	78	Cover, Push Rod ... ..	"	2	
9/15/35619	A3/19493	79	<b>Joint, Cover</b> ... ..	"	2	} Push Rod Cover to Engine Casing
9/15/35662	Z43741	80	Setscrew, Special, $\frac{5}{16}$ " B.S.F. $\times$ 24 m/m. ... ..	"	44	
9/15/35675	Z1/44740	81	Lockwasher, Special, $\frac{11}{32}$ " Dia. ... ..	"	44	
9/15/35615	A78402	82	Guide, Push Rod ... ..	"	2	
9/15/35663	Z2/43748	83	Setscrew, $\frac{5}{16}$ " B.S.F. $\times$ $\frac{3}{8}$ " ... ..	"	6	} Push Rod Guides
	134-3	84	Washer, Plain, $\frac{5}{16}$ " ... ..	"	6	
	219-21	85	Wire, Locking, Iron, 16 S.W.G. ... ..	"	As req.	
9/15/35668	A74845	86	<b>Rubbing Strip, Top and Bottom</b> ... ..	"	2	
9/15/35658	A11031	88	Pointer, Timing ... ..	"	1	
	85-33		Nut, Plain, $\frac{5}{16}$ " B.S.F. ... ..	"	2	
	135-33		Washer, Grover, $\frac{5}{16}$ " ... ..	"	2	
9/15/35611	A1/59311	89	Bracket, Front Support ... ..	"	1	
	Z2/32044	90	Nut, Plain, $\frac{1}{2}$ " B.S.F. ... ..	"	4	} Front Support to Engine Casing
	Z4/30695	91	Washer, Grover, $\frac{1}{2}$ " ... ..	"	4	
9/15/35622	A81930	92	Mounting, "Metalastik" No. 13/865 ... ..	"	1	
9/15/35606	A93403	} 93	Buffer Angle, $1\frac{2}{16}$ " ... ..	A220L/Y	1	} Torque Reaction
9/15/35705	A93402		Buffer Angle, 2" ... ..	A220S/W	1	
	121-144	94	Setscrew, $\frac{1}{2}$ " B.S.F. $\times$ 1" ... ..	All Models	2	} Buffer Angle to Buffer Plate
9/15/35707	136-34	95	Lockwasher, Special, $1\frac{17}{32}$ " ... ..	"	2	
9/15/35612	Y10273	96	Bracket, Front Support ... ..	"	1	
9/15/35670	Z5/30683	97	Washer, Special, Clamp ... ..	"	1	
9/15/35607	Z15/30713	98	Bolt, Special, $\frac{9}{16}$ " B.S.F. $\times$ $3\frac{1}{8}$ ", Drilled ... ..	"	1	} Front Support Bracket
	86-37	99	Nut, Slotted, $\frac{9}{16}$ " B.S.F. ... ..	"	1	
	100-14	100	Split Pin, $\frac{1}{8}$ " $\times$ $1\frac{1}{2}$ " ... ..	"	1	
9/15/35706	341-1730		Plate, Engine History ... ..	"	1	British Railways Issue DRG (Derby) DV186
	Z6/30798		Setscrew, No. 2 B.A. $\times$ $\frac{3}{8}$ " ... ..	"	2	} Engine History Plate
9/15/40151	255-46		Washer, Lead, $5 \times 10 \times 1$ m/m., Special ... ..	"	2	
	219-24		Wire, Locking, Iron, 18 S.W.G. ... ..	"	As req.	

railcar.co.uk

B.R. Cat. No.	A.E.C. Basic Part No.	Plate Ref.	Designation	Used on	No. Req. per Engine	Remarks
		<b>A4</b>	<b>ENGINE—Continued</b>	All Models		
15 30580	A1/7628		<b>CRANKSHAFT COMPLETE</b> ... ..	A220L/Y	1	
15 30575	A1/7634		<b>CRANKSHAFT COMPLETE</b> ... ..	A220S/W	1	
15 30585	A14964	1	<b>Crankshaft, Bare</b> ... ..	All Models	1	
15 30584	A74312	2	Cap, Crank Pin End ... ..	"	12	Crank Pin End Cap
15 30583	A74412	3	Bolt, Special, $\frac{3}{8}$ " B.S.F. $\times$ 95.5 m/m. ... ..	"	6	
	86-34	4	Nut, Slotted, $\frac{3}{8}$ " B.S.F. ... ..	"	6	
15 30600	A74602	5	Washer, Special, 15 m/m. $\times$ $\frac{3}{32}$ " $\times$ 10 m/m. ... ..	"	18	
	100-4	6	Split Pin, $\frac{1}{8}$ " $\times$ 1" ... ..	"	6	
15 30601	A56708	7	Washer, Locating, Front ... ..	"	1	
15 30593	A74719	8	<b>Pinion, Driving</b> ... ..	"	1	Driving Pinion
15 30590	Z1/43119	9	Key, Special ... ..	"	1	
15 30591	Z2/31950	10	Locknut, Special ... ..	"	1	
15 30602	Z1/44762	11	Lockwasher, Special ... ..	"	1	
15 30603	A56709	12	Washer, Locating, Rear ... ..	"	1	Locating Washer
15 30587	Z2/44021	13	Dowel, Special, $\frac{9}{32}$ " Dia. $\times$ $\frac{7}{8}$ " ... ..	"	1	
15 30595	A5742		<b>PULLEY COMPLETE</b> ... ..	A220L/Y	1	Crankshaft and Transmitter
15 30596	A21791	14	Pulley, Crankshaft ... ..	A220S/W	1	Crankshaft Pulley
15 30589	Z1/43108	15	Key, Special ... ..	All Models	1	
15 30598	Z1/43754	16	Setscrew, Special, $\frac{7}{8}$ " 16 T.P.I. ... ..	"	1	
15 30604	Z3/30602	17	Washer, Special ... ..	"	1	
15 30594	Z1/44739	18	Plate, Locking ... ..	"	1	Locking Plate to Pulley
15 30582	121-103	19	Setscrew, $\frac{1}{4}$ " B.S.F. $\times$ $\frac{9}{8}$ " ... ..	"	2	
	85-32	20	Nut, Plain, $\frac{1}{4}$ " B.S.F. ... ..	"	2	
	135-32		Washer, Grover, $\frac{1}{4}$ " ... ..	"	2	Flywheel
15 30586	Z44018	21	Dowel, Special ... ..	"	1	
15 30581	Z1/30716	22	Bolt, Special, $\frac{1}{2}$ " B.S.F. $\times$ 38 m/m. ... ..	"	6	Crankshaft Pulley
15 30588	A74962	23	Housing, Oil Seal ... ..	"	1	
15 30599	5091-32	24	<b>Oil Seal, 1<math>\frac{7}{8}</math>" <math>\times</math> 2<math>\frac{3}{8}</math>" <math>\times</math> <math>\frac{1}{2}</math>" Wide, Weston</b> ... ..	"	1	
15 30620	5092-45		<b>"O" Ring, Gaco, No. R180</b> ... ..	"	1	
15 38046	A5/5514		<b>PISTON COMPLETE</b> ... ..	"	6	Piston
15 38050	A6/11538	25	<b>Piston, Bare, Wellworthy</b> ... ..	"	6	
15 38051	A4/11656	26	<b>Ring Compression, Top Groove</b> ... ..	"	6	
15 38052	A4/11641	27	<b>Ring, Compression</b> ... ..	"	12	
15 38053	A4/11640	28	<b>Ring, Scraper</b> ... ..	"	12	
15 38048	A1/11705	29	Pin, Gudgeon ... ..	"	6	
	99-217	30	Circlip, Seeger, 45 m/m. G.P. Dia. ... ..	"	12	Not Supplied as Spares
15 38032	A2/5609S		<b>CONNECTING ROD COMPLETE</b> ... ..	"	6	
	A11954	31	Connecting Rod, Bare ... ..	"	6	
	A12050	32	Cap, Connecting Rod, Bare ... ..	"	6	
15 38061	A44425	34	<b>Bush, Small End</b> ... ..	"	6	
15 59240	A12322	36	Bolt, Special ... ..	"	12	
15 38041	A45606	37	Nut, Special, Slotted, $\frac{1}{2}$ " B.S.F. Part A.54606	"	12	
15 38033	A1/12106	33	<b>Bearing</b> ... ..	"	6 prs.	
15 38062	Z2/44002	35	Dowel ... ..	"	12	
15 38042	Z1/47007	38	Split Pin, Special ... ..	"	12	

B.R. Cat. No.	A.E.C. Basic Part No.	Plate Ref.	Designation	Used on	No. Req. per Engine	Remarks
		<b>A5</b>	<b>ENGINE—Continued</b>	All Models		
9/15/35422	AB3015		<b>ENGINE EXTENSION CASING COMPLETE</b> ... ..	A220L/Y	1	
9/15/35423	AB3022		<b>ENGINE EXTENSION CASING COMPLETE</b> ... ..	A220S/W	1	
9/15/35424	AB3014		<b>ENGINE EXTENSION CASING WITH INSERTS</b> ... ..	All Models	1	
	A62607	1	Extension Casing, Bare ... ..	"	1	Not Supplied as Spares
9/15/35709	Z1/44035		Dowel, Special, 0-373" × $\frac{5}{64}$ "	"	3	
9/15/35430	Z7/30509	2	Stud, Special, $\frac{1}{2}$ " B.S.F. × $2\frac{1}{4}$ "	AB3015	1	} Belt Tensioner Bracket
9/15/35431	Z7/30580	3	Stud, Special, $\frac{1}{2}$ " B.S.F. × $2\frac{1}{2}$ "	"	1	
9/15/35432	Z7/30562	4	Stud, Special, $\frac{1}{2}$ " B.S.F. × $3\frac{1}{8}$ "	"	1	
9/15/35437	Z7/30529	5	Stud, Special, $\frac{3}{8}$ " B.S.F. × $2\frac{1}{2}$ "	All Models	2	Rear Engine Case
9/15/35438	Z6/30591	6	Stud, Special, $\frac{3}{8}$ " B.S.F. × $1\frac{7}{8}$ "	"	4	Oil Filler Pipe
9/15/35435	Z6/30574	7	Stud, Special, $\frac{3}{8}$ " B.S.F. × $1\frac{5}{8}$ "	"	36	} Crankcase Bottom
9/15/35436	Z6/30503	8	Stud, Special, $\frac{3}{8}$ " B.S.F. × $3"$	"	2	
9/15/35434	Z7/30506	9	Stud, Special, $\frac{5}{8}$ " B.S.F. × $2\frac{1}{8}$ "	"	2	Oil Release Valve
9/15/35439	Z6/30520	10	Stud, Special, $\frac{5}{8}$ " B.S.F. × $2"$	"	1	Oil Filter
9/15/35440	Z5/30599	11	Stud, Special, $\frac{5}{8}$ " B.S.F. × $1\frac{1}{2}$ "	"	2	Connection
9/15/35433	125-122	12	Stud, $\frac{5}{8}$ " B.S.F. × $1\frac{3}{8}$ ", Special	"	2	Breather Pipe
9/15/33081	Z44564	13	Plug, Drain ... ..	"	1	
9/15/33083	138-16	14	Washer, C. & A., 34 × 44 × 3 m/m., Special	"	1	
	219-21	15	Wire, Locking, Iron, 16 S.W.G. ... ..	"	12"	
9/15/35710	103-202		Plug, Drain, Flush ... ..	"	1	
9/15/35711	138-172		Washer, Copper, 21 × 27 × 2 m/m. ... ..	"	1	
9/15/35448	A3/19492	16	<b>Joint</b> ... ..	"	1	Extension Casing
	Z32034	17	Nut, Plain, $\frac{3}{8}$ " B.S.F. ... ..	"	2	} Rear End
	Z4/30696	18	Washer, Grover, $\frac{3}{8}$ " ... ..	"	2	
9/15/58200	Z18/30730	19	Bolt, Special, $\frac{3}{8}$ " B.S.F. × $1\frac{5}{8}$ " Long, Drilled ... ..	"	12	Engine Casing
9/15/35455	Z43778	20	Setscrew, Special, $\frac{3}{8}$ " B.S.F. × $1"$ ... ..	"	1	and Internal
9/15/30600	A74602	22	Washer, Copper, Special, 15 m/m. × $\frac{3}{32}$ " × 10 m/m. ... ..	"	15	Oil Grids
9/15/35411	Z1/30756	24	Bolt, Special, $\frac{3}{8}$ " B.S.F. × $1\frac{3}{8}$ "	"	12	} Extension Casing to Engine Casing
9/15/35412	Z12/30728	25	Bolt, Special, $\frac{3}{8}$ " B.S.F. × $1\frac{5}{8}$ "	"	1	
	Z32034	26	Nut, Plain, $\frac{3}{8}$ " B.S.F. ... ..	"	12	
	Z4/30686	27	Washer, Thackray, $\frac{3}{8}$ " ... ..	"	12	
9/15/35456	Z14/30793	28	Setscrew, $\frac{3}{8}$ " B.S.F. × $3\frac{3}{8}$ "	"	1	} Front End
9/15/35457	Z2/30750	29	Setscrew, $\frac{3}{8}$ " B.S.F. × $2\frac{1}{2}$ "	"	1	
9/15/35458	Z4/30728	30	Setscrew, $\frac{3}{8}$ " B.S.F. × $1\frac{3}{4}$ "	"	1	
9/15/35459	Z11/30783	31	Setscrew, $\frac{3}{8}$ " B.S.F. × $1"$ ... ..	A220L/Y	3	2 Front, 1 Rear
9/15/35413	Z12/30764		Setscrew, $\frac{3}{8}$ " B.S.F. × $1\frac{1}{2}$ "	"	3	Picks up Transmitter Bracket
						5 Front, 1 Rear
9/15/35459	Z11/30783		Setscrew, $\frac{3}{8}$ " B.S.F. × $1"$ ... ..	A220S/W	6	
9/15/35460	Z15/30721	32	Setscrew, $\frac{3}{8}$ " B.S.F. × $9\frac{1}{4}$ "	All Models	1	
	Z4/30686	33	Washer, Thackray, $\frac{3}{8}$ " ... ..	"	10	
	219-21	34	Wire, Locking, Iron, 16 S.W.G. ... ..	"	4' 2"	
9/15/35445	A78691	35	Oil Grid, Internal, Front ... ..	"	1	} Extension Casing
9/15/35446	A78692	36	Oil Grid, Internal, Rear ... ..	"	1	
9/15/35462	AB3406	37	<b>SUPPORT STRIP COMPLETE, FRONT</b> ... ..	"	1	} Internal Oil Grid
9/15/35465	AB3407	38	<b>SUPPORT STRIP COMPLETE, REAR</b> ... ..	"	1	
9/15/35414	A7/2245	39	<b>BREATHER PIPE COMPLETE</b> ... ..	"	1	
9/15/35449	251-11	41	<b>Joint</b> ... ..	"	1	} Extension Casing
	90-164	42	Locknut, $\frac{5}{16}$ " B.S.F., "Simmonds" Nyloc ... ..	"	2	
			NP-F106 ... ..	"	2	

B.R. Cat. No.	A.E.C. Basic Part No.	Plate Ref.	Designation	Used on	No. Req. per Engine	Remarks	
		<b>A5</b>	<b>ENGINE—Continued</b>	All Models			
9/15/33065	A2/2936		<b>CRANKCASE BOTTOM HALF COMPLETE</b>	A220L/Y	1		
9/15/35713	A2/2938		<b>CRANKCASE BOTTOM HALF COMPLETE</b>	A220S/W	1		
9/15/33089	A2/2937		<b>CRANKCASE BOTTOM HALF WITH STARTER CAP</b>	A2/2936	1		
9/15/33091	A2/2948		<b>CRANKCASE BOTTOM HALF WITH STARTER CAP</b>	A2/2938	1		
9/15/33071	A1/17253	44	Crankcase, Bare ... (A2/2921) ...	All Models	1	Not Supplied as Spares	
9/15/33092	V18423	45	Cap, Starter ...	A2/2937	1		
9/15/33093	V18424		Cap, Starter ...	A2/2948	1		
9/15/33095	Z7/30513	46	Stud, Special, 1/2" B.S.F. x 4 1/2"	All Models	2	} Starter Cap	
	Z2/32044	47	Nut, Plain, 1/2" B.S.F.	"	2		
	Z5/30609	48	Washer, Thackray, 1/2"	"	2		
9/15/33077	AA2535		<b>COVER PLATE COMPLETE</b>	"	1	} Cover Plate	
9/15/33080	A73237	49	Plate ...	"	1		
9/15/33081	Z44564	50	Plug, Drain ...	"	1		
9/15/33078	Z50015	51	Adaptor, Drain Plug ...	"	1		
9/15/33083	138-16	52	Washer, C. & A., 34 x 44 x 3 m/m., Special ...	"	1		
9/15/33079	219-47	53	Dowel Steel, 5/32" Dia. ...	"	1		
9/15/35712	125-198	54	Stud, 7/8" B.S.F. x 3 3/8", Special	} Alternatives ...	3		} Undrilled } Drilled
9/15/33082	Z7/30525		Stud, 7/8" B.S.F. x 3 1/2", Special				
	100-14	55	Split Pin, 1/8" x 1 1/2"	"	3		
9/15/33084	Z44505	56	Plug, Core ...	"	2		
9/15/33074	A73313	57	<b>Joint Cover Plate</b> ...	"	1		
9/15/33085	Z5/30594	58	Stud, Special, 5/16" B.S.F. x 1 5/8"	"	15	} Cover Plate to } Bottom Half	
	Z2/32047	59	Nut, Plain, 5/16" B.S.F.	"	15		
	Z4/30688	60	Washer, Thackray, 5/16"	"	15		
9/15/33086	Z5/30509		Stud, Special, 5/16" B.S.F. x 1 3/16"	"	1	} Air Compressor } Crankcase to Extension	
	Z1/32063		Nut, Slotted, 5/16" B.S.F.	"	1		
9/15/34251	Z8/30546		Stud, Special, 3/8" & 1/2" B.S.F. ends x 2"	"	1		
9/15/33073	Z1/44080	61	Dowel ...	"	2		
9/15/33100	AA2440	62	<b>GAUZE BOX COMPLETE</b> ...	"	1		
9/15/33120	AA8335	63	<b>GAUZE BOX COVER COMPLETE</b> ...	"	1		
9/15/33098	Z2/43712	64	Bolt, Special, 1/4" B.S.F. x 1/2", Drilled	"	4	} Gauze Box Cover } to Gauze Box	
	86-32	65	Nut, Slotted, 1/4" B.S.F.	"	4		
	134-2	66	Washer, Plain, 1/4"	"	4		
	100-4	67	Split Pin, 1/8" x 1"	"	4		
9/15/33099	Z7/30769	68	Bolt, Special, 5/16" B.S.F. x 1 1/4", Drilled	"	2	} Gauze Box to } Cover Plate	
	86-33	69	Nut, Slotted, 5/16" B.S.F.	"	2		
	138-151	70	Washer, Copper, 3/4" x 15 x 1 m/m., Special	"	4		
	100-7	71	Split Pin, 5/32" x 3/4"	"	2		
9/15/33132	A8/2249	72	<b>OIL SUCTION PIPE EXTENSION</b> ...	"	1	} Oil Suction Pipe } Extension	
	101-6	73	Pin, Taper, 1/8" x 1", 1-30 Taper	"	1		
	Z45439	74	<b>Spring</b> ...	"	1		
9/15/33134	Z1/43226	75	Washer, Sealing, Special ...	"	1	} Crankcase } Bottom Half to } Extension Casing	
9/15/33135	Z30679	76	Washer, Special, 16 S.W.G.	"	1		
9/15/33182	A3/19497	77	<b>Joint</b> ...	"	1		
	Z32034	78	Nut, Plain, 3/8" B.S.F.	"	38		
	Z4/30696	79	Washer, Grover, 3/8"	"	38		



B.R. Cat. No.	A.E.C. Basic Part No.	Plate Ref.	Designation	Used on	No. Req. per Engine	Remarks	
		<b>A5</b>	<b>ENGINE—Continued</b>	<b>All Models</b>			
9/15/33150	S1439		<b>OIL FILLER AND CAP COMPLETE</b> ...	"	1	} End of Setscrew to be Riveted Over	
9/15/33152	S1437		<b>FILLER CAP COMPLETE</b> ...	"	1		
9/15/33153	S10639	80	Cap ...	"	1		
9/15/35714	Z5/30684	81	Washer, Special, 3 1/4" O/D. x 2 3/2" I/D....	"	1		
9/15/35715	Z30898	82	Retainer ...	"	1		
	148-18	83	Setscrew, No. 2 B.A. x 7/16"	"	1		
	149-14	84	Nut, Plain, No. 2 B.A. ...	"	1		
9/15/33154	S14603	85	Handle, Lifting ...	"	1		} Oil Filler and Cap
9/15/33161	Z2/45477	86	<b>Spring, Cap to Body</b> ...	"	2		
9/15/33158	Z47095	87	Pin, Cap Spring ...	"	1		
9/15/33157	Z47076	88	Pin, Body Spring ...	"	1		
	Z2/30652	89	Washer, 3/8" Steel Bright ...	"	2		
	Z4/30686	90	Washer, Thackray, 3/8" ...	"	2		
	100-100	91	Split Pin, 3/8" x 7/8" ...	"	2		
9/15/33151	A19752	92	Body, Oil Filler ...	"	1		
9/15/33166	125-155	93	Stud, 3/8" B.S.F. x 1 7/8", Special ...	"	2		
9/15/33165	Z1/47023	94	Pin, Spring ...	"	1		
9/15/33175	AB2503	} 95	<b>OIL FILLER TUBE COMPLETE</b> ...	A220L/Y	1	} Length 2' 3 1/8"	
9/15/33177	AB2501		<b>OIL FILLER TUBE COMPLETE</b> ...	A220S/W	1		} Length 2' 0 1/2"
9/15/33172	A4/19418	96	<b>Joint</b> ...	All Models	1	} Filler Tube to Extension Casing	
	Z32034	97	Nut, Special, Plain, 3/8" B.S.F. ...	"	4		
	Z4/30696	98	Washer, Special, Grover, 3/8" ...	"	4		
9/15/33171	A4/19405	99	<b>Joint</b> ...	"	1	} Oil Filler Body to Filler Tube	
	85-34	100	Nut, Plain, 3/8" B.S.F. ...	"	2		
	135-34	101	Washer, Grover, 3/8" ...	"	2		
9/15/33169	Z15/30748	} 102	Bolt, 3/8" B.S.F. x 6 1/2" Long ...	A220L/Y	1	} Oil Filler Tube Clip	
9/15/33170	Z15/30734		Bolt, 3/8" B.S.F. x 5 1/2" Long ...	A220S/W	1		
	Z32034		103	Nut, Plain, 3/8" B.S.F. ...	All Models		1
	Z4/30696		104	Washer, Grover, 3/8" ...	"		1
9/15/33140	A1/2546		<b>DIPSTICK COMPLETE</b> ...	"	1	} Dipstick	
9/15/35716	A19234	105	Handle ...	"	1		
9/15/35717	A19096	106	Blade ...	"	1		
9/15/35718	114-54	107	Rivet, Snap Hd., 1/8" x 3/8" ...	"	1		
9/15/35719	114-65	108	Rivet, Snap Hd., 1/8" x 3/8" } Mild Steel ...	"	1		
				"	1		

B.R. Cat. No.	A.E.C. Basic Part No.	Plate Ref.	Designation	Used on	No. Req. per Engine	Remarks
		<b>A6</b>	<b>ENGINE—Continued</b>	All Models		
9 15 56257	A0561		<b>OIL PUMP COMPLETE</b> ... ..	"	1	Pressure and Scavenger
9 15 56310	AA9303		<b>OIL PUMP BODY AND COVER COMPLETE</b> ... ..	"	1	
9 15 56259	A20729	1	Body, Oil Pump ... ..	"	1	Body to Bearing Cap
9 15 56270	Z44040	2	Dowel ... ..	"	2	
9 15 56263	A6137	3	<b>OIL PUMP BODY COVER</b> ... ..	"	1	Pressure Scavenger
9 15 56266	A6138	6	<b>OIL PUMP BODY COVER</b> ... ..	"	1	
9 15 35583	Z3/43722	4	Setscrew, Special, $\frac{5}{16}$ " B.S.F. $\times \frac{3}{4}$ " ... ..	"	1	Pressure Cover
9 15 56261	Z18/30758	9	Bolt, Special, $\frac{5}{16}$ " B.S.F. $\times 4\frac{5}{16}$ " ... ..	"	1	
	86-33	10	Nut, Slotted, $\frac{5}{16}$ " B.S.F. ... ..	"	1	
	100-3	11	Split Pin, $\frac{1}{16}$ " $\times \frac{5}{8}$ " ... ..	"	1	Scavenger Cover
9 15 35583	Z3/43722	7	Setscrew, Special, $\frac{5}{16}$ " B.S.F. $\times \frac{3}{4}$ ", Drilled ... ..	"	1	
9 15 55791	Z5/30792	8	Setscrew, Special, $\frac{5}{16}$ " B.S.F. $\times 1\frac{1}{4}$ ", Drilled ... ..	"	1	
9 15 56261	Z18/30758	9	Bolt, Special, $\frac{5}{16}$ " B.S.F. $\times 4\frac{5}{16}$ " ... ..	"	1	Scavenger Cover
	86-33	10	Nut, Slotted, $\frac{5}{16}$ " B.S.F. ... ..	"	1	
	100-3	11	Split Pin, $\frac{1}{16}$ " $\times \frac{5}{8}$ " ... ..	"	1	
9 15 35492	Z11024	20	<b>Bush</b> ... ..	"	1	Pressure Scavenger
9 15 56262	Z1/10165	21	<b>Bush</b> ... ..	"	1	
9 15 56290	A21131	13	<b>Spindle</b> ... ..	"	1	Driving Gear
9 15 56293	A20828	14	<b>Wheel, Driving, External</b> ... ..	"	1	
9 15 35565	157-5	15	Key, Woodruff, No. 5 ... ..	"	1	External Driving Wheel
9 15 34200	Z31992	16	Nut, Special, $\frac{5}{8}$ " B.S.F. 9 m/m. wide ... ..	"	1	
	100-16	17	Split Pin, $\frac{1}{8}$ " $\times 1\frac{3}{8}$ " ... ..	"	1	
9 15 56294	A20827	18	<b>Wheel, Driving, Internal</b> ... ..	"	1	Pressure Scavenger
9 15 56295	A20831	19	<b>Wheel, Driving, Internal</b> ... ..	"	1	
9 15 56280	156-165	22	Key, Special ... ..	"	2	Driven Gear
9 15 56289	A21127	23	<b>Spindle</b> ... ..	"	1	
9 15 56288	202-3	24	Snug ... ..	"	1	Driven Gear Spindle
9 15 56283	Z1/44546	25	Plug, Special ... ..	"	1	
9 15 56302	138-1	26	Washer, C. & A., $65 \times 18 \times 15$ m/m., Special ... ..	"	1	As req. Driving Spindle
9 15 56284	Z4/46522		Shim, 0-010" ... ..	"	1	
9 15 56285	Z4/46523		Shim, 0-003" ... ..	"	1	
9 15 56286	Z4/46524		Shim, 0-002" ... ..	"	1	Pressure Scavenger
9 15 56271	AB0911		<b>DRIVEN GEAR AND BUSH</b> ... ..	"	1	
9 15 56274	AB0912		<b>DRIVEN GEAR AND BUSH</b> ... ..	"	1	Pressure Scavenger
9 15 56311	A20925	27	Gear ... ..	"	1	
9 15 56312	A20926	28	Gear ... ..	"	1	Pressure Scavenger
9 15 56272	Z1/10125	29	<b>Bush</b> ... ..	"	1	
9 15 56275	Z1/10114	30	<b>Bush</b> ... ..	"	1	Pressure Scavenger
9 15 56255	A78213	31	Plunger ... ..	"	1	
9 15 56298	Z3/45410	32	<b>Spring</b> ... ..	"	1	Oil Release Valve
9 15 56299	A78207	33	Stop, Spring ... ..	"	1	
	100-16	34	Split Pin, $\frac{1}{8}$ " $\times 1\frac{3}{8}$ " ... ..	"	1	
9 15 56297	A78310	35	Screw, Adjusting, Special ... ..	"	1	Oil Release Valve
9 15 56250	A2/75167	36	Cover, Adjusting Screw ... ..	"	1	
9 15 56254	Z1/44733	37	Plate, Locking ... ..	"	1	Oil Release Valve
9 15 56251	A3/19499	38	<b>Joint</b> ... ..	"	2	
	Z2/32047	39	Nut, Plain, $\frac{5}{16}$ " B.S.F. ... ..	"	2	Oil Release Valve
	Z4/30692	40	Washer, Grover, $\frac{5}{16}$ " ... ..	"	2	

B.R. Cat. No.	A.E.C. Basic Part No.	Plate Ref.	Designation	Used on	No. Req. per Engine	Remarks
		<b>A6</b>	<b>ENGINE—Continued</b>			
9/15/55745	A9/2295	41-45	<b>OIL DELIVERY PIPE COMPLETE</b> ... ..	All Models	1	Front Connection to Oil Pump Body
9/15/55756	Z2/46565	46	Shim, 0-005" ... ..	"	As req.	
9/15/55757	Z2/46566		Shim, 0-010" ... ..	"		
9/15/55758	Z2/46567	47	Shim, 0-032" ... ..	"	2	Delivery Pipe
9/15/55740	A4/19404		<b>Joint</b> ... ..	"		
9/15/55755	Z1/44539	48	Plug, Special ... ..	"	2	Centre Connection
9/15/56313	138-131	49	Washer, Copper, 16.5×22×2 m/m., Special	"	2	
9/15/55761	Z14/30754	50	Bolt, Special, $\frac{5}{16}$ " B.S.F. × $2\frac{3}{8}$ " ... ..	"	2	Intermediate and Rear Connections
9/15/55762	Z18/30727		Bolt, Special, $\frac{5}{16}$ " B.S.F. × $3\frac{1}{8}$ " ... ..	"	2	
9/15/55760	Z7/30712	51	Bolt, Special, $\frac{3}{8}$ " B.S.F. × $1\frac{1}{2}$ " ... ..	"	8	
	219-21	52	Wire, Locking, Iron, 16 S.W.G. ... ..	"	As req.	Pressure Take Off Extension Casing
9/15/55735	A9/2296	53	<b>OIL PIPE AND PLATE COMPLETE</b> ... ..	"	1	
9/15/55730	S2/13354	55	Adaptor, Special ... ..	A220L/Y	1	Adaptor
9/15/55731	S2/13368		Adaptor, Special ... ..	A220S/W	1	
9/15/55739	136-37	56	Lockwasher, $\frac{3}{8}$ " Dia. Hole ... ..	All Models	1	Pressure Pump Rear Flange Front Connection
9/15/55732	81-2034		Cone, Union, $\frac{1}{4}$ " O/D. Pipe. Tecaletit Drg. Z7152/2	"	1	
9/15/55734	A79009	57	Brass ... ..	"	1	Front Connection to Oil Pump
9/15/55785	A8/2226	58-60	Nut, Union, Special, $\frac{7}{16}$ " B.S.F. ... ..	"	1	
9/15/55772	A4/19403		61	<b>OIL SUCTION PIPE COMPLETE</b> ... ..	"	1
9/15/55790	103-194	62	<b>Joint</b> ... ..	"	1	Through Extension Casing
9/15/55795	Z2/46568	63	Plug, $\frac{7}{8}$ " Gas ... ..	"	2	
9/15/55796	Z2/46569		Shim, 0-005" ... ..	"	2	
9/15/55797	Z2/46570	64	Shim, 0-010" ... ..	"	As req.	Front Connection to Oil Pump
9/15/55780	A4/19402		Shim, 0-003" ... ..	"		
9/15/55791	Z5/30792	65	<b>Joint</b> ... ..	"	2	Through Extension Casing
9/15/55792	Z5/30791	66	Setscrew, Special, $\frac{5}{16}$ " B.S.F. × $1\frac{1}{4}$ ", Drilled ... ..	"	1	
	219-21	67	Setscrew, Special, $\frac{5}{16}$ " B.S.F. × $1\frac{3}{4}$ ", Drilled ... ..	"	As req.	Scavenger Pump Front Connection Rear Connection
9/15/55771	Z9/30719		Wire, Locking, Iron, 16 S.W.G. ... ..	"		
9/15/55794	Z17/30769	68	Bolt, Special, $\frac{5}{16}$ " B.S.F. × 3", Drilled ... ..	"	3	Rear Connection
	86-33		Bolt, Special, $\frac{5}{16}$ " B.S.F. × 3", Hd. Drilled ... ..	"		
9/15/40305	138-151	69	Nut, Slotted, $\frac{5}{16}$ " B.S.F. ... ..	"	3	Delivery Pipe Flange to Scavenger Pump Cover Scavenger Pump
	100-7	70	Washer, Copper, $\frac{3}{4}$ " × 15 × 1 m/m., Special	"	3	
9/15/55775	A8/2225	71-74	Split Pin, $\frac{5}{16}$ " × $\frac{3}{4}$ " ... ..	"	3	Oil Suction Pipe
5/15/55772	A4/19403		75	<b>OIL DELIVERY PIPE COMPLETE</b> ... ..	"	
9/15/55278	A4/19408	76	<b>Joint</b> ... ..	"	1	Suction Pipe to Support Bracket
9/15/55770	Z15/30725	77	<b>Joint</b> ... ..	"	1	
9/15/55771	Z9/30719	78	Bolt, Special, $\frac{5}{16}$ " B.S.F. × $2\frac{3}{8}$ " ... ..	"	2	Suction Pipe to Support Bracket
	86-33	79	Bolt, Special, $\frac{5}{16}$ " B.S.F. × 3", Drilled ... ..	"	1	
9/15/40305	138-151	80	Nut, Slotted, $\frac{5}{16}$ " B.S.F. ... ..	"	3	Suction Pipe to Support Bracket
	100-7	81	Washer, Copper, $\frac{3}{4}$ " × 15 × 1 m/m., Special	"	3	
9/15/35583	Z3/43722	82	Split Pin, $\frac{5}{16}$ " × $\frac{3}{4}$ " ... ..	"	2	Suction Pipe to Support Bracket
	219-21	83	Setscrew, Special, $\frac{5}{16}$ " B.S.F. × $\frac{3}{8}$ ", Drilled ... ..	"	9"	
		84-85	Wire, Locking, Iron, 16 S.W.G. ... ..	"	1	Suction Pipe to Support Bracket
9/15/55805	A8/2224		86	<b>OIL SUCTION PIPE COMPLETE</b> ... ..		
9/15/55802	A3/19498	87	<b>Joint</b> ... ..	"	1	Suction Pipe to Support Bracket
9/15/55791	Z5/30792	88	Setscrew, Special, $\frac{5}{16}$ " B.S.F. × $1\frac{1}{4}$ ", Drilled ... ..	"	2	
9/15/56313	138-131	89	Washer, Copper, 16.5×22×2 m/m., Special	"	1	Suction Pipe to Support Bracket
9/15/56755	Z1/44539	90	Plug, Special ... ..	"	1	
	219-21	91	Wire, Locking, Iron, 16 S.W.G. ... ..	"	9"	Suction Pipe to Support Bracket
9/15/55801	Z2/31318	92	Clip ... ..	"	1	
9/15/55800	Z7/30760	93	Bolt, Special, $\frac{5}{16}$ " B.S.F. × $\frac{5}{8}$ ", Drilled ... ..	"	1	Suction Pipe to Support Bracket
	86-33	94	Nut, Slotted, $\frac{5}{16}$ " B.S.F. ... ..	"	1	
	100-7		Split Pin, $\frac{5}{16}$ " × $\frac{3}{4}$ " ... ..	"	1	

B.R. Cat. No.	A.E.C. Basic Part No.	Plate Ref.	Designation	Used on	No. Req. per Engine	Remarks
		<b>A6</b>	<b>ENGINE—Continued</b>	<b>All Models</b>		
9 15 56315	Z1804		<b>SUPPORT BRACKET COMPLETE</b> ... ..	"	1	} Pressure to Scavenger Suction Pump
9 15 55801	Z2/31318		Clip ... ..	"	1	
9 15 55800	Z7/30760		Bolt, Special, $\frac{5}{16}$ " B.S.F. $\times \frac{5}{8}$ " Drilled ... ..	"	1	
	86-33		Nut, Slotted, $\frac{5}{16}$ " B.S.F. ... ..	"	1	
	100-7		Split Pin, $\frac{5}{16}$ " $\times \frac{3}{8}$ " ... ..	"	1	
9 15 55280	A1/3775	95-99	<b>OIL PIPE COMPLETE</b> ... ..	"	1	} Extension to Filter —Filter to Cooler— Cooler to Extension
9 15 56316	132-12	100	Nut, Union, $\frac{3}{4}$ " O/D. Pipe, $\frac{7}{8}$ " Gas., Special ... ..	"	2	
9 15 56317	130-7	101	Cone, Union, $\frac{3}{4}$ " O/D. Pipe, Special ... ..	"	2	} Oil Pipe
9 15 55278	A4/19408	76	<b>Joint</b> ... ..	"	1	
	Z2/32047	102	Nut, Plain, $\frac{5}{16}$ " B.S.F. ... ..	"	3	} Top Connection Connection to
	Z4/30692	103	Washer, Special, Grover, $\frac{5}{16}$ " ... ..	"	3	
9 15 56318	Z5/31341		Bracket ... ..	"	1	} Extension Casing
9 15 56319	Z5/31342		Clip ... ..	"	1	
9 15 56320	Z14/30730		Setscrew, $\frac{7}{16}$ " B.S.F. $\times 1$ " ... ..	"	1	} Oil Cooler Pipes
9 15 33181	Z4/30697		Washer, Grover, $\frac{7}{16}$ " ... ..	"	1	
9 15 56321	Z12/30711		Bolt, $\frac{1}{4}$ " B.S.F. $\times \frac{3}{4}$ " ... ..	"	1	} Bracket
	Z2/32045		Nut, Plain, $\frac{1}{4}$ " B.S.F. ... ..	"	1	
	Z3/30616		Washer, Grover, $\frac{1}{4}$ " ... ..	"	1	} Clip to Bracket
9 15 35395	A7/2203		<b>OIL PIPE COMPLETE</b> ... ..	"	1	
9 15 55250	AA3367	<b>A7</b>	<b>OIL FILTER COMPLETE</b> ... ..	"	1	} Front Camshaft Bearing to Bevel Drive
9 15 55251	AA3369		<b>OIL FILTER CASING WITH STUDS</b> ... ..	"	1	
	A89015	1	Casing, Oil Filter ... ..	"	1	} Not Supplied as Spares
9 15 35434	Z7/30506		Stud, Special, $\frac{5}{16}$ " B.S.F. $\times 2\frac{1}{8}$ " ... ..	"	8	
9 15 55260	A81450	2	Cover, Oil Filter ... ..	"	1	} Cover to Filter Casing
9 15 55267	A5/19472	3	<b>Joint</b> ... ..	"	1	
	Z2/32047	} 4	Nut, Plain, $\frac{5}{16}$ " B.S.F. ... ..	"	8	
	Z4/30688		Washer, Thackray, $\frac{5}{16}$ " ... ..	"	8	
9 15 55266	A79907	} 5	Guide, Release Valve ... ..	"	1	
9 15 55272	A78203		Plunger ... ..	"	1	
9 15 55273	Z2/45449		<b>Spring</b> ... ..	"	1	} Oil Filter Body Release Valve
9 15 35688	138-211		Washer, Copper, $32 \times 40 \times 2$ m/m., Special ... ..	"	1	
	99-133		Circlip, Seeger, $\frac{3}{8}$ " Bore ... ..	"	1	
9 15 55265	AA3308	6	<b>ELEMENT COMPLETE</b> ... ..	"	1	} Oil Filter Element
9 15 55270	A81505		Plate, End ... ..	"	1	
9 15 55275	Z1/45470	7	<b>Spring, Element</b> ... ..	"	1	} Oil Filter Connection
9 15 55276	A89101	8	Stiffener ... ..	"	1	
9 15 55295	Z4/30789	11	Setscrew, Special, $\frac{5}{16}$ " B.S.F. $\times 1\frac{1}{2}$ " ... ..	"	2	} Oil Filter Connection
9 15 55296	Z4/30774	12	Setscrew, Special, $\frac{5}{16}$ " B.S.F. $\times \frac{7}{8}$ " ... ..	"	1	
	219-21	13	Wire, Locking, Iron, 16 S.W.G. ... ..	"	18"	} Drilled Studs } Alter- natives
	Z2/32061		Nut, Slotted, $\frac{7}{16}$ " B.S.F. ... ..	"	3	
	Z5/30600		Washer, Steel Bright, $\frac{7}{16}$ " ... ..	"	3	
	100-10		Split Pin, $\frac{3}{32}$ " $\times \frac{7}{8}$ " ... ..	"	3	
	90-166		Locknut, $\frac{7}{16}$ " B.S.F. "Simmonds" Nylac, NP-F146 ... ..	"	3	
	Z5/30600		Washer, Steel Bright, $\frac{7}{16}$ " ... ..	"	3	



B.R. Cat. No.	A.E.C. Basic Part No.	Plate Ref.	Designation	Used on	No. Req. per Engine	Remarks
		<b>A8</b>	<b>ENGINE—Continued</b>	<b>All Models</b>		
9/15/61470	A1/1155		<b>WATER PUMP COMPLETE</b> ... ..	"	1	
9/15/61473	A1/23818	1	Body, Water Pump ... ..	"	1	
9/15/61475	A1/1153	2	<b>WATER PUMP COVER AND SLEEVE</b> ... ..	"	1	
9/15/61484	A4/19434	3	<b>Joint</b> ... ..	"	1	
9/15/35516	Z43797	4	Setscrew, Special, $\frac{5}{16}$ " B.S.F. $\times$ 21 m/m. ... ..	"	7	} Water Pump Cover
9/15/40310	I38-129	5	Washer, Copper, $\frac{21}{64}$ " $\times$ 15 m/m. $\times$ $\frac{3}{32}$ ", Special ... ..	"	7	
9/15/61500	A23947	6	Spindle ... ..	"	1	
9/15/61503	A24024	7	Vane ... ..	"	1	
9/15/61485	Z1/43111	8	Key, Special ... ..	"	1	} Water Pump Spindle
	91-65	} 9	Nut, Slotted, $\frac{7}{16}$ " B.S.F. ... ..	"	1	
	100-11		Split Pin, $\frac{3}{32}$ " $\times$ 1" ... ..	"	1	
9/15/61494	Z48856	10	<b>Spring Ring</b> ... ..	"	1	
9/15/61478	A27418	11	Gland, Carbon ... ..	"	1	
9/15/61498	A31022	12	<b>Seal, Rubber, Gland</b> ... ..	"	1	} Water Pump Vane
9/15/61480	A55502	13	Housing ... ..	"	1	
9/15/61481	A55503	14	Ring, Retaining ... ..	"	1	
9/15/61501	Z2/45476	15	<b>Spring</b> ... ..	"	1	
9/15/61493	A21773	16	Pulley ... ..	"	1	
9/15/61499	5091-2	17	<b>Oil Seal, <math>1\frac{7}{16}</math>" <math>\times</math> <math>2\frac{1}{4}</math>" <math>\times</math> <math>\frac{3}{8}</math>" Wide, Weston</b> ... ..	"	1	
9/15/61489	Z6/44891	18	Distance Piece ... ..	"	1	Shaft
9/43/5266	5-4	19	<b>Bearing, Ball, Hoffmann MS.9, R. &amp; M. MJ<math>\frac{7}{8}</math>, "OO" Fit</b> ... ..	"	2	
	99-271	20	Circlip, "Seeger", $2\frac{3}{16}$ " Bore ... ..	"	1	
9/15/61497	5091-1	21	<b>Oil Seal, "Gaco", No. MIS.11</b> ... ..	"	1	
9/15/61483	A63402	22	Hub ... ..	"	1	Pulley
9/15/61487	I56-169	23	Key, $\frac{1}{4}$ " $\times$ $\frac{3}{16}$ " $\times$ $\frac{7}{8}$ ", Special ... ..	"	1	
	136-36	24	Tabwasher, $\frac{5}{8}$ " ... ..	"	1	
	85-38	25	Nut, Plain, $\frac{5}{8}$ " B.S.F. ... ..	"	1	
9/15/35586	Z11/30779	} 26	Setscrew, $\frac{5}{16}$ " B.S.F. $\times$ $\frac{3}{4}$ " ... ..	"	5	} Pulley Hub
	Z4/30692		Washer, Grover, $\frac{5}{16}$ " ... ..	"	5	
9/15/99039	81-312	27	Lubricator, Tecalemit No. 4657 ... ..	"	1	$\frac{3}{8}$ " B.S.F.
9/15/61508	Z16/30730	28	Setscrew, $\frac{1}{2}$ " B.S.F. $\times$ $1\frac{7}{8}$ " ... ..	"	1	
9/15/61509	Z16/30743	29	Setscrew, $\frac{1}{2}$ " B.S.F. $\times$ $2\frac{5}{8}$ " ... ..	"	2	} Water Pump to Casing
	Z4/30695	30	Washer, Grover, $\frac{1}{2}$ " ... ..	"	3	
9/15/61468	A3/25716	31	Pipe, Water ... ..	"	1	
9/15/61467	A4/19414	32	<b>Joint</b> ... ..	"	1	} Water Pump
9/15/61466	A1/24458	33	<b>Hose, <math>1\frac{3}{4}</math>" I/D. <math>\times</math> <math>2\frac{3}{8}</math>"</b> ... ..	"	1	
	332-74	34	Clip, Jubilee, No. 2 ... ..	"	2	
9/15/61507	40-41	} 35	Bolt, $\frac{5}{16}$ " B.S.F. $\times$ $2\frac{1}{8}$ " ... ..	"	2	} Water Pipe
	Z4/30686		Washer, Thackray, $\frac{3}{8}$ " ... ..	"	2	



B.R. Cat. No.	A.E.C. Basic Part No.	Plate Ref.	Designation	Used on	No. Req. per Engine	Remarks
9/15/37603	AB3809	A8	<b>ENGINE—Continued</b>			
			<b>RIGHT ANGLE DRIVE CASING COMPLETE WITH BRACKET</b> ... ..	A220S/W	1	
9/15/37530	AB3806		<b>RIGHT ANGLE DRIVE CASING COMPLETE...</b> ... ..		1	
9/15/37542	AB3807		<b>DRIVE CASING WITH STUDS...</b> ... ..	"	1	
	A93726	53	Casing ... ..	"	1	
9/15/37546	124-1155	54	Stud, $\frac{3}{8}$ " B.S.F. $\times$ $1\frac{1}{2}$ ", Special ... ..	"	4	Not supplied as Spares
9/15/37546	124-1155	55	Stud, $\frac{3}{8}$ " B.S.F. $\times$ $1\frac{1}{2}$ ", Special ... ..	"	6	Foot Stud
9/15/37548	124-1154	56	Stud, $\frac{3}{8}$ " B.S.F. $\times$ $1\frac{3}{8}$ ", Special ... ..	"	6	End Cap
9/15/37575	Z2/44500	57	Plug, Oil Filler ... ..	"	1	Housing
9/15/37590	Z6/30684	58	Washer, Special, $3\frac{1}{4}$ " O/D. $\times$ $2\frac{9}{32}$ " I/D. $\times$ $\frac{5}{32}$ " ... ..	"	1	
9/15/37535	78-850	59	<b>BREATHER, A.C. SPHINX 1574857</b> ... ..	"	1	
9/15/37588	A93727	60	Tube, Breather ... ..	"	1	
	332-74	61	Clip, Jubilee, No. 2 ... ..	"	1	
9/15/37574	Z2/44527	62	Plug, Drain ... ..	"	1	
9/15/37591	Z44907	63	Washer, Special, $1\frac{3}{16}$ " O/D. $\times$ $\frac{3}{4}$ " I/D. $\times$ $\frac{3}{32}$ " ... ..	"	1	
9/15/37536	A93712	64	Cap, End ... ..	"	1	Output Shaft, Rear
9/15/37562	Z44241	65	<b>Joint</b> ... ..	"	1	
9/15/30582	121-103	66	Setscrew, $\frac{1}{4}$ " B.S.F. $\times$ $\frac{5}{8}$ " ... ..	"	4	End Cap
	134-2		Washer, Plain, $\frac{1}{4}$ " ... ..	"	4	
9/15/37580	A93711	67	Shaft, Output ... ..	"	1	
9/15/37595	A92608	68	<b>Bevel Wheel</b> ... ..	"	1	
9/15/37565	156-168	69	Key, $\frac{1}{4}$ " $\times$ $\frac{3}{16}$ " $\times$ $\frac{5}{8}$ " ... ..	"	1	
9/15/37533	17-1	70	<b>Bearing, Roller, 1" <math>\times</math> 2<math>\frac{1}{4}</math>" <math>\times</math> <math>\frac{5}{8}</math>"</b> ... ..	"	1	
9/15/37570	Z3/32046	71	Locknut, Special, $\frac{7}{8}$ ", 16 T.P.I. $\times$ $\frac{1}{2}$ " Wide ... ..	"	1	
9/43/5279	5-5	72	<b>Bearing, Ball, Hoffmann MS.10, R. &amp; M. MJ.1, "OO" Fit</b> ... ..	"	1	Output Shaft
9/15/37560	A93709	73	Housing ... ..	"	1	
9/15/37581	Z3/46592	74	Shim, 0-003" ... ..	"	As req.	
9/15/37582	Z3/46592A		Shim, 0-005" ... ..	"		
9/15/37583	Z3/46592B		Shim, 0-010" ... ..	"		
9/15/37538	A93713	75	Cap, End ... ..	"	1	
9/15/37563	Z44242	76	<b>Joint</b> ... ..	"	1	End Cap
	85-34	77	Nut, Plain, $\frac{3}{8}$ " B.S.F. ... ..	"	6	
	135-34		Washer, Grover, $\frac{3}{8}$ " ... ..	"	6	
9/15/61499	5091-2	78	<b>Oil Seal, 1<math>\frac{7}{16}</math>" <math>\times</math> 2<math>\frac{1}{4}</math>" <math>\times</math> <math>\frac{3}{8}</math>" Wide, Weston</b> ... ..	"	1	
9/15/37585	Z8/44855	79	Spacer ... ..	"	1	
9/15/37552	A1/22879	80	Flange ... ..	"	1	
9/15/37568	156-174	81	Key, $\frac{3}{16}$ " $\times$ $\frac{3}{16}$ " $\times$ $\frac{7}{8}$ " ... ..	"	1	Output Shaft
	86-38	82	Nut, Slotted, $\frac{5}{8}$ " B.S.F. ... ..	"	1	
	100-14		Split Pin, $\frac{1}{8}$ " $\times$ $1\frac{1}{2}$ " ... ..	"	1	

B.R. Cat. No.	A.E.C. Basic Part No.	Plate Ref.	Designation	Used on	No. Req. per Engine	Remarks
		<b>A8</b>	<b>ENGINE—Continued</b>			
			<b>RIGHT ANGLE DRIVE CASING WITH BRACKET—Continued</b>	A220S/W		
			<b>RIGHT ANGLE DRIVE CASING—Continued</b>	"		
9/15/37579	A93710	83	Shaft, Input ... ..	"	1	} Input Shaft
9/15/37592	A92607	84	Bevel Wheel ... ..	"	1	
9/15/37565	156-168	85	Key, $\frac{1}{4} \times \frac{3}{16} \times \frac{5}{8}$ ... ..	"	1	
9/43/5279	5-5	86	Bearing, Ball, Hoffmann MS.10, R. & M. MJ.I, "OO" Fit ... ..	"	1	
9/15/37584	Z8/44853	87	Spacer ... ..	"	1	
9/43/5279	5-5	86	Bearing, Ball, Hoffmann MS.10, R. & M. MJ.I, "OO" Fit ... ..	"	1	
9/15/37561	A93708	88	Housing ... ..	"	1	
9/15/37581	Z3/46592	} 89	Shim, 0-003" ... ..	"	} As req.	
9/15/37582	Z3/46592A		Shim, 0-005" ... ..	"		
9/15/37583	Z3/46592B		Shim, 0-010" ... ..	"		
	85-34		Nut, Plain, $\frac{3}{8}$ " B.S.F. ... ..	"		6
	135-34	} 90	Washer, Grover, $\frac{3}{8}$ " ... ..	"	6	
9/15/37540	A93714		91	Cap, End ... ..	"	1
9/15/37564	Z44243	92	Joint ... ..	"	1	} End Cap
9/15/37578	121-105	} 93	Setscrew, $\frac{1}{4}$ " B.S.F. $\times \frac{7}{8}$ " ... ..	"	6	
	135-32		93	Washer, Grover, $\frac{1}{4}$ " ... ..	"	
9/15/61499	5091-2	94	Oil Seal, $1\frac{7}{16} \times 2\frac{1}{4} \times \frac{3}{8}$ " Wide, Weston ... ..	"	1	} Input Shaft Alternative to A1/21721
9/15/37577	Z8/44854	95	Ring, Oil Seal ... ..	"	1	
9/15/37586	Z8/44852	96	Spacer ... ..	"	1	
9/15/37576	A1/21721	} 97	Pulley, Fan Drive ... ..	"	} 1	
9/15/37606	A1/21792		97	Pulley, Fan Drive, High Speed ... ..		"
9/15/61487	156-169	98	Key, $\frac{1}{4} \times \frac{3}{16} \times \frac{7}{8}$ , Special ... ..	"	1	
	86-39	99	Nut, Slotted, $\frac{3}{8}$ " B.S.F. ... ..	"	1	
	100-18	100	Split Pin, $\frac{5}{32} \times 1\frac{3}{8}$ " ... ..	"	1	
9/15/37515	AB3512	101	<b>BRACKET COMPLETE</b> ... ..	"	1	} Bracket to Casing
	85-34	} 102	Nut, Plain, $\frac{3}{8}$ " B.S.F. ... ..	"	4	
	135-4		102	Washer, Thackray, $\frac{3}{8}$ " ... ..	"	
9/15/37604	Z47854		Eye Bolt, Special ... ..	"	1	
	86-36	} 103	Nut, Slotted, $\frac{1}{2}$ " B.S.F. ... ..	"	1	
	134-6		103	Washer, Plain, $\frac{1}{2}$ " ... ..	"	1
	100-9		103	Split Pin, $\frac{3}{32} \times 1\frac{1}{4}$ " ... ..	"	1
	85-36	} 104	Nut, Plain, $\frac{1}{2}$ " B.S.F. ... ..	"	2	
	134-6		104	Washer, Plain, $\frac{1}{2}$ " ... ..	"	1
9/15/37605	AB3522		<b>TENSIONER BRACKET COMPLETE</b> ... ..	"	1	} Right Angle Drive to Crankcase Bottom Half
9/15/37508	125-184	103	Stud, $\frac{7}{16}$ " B.S.F. $\times 1\frac{7}{8}$ ", Special ... ..	"	5	
	85-35	} 104	Nut, Plain, $\frac{7}{16}$ " B.S.F. ... ..	"	5	
	134-5		104	Washer, Plain, $\frac{7}{16}$ " ... ..	"	



B.R. Cat. No.	A.E.C. Basic Part No.	Plate Ref.	Designation	Used on	No. Req. per Engine	Remarks
9/15/34190	AB2906	A3 101	<b>ENGINE—Continued</b>	All Models		
			<b>AIR COMPRESSOR COMPLETE, CLAYTON</b>			
			<b>DEWANDRE TYPE PCGAI89</b> ... ..	"	1	
9/15/34192	AB4103		<b>DRIVE HOUSING COMPLETE</b> ... ..	"	1	
	A33122		Housing ... ..	"	1	Not Supplied as Spares
9/15/34193	Z1/10159		<b>Bush</b> ... ..	"	2	
9/15/34191	A15475		<b>Gear, Driving</b> ... ..	"	1	Driving Gear
9/15/34198	Z43123		Key, Special ... ..	"	1	
9/15/34200	Z31992		Nut, Special, $\frac{5}{8}$ " B.S.F. $\times$ 9 m/m., Wide ... ..	"	1	
	Z4/30693		Washer, Steel Bright, $\frac{5}{8}$ " ... ..	"	1	
	100-106		Split Pin, $\frac{1}{8}$ " $\times$ $1\frac{3}{8}$ " ... ..	"	1	Housing
9/15/34204	A3/75111		Plate, Cover... ..	"	1	
9/15/34195	A4/19440		<b>Joint...</b> ... ..	"	1	Housing Cover Plate
9/15/30582	121-103		Setscrew, $\frac{1}{4}$ " B.S.F. $\times$ $\frac{5}{8}$ " ... ..	"	3	
	135-92		Washer, Shakeproof, $\frac{1}{4}$ ", External ... ..	"	3	
9/15/34209	A46605		Washer, Thrust, Special ... ..	"	1	
9/15/34215	A4/19429	104	<b>Joint</b>	"		As req.
9/15/34244	Z2/46595		Shim, 0-002" ... ..	"		
9/15/34245	Z2/46596		Shim, 0-003" ... ..	"		
9/15/34246	Z2/46597		Shim, 0-006" ... ..	"		
9/15/34213	Z1/44079		Ring, Dowel ... ..	"	2	
9/15/34270	43-97	102	Bolt, $\frac{1}{2}$ " B.S.F. $\times$ $1\frac{3}{4}$ ", Drilled, Special ... ..	"	1	Housing to Engine Casing
9/15/34271	43-124	103	Bolt, $\frac{1}{2}$ " B.S.F. $\times$ $5\frac{1}{2}$ ", Drilled, Special ... ..	"	1	
9/15/34272	43-110		Bolt, $\frac{1}{2}$ " B.S.F. $\times$ $3\frac{3}{8}$ ", Drilled, Special ... ..	"	1	
	135-36		Washer, Grover, $\frac{1}{2}$ " ... ..	"	3	
9/15/34251	Z8/30546		Stud, Special, $\frac{3}{8}$ " & $\frac{1}{2}$ " B.S.F. Ends $\times$ 2" ... ..	"	1	Air Compressor
	85-34		Nut, Plain, $\frac{3}{8}$ " B.S.F. ... ..	"	1	
	134-4		Washer, Plain, $\frac{3}{8}$ " ... ..	"	1	
	135-94		Washer, Shakeproof, $\frac{3}{8}$ ", External ... ..	"	1	
9/15/34210	G1/25157		Adaptor ... ..	"	1	
9/15/35382	138-144		Washer, Copper, 27 $\times$ 34 $\times$ 2.5 m/m., Special ... ..	"	1	
9/15/34253	A3/60670		Tube, Drain ... ..	"	1	
9/15/34235	Z44565		Plug, Drain ... ..	"	1	
9/15/34259	138-201		Washer, Copper, $1\frac{1}{16}$ " $\times$ $1\frac{3}{8}$ " $\times$ $\frac{1}{16}$ ", Special ... ..	"	1	
9/15/34248	Z3/45426		<b>Spring, Drain Tube</b> ... ..	"	1	
9/15/34260	Z6/30626		Washer, Special, $1\frac{1}{4}$ " O/D. $\times$ $\frac{3}{4}$ " I/D. $\times$ 18 S.W.G. ... ..	"	1	
9/15/34240	5092-6		<b>"O" Ring, Gaco No. R129</b> ... ..	"	1	
9/15/34223	A10/2279	105	<b>OIL FEED PIPE COMPLETE</b> ... ..	"		
9/15/34273	Z7/31307		Clip ... ..	"	1	Oil Feed Pipe
9/15/35571	G25250	106	Pin, Banjo ... ..	"	1	
9/15/34220	G25269		Pin, Banjo ... ..	"	1	
9/15/34230	A74603		Washer, Copper, Special ... ..	"	2	Banjo Pin
9/15/35698	138-139		Washer, Copper, 10 $\times$ 21 $\times$ 2 m/m., Special ... ..	"	2	
	219-21		Wire, Locking, Iron, 16 S.W.G. ... ..	"	As req.	Air Suction Pipe
9/15/34275	5002-96		Olive, Clayton SF 491-10, Special ... ..	"	1	
9/15/34276	5002-97		Nut, Union, Clayton, SF 492-9, Special ... ..	"	1	
9/15/34291			<i>Blk. Oil pipe new item.</i>			

B.R. Cat. No.	A.E.C. Basic Part No.	Plate Ref.	Designation	Used on	No. Req. per Engine	Remarks
		<b>A9</b>	<b>ENGINE—Continued</b>	All Models		
9/15/47300	560-2406	1	<b>FUEL INJECTION PUMP COMPLETE</b>		1	
			C.A.V. TYPE NL6F90/161 ... ..	"	1	
9/15/47302	560-3518		<b>GOVERNOR, C.A.V. TYPE GLWB9</b>		1	
			(199/900) ... ..	"	1	
9/15/47425	560-2162		<b>FUEL LIFT PUMP COMPLETE, C.A.V.</b>		1	
			TYPE DFP3/2S ... ..	"	1	
9/15/42092	560-2548	2	Pointer, Timing, C.A.V., 7097/392 ... ..	"	1	
9/15/46630	A8/2245	3	<b>OVERFLOW PIPE COMPLETE</b> ... ..	"	1	
9/15/46544	Z4/31395	5	Clip ... ..	"	1	
9/15/46575	A8/2246	4	<b>AIR VENT PIPE COMPLETE</b> ... ..	"	1	
9/15/46544	Z4/31395	5	Clip ... ..	"	1	
9/15/42077	A1/4727	10/11	<b>FUEL INJECTION PUMP FLYWHEEL</b>		1	
			<b>COUPLING</b> ... ..	"	1	
9/15/35391	A23032	12	Coupling, Centre ... ..	"	1	Rubber
9/15/42081	Z1/44081	14	Dowel, Special... ..	"	1	
9/15/42088	Z1/44737	15	Plate, Locking ... ..	"	1	
9/15/42095	Z14/30781	16	Screw, No. 2 B.A. $\times \frac{5}{8}$ " ... ..	"	2	
	153-19	17	Washer, Grover, No. 2 B.A., Light Pattern... ..	"	2	
9/15/42080	A1/22890	18	Coupling, Fuel Injection Pump ... ..	"	1	
9/15/40276	Z12/30756	19	Screw, $\frac{5}{16}$ " B.S.F. $\times 1$ " ... ..	"	2	
	134-3	20	Washer, Plain, $\frac{5}{16}$ " ... ..	"	2	Fuel Injection Pump Coupling
	135-33	21	Washer, Grover, $\frac{5}{16}$ " ... ..	"	2	
9/15/42074	A19649	23	Bracket ... ..	"	1	
	Z2/32044	24	Nut, Plain, $\frac{1}{2}$ " B.S.F. ... ..	"	4	
	Z2/32047	25	Nut, Plain, $\frac{5}{16}$ " B.S.F. ... ..	"	1	
	Z5/30609	26	Washer, Thackray, $\frac{1}{2}$ " ... ..	"	4	
	Z4/30688	27	Washer, Thackray, $\frac{5}{16}$ " ... ..	"	1	
9/15/34213	Z1/44079	28	Ring Dowel ... ..	"	2	
9/15/42071	41-108	29	Bolt, $\frac{3}{8}$ " B.S.F. $\times 9\frac{3}{4}$ " ... ..	"	2	
9/15/42070	Z3/43766	30	Bolt, $\frac{3}{8}$ " B.S.F. $\times 3\frac{7}{8}$ " ... ..	"	2	
	Z32034	31	Nut, Plain, $\frac{3}{8}$ " B.S.F. ... ..	"	4	Bracket
	Z2/30652	32	Washer, Steel Bright, $\frac{3}{8}$ " ... ..	"	4	
	Z4/30686	33	Washer, Thackray, $\frac{3}{8}$ " ... ..	"	4	
9/15/42087	G1/14722	34	Pin, Pull Off Spring, Special ... ..	"	1	Fuel Injection Pump Bracket
	Z4/30686	35	Washer, Thackray, $\frac{3}{8}$ " ... ..	"	1	

B.R. Cat. No.	A.E.C. Basic Part No.	Plate Ref.	Designation	Used on	No. Req. per Engine	Remarks	
		<b>A9</b>	<b>ENGINE—Continued</b>	<b>All Models</b>			
9/15/46590	A11/2270	36	<b>FUEL INJECTION PIPE COMPLETE</b> ...	"	1	No. 1 Cylinder	
9/15/46591	A11/2271	37	<b>FUEL INJECTION PIPE COMPLETE</b> ...	"	1	No. 2 Cylinder	
9/15/46592	A11/2272	38	<b>FUEL INJECTION PIPE COMPLETE</b> ...	"	1	No. 3 Cylinder	
9/15/46593	A11/2273	39	<b>FUEL INJECTION PIPE COMPLETE</b> ...	"	1	No. 4 Cylinder	
9/15/46594	A11/2256	40	<b>FUEL INJECTION PIPE COMPLETE</b> ...	"	1	No. 5 Cylinder	
9/15/46595	A11/2257	41	<b>FUEL INJECTION PIPE COMPLETE</b> ...	"	1	No. 6 Cylinder	
9/15/46541	Z6/31394		Bracket ... ..	"	5	2 off on No. 1, 2 and 3 Cylinders 3 off on No. 4, 5 and 6 Cylinders	
9/15/46802	Z20/30713		Bolt, Special, 2 B.A. x $\frac{5}{8}$ " ... ..	"	6	} Fuel Injection Pipe Clips	
9/15/46803	Z10661		Damper ... ..	"	18		
9/15/46804	Z6/31395		Insulating Plate, Damper ... ..	"	3		
9/15/46553	Z5/31322		Clip ... ..	"	6		
9/15/46805	Z5/31323		Clamp Plate ... ..	"	1		
9/15/35681	Z13/30782		Bolt, Special, 2 B.A. x $\frac{1}{2}$ " ... ..	"	6		
	Z2/32056		Nut, Plain, 2 B.A. ... ..	"	12		
	Z4/30698		Washer, Special, Grover, 2 B.A., Light Pattern ...	"	12		
9/15/41805	562-150	51	<b>FUEL INJECTOR COMPLETE C.A.V. No. NLAI02S8BDLLI50S6064</b> ... ..	"	6		} Injector to Cylinder Head
	Z32034	52	Nut, Plain, $\frac{3}{8}$ " B.S.F. ... ..	"	12		
9/15/41838	562-50	53	Plug, Dust, Outer, Special ... ..	"	6		} Injector Storage only
9/15/41839	562-49	54	Plug, Dust, Inner, Special ... ..	"	6		
9/15/41800	562-51		Dust Cap, Nozzle, Special ... ..	"	6		
9/15/46580	A35608	55	Pipe, Injector Overflow ... ..	"	6	} Overflow Pipes	
9/15/46582	81-260	56	Olive, Brass, Tecalemit Drg. 100834 ... ..	"	12		
9/15/46619	81-264	57	Nut, Union, Tecalemit Drg. 100832 ... ..	"	12		
9/15/46625	A6/2280	58	<b>OVERFLOW GALLERY PIPE COMPLETE...</b> ... ..	"	1	} Fuel Gallery Pipe	
9/15/46618	132-3	59	Nut, $\frac{3}{8}$ " Gas ... ..	"	1		
9/11/664	13-11	60	Ball, Steel, $\frac{9}{16}$ " Dia. ... ..	"	1		
9/15/46619	81-264	61	Nut, Union, Tecalemit CL 17C ... ..	"	1		
9/11/628	13-5	61	Ball, Steel, $\frac{9}{32}$ " Dia. ... ..	"	1		
9/15/46617	Z4/31321	62	Clip ... ..	"	6		

B.R. Cat. No.	A.E.C. Basic Part No.	Plate Ref.	Designation	Used on	No. Req. per Engine	Remarks
9/15/70020	530-549	A5 109	<b>ENGINE—Continued</b> <b>DYNAMO COMPLETE, 7" DIA., C.A.V.</b> TYPE G7A24/4 ... ..			
9/15/70014	V1/0165	110	<b>STRAP COMPLETE</b> ... ..	A220L	1	} Dynamo Strap
9/15/70015	Z47007		Pin ... ..	"	1	
9/15/70005	Z11/30752	111	Bolt, Special, $\frac{3}{8}$ " B.S.F. $\times 3\frac{3}{4}$ " ... ..	"	2	
9/15/62930	Z32047	112	Nut, Special, $\frac{3}{8}$ " B.S.F. ... ..	"	1	
9/15/62945	Z1/30649	113	Washer, Special, $\frac{3}{4}$ " Sq., $\frac{1}{2}$ " Dia. ... ..	"	1	
9/15/70007	V11165	114	Bracket, Dynamo ... ..	"	2	
9/15/33087	125-191		Stud, $\frac{7}{16}$ " B.S.F. $\times 2\frac{3}{4}$ " Special ... ..	"	1	
	Z2/32062		Nut, Plain, $\frac{7}{16}$ " B.S.F. ... ..	"	4	
	Z4/30697		Washer, Grover, $\frac{7}{16}$ " ... ..	"	4	
	Z5/30600		Washer, Steel, Bright, $\frac{7}{16}$ " ... ..	"	4	
9/15/70013	A21777	115	Pulley, Dynamo ... ..	"	1	} Dynamo Bracket
9/15/70000	A13558		<b>Belt, Goodyear</b> ... ..	"	1	
9/15/70009	V7809	116	<b>ADJUSTING BRACKET COMPLETE</b> ... ..	"	1	2 off on DTO1/7
9/15/70010	Z16/30773 90-34		Screw, Adjusting ... .. Locknut, $\frac{7}{16}$ " B.S.F. ... ..	" "	1 1	
9/15/75510	V4410	117	<b>STARTER MOTOR COMPLETE, C.A.V.</b> TYPE U624A-3 ... ..	A220L	1	} Starter Motor
9/15/75509	V4424		<b>STARTER MOTOR COMPLETE, C.A.V.</b> TYPE U624A-26 ... ..	A220Y	1	
9/15/75710	V4407		<b>STARTER MOTOR COMPLETE, SIMMS</b> TYPE 624SGRE43 ... ..	A220S/W All Models	1	
9/15/75481	Z43485	118	Dowel ... ..	"	1	
9/15/75488	V1/0155		<b>STARTER MOTOR STRAP COMPLETE</b> ... ..	"	1	
9/15/75489	V1/0124		<b>STARTER MOTOR STRAP COMPLETE</b> ... ..	"	1	
9/15/75487	V10170	119	Strap ... ..	"	1	
9/15/75486	V10139	120	Strap ... ..	"	1	
9/15/70015	Z47007	121	Pin ... ..	"	1	
9/15/75485	Z1/47012	122	Pin ... ..	"	2	
9/15/75475	Z14/30710	123	Bolt, Special, $\frac{3}{8}$ " B.S.F. $\times 3$ " ... ..	"	2	
9/15/62930	Z32047	124	Nut, Special, $\frac{3}{8}$ " B.S.F. ... ..	"	1	
9/15/62945	Z1/30649	125	Washer, Special, $\frac{3}{4}$ " Sq., $\frac{1}{2}$ " Dia. ... ..	"	1	
9/15/75477	AB3602		<b>STARTER PINION GUARD AND BRACKET</b> <b>COMPLETE</b> ... ..	"	2	
	499-2602		Tape, P.V.C. ... ..	Not A220L	1	
9/15/75484	499-2325		Cover, Terminal ... ..	All Models	As req. 2	Use with V4410, V4424

NOTE:—For Starter Motor Cap see page A.11



OVERSIZE (OUTSIDE DIAMETER)			
B.R. Cat. No.	A.E.C. Basic Part No.	Designation	Remarks
		<b>1st STANDARD</b>	
9/15/59331	A3/14205	Bearing, Main, Centre ... ..	Top Half
9/15/59332	A3/14211	Bearing, Main, Centre ... ..	Bottom Half
9/15/59333	A4/13777	Bearing, Main, Intermediate ... ..	Top Half
9/15/59334	A4/13783	Bearing, Main, Intermediate ... ..	Bottom Half
9/15/59335	A4/13765	Bearing, Main, Front ... ..	Top Half
9/15/59336	A4/13771	Bearing, Main, Front ... ..	Bottom Half
9/15/59337	A2/14725	Bearing, Main, Rear ... ..	Top Half
9/15/59338	A2/14731	Bearing, Main, Rear ... ..	Bottom Half
		<b>2nd STANDARD</b>	
9/15/59355	A3/14206	Bearing, Main, Centre ... ..	Top Half
9/15/59356	A3/14212	Bearing, Main, Centre ... ..	Bottom Half
9/15/59357	A4/13778	Bearing, Main, Intermediate ... ..	Top Half
9/15/59358	A4/13784	Bearing, Main, Intermediate ... ..	Bottom Half
9/15/59359	A4/13766	Bearing, Main, Front ... ..	Top Half
9/15/59360	A4/13772	Bearing, Main, Front ... ..	Bottom Half
9/15/59361	A2/14726	Bearing, Main, Rear ... ..	Top Half
9/15/59362	A2/14732	Bearing, Main, Rear ... ..	Bottom Half
		<b>3rd STANDARD</b>	
9/15/59363	A3/14207	Bearing, Main, Centre ... ..	Top Half
9/15/59364	A3/14213	Bearing, Main, Centre ... ..	Bottom Half
9/15/59365	A4/13779	Bearing, Main, Intermediate ... ..	Top Half
9/15/59366	A4/13785	Bearing, Main, Intermediate ... ..	Bottom Half
9/15/59367	A4/13767	Bearing, Main, Front ... ..	Top Half
9/15/59368	A4/13773	Bearing, Main, Front ... ..	Bottom Half
9/15/59369	A2/14727	Bearing, Main, Rear ... ..	Top Half
9/15/59370	A2/14733	Bearing, Main, Rear ... ..	Bottom Half
		<b>4th STANDARD</b>	
9/15/59371	A3/14208	Bearing, Main, Centre ... ..	Top Half
9/15/59372	A3/14214	Bearing, Main, Centre ... ..	Bottom Half
9/15/59373	A4/13780	Bearing, Main, Intermediate ... ..	Top Half
9/15/59374	A4/13786	Bearing, Main, Intermediate ... ..	Bottom Half
9/15/59375	A4/13768	Bearing, Main, Front ... ..	Top Half
9/15/59376	A4/13774	Bearing, Main, Front ... ..	Bottom Half
9/15/59377	A2/14728	Bearing, Main, Rear ... ..	Top Half
9/15/59378	A2/14734	Bearing, Main, Rear ... ..	Bottom Half
		<b>5th STANDARD</b>	
9/15/59379	A3/14209	Bearing, Main, Centre ... ..	Top Half
9/15/59380	A3/14215	Bearing, Main, Centre ... ..	Bottom Half
9/15/59381	A4/13781	Bearing, Main, Intermediate ... ..	Top Half
9/15/59382	A4/13787	Bearing, Main, Intermediate ... ..	Bottom Half
9/15/59383	A4/13769	Bearing, Main, Front ... ..	Top Half
9/15/59384	A4/13775	Bearing, Main, Front ... ..	Bottom Half
9/15/59385	A2/14729	Bearing, Main, Rear ... ..	Top Half
9/15/59386	A2/14735	Bearing, Main, Rear ... ..	Bottom Half
		<b>6th STANDARD</b>	
9/15/59387	A3/14210	Bearing, Main, Centre ... ..	Top Half
9/15/59388	A3/14216	Bearing, Main, Centre ... ..	Bottom Half
9/15/59389	A4/13782	Bearing, Main, Intermediate ... ..	Top Half
9/15/59390	A4/13788	Bearing, Main, Intermediate ... ..	Bottom Half
9/15/59391	A4/13770	Bearing, Main, Front ... ..	Top Half
9/15/59392	A4/13776	Bearing, Main, Front ... ..	Bottom Half
9/15/59393	A2/14730	Bearing, Main, Rear ... ..	Top Half
9/15/59394	A2/14736	Bearing, Main, Rear ... ..	Bottom Half

B.R. Cat. No.	A.E.C. Basic Part No.	Plate Ref.	Designation	Used on	No. Req. per Engine	Remarks
			<b>ENGINE—Continued</b>	All Models		
			<b>OVERSIZE PISTONS</b> ... ..	"		
9/15/38063	A5/5527		<b>PISTON COMPLETE, WELLWORTHY</b> ...	"	6	} 0.5 m/m. Oversize
9/15/59291	A6/11539		<b>PISTON, BARE</b> ... ..	"	6	
9/15/59298	A4/11659		<b>RING, TOP GROOVE</b> ... ..	"	6	
9/15/59295	A4/11647		<b>RING, COMPRESSION</b> ... ..	"	12	
9/15/59301	A4/11645		<b>RING, SCRAPER</b> ... ..	"	12	
9/15/38064	A5/5528		<b>PISTON COMPLETE, WELLWORTHY</b> ...	"	6	
9/15/59292	A6/11540		<b>PISTON, BARE</b> ... ..	"	6	} 1.0 m/m. Oversize
9/15/59299	A4/11660		<b>RING, TOP GROOVE</b> ... ..	"	6	
9/15/59302	A4/11648		<b>RING, COMPRESSION</b> ... ..	"	12	
9/15/59296	A4/11646		<b>RING, SCRAPER</b> ... ..	"	12	
			<b>UNDERSIZE CONNECTING ROD BEARINGS</b> ... ..	"		
9/15/59245	A1/12107		<b>Bearing, 2nd Standard</b> ... ..	"	6 prs.	} Standards are in steps of 0.5 m/m.
9/15/59246	A1/12108		<b>Bearing, 3rd Standard</b> ... ..	"	6 prs.	
9/15/59247	A1/12109		<b>Bearing, 4th Standard</b> ... ..	"	6 prs.	
			<b>OVERSIZE INSERTS</b> ... ..	"		
9/15/59285	A85073		Insert, 0.010" ... ..	"	} 6	} Inlet Valves
9/15/59286	A85074		Insert, 0.020" ... ..	"		
9/15/59281	A85093		Insert, 0.010" ... ..	"	} 6	} Exhaust Valves
9/15/59282	A85071		Insert, 0.020" ... ..	"		
9/15/40319	ABO616		<b>ENGINE OVERHAUL GASKET SET COMPLETE</b> ... ..	"		
9/15/40320	ABO620		<b>ENGINE TOP OVERHAUL GASKET SET COMPLETE</b> ... ..	"		
			<b>NOTE:—For Gudgeon Pin and Circlip see page A.9</b>			

B.R. Cat. No.	A.E.C. Basic Part No.	Plate Ref.	Designation	Used on	No. Req. per Engine	Remarks	
9/15/62910	78-752		<b>ENGINE—Continued</b>	All Models			
9/15/62900	S1/13319		<b>OIL COOLER COMPLETE, SERCK No. C8879/I</b>	"	1		
9/15/62935	V1/0191		Adaptor ... ..	"	2	Oil Cooler	
9/15/62942	V1/0190		<b>OIL COOLER STRAP COMPLETE</b>	"	1		
9/15/70015	Z47007		<b>STRAP COMPLETE WITH PIN</b>	"	1		
9/15/62950	342-54		Pin ... ..	"	2		
	107-442		Belting, $\frac{1}{8}'' \times 2''$ ... ..	"	8 $\frac{1}{4}''$		
9/15/62902	Z15/30773		Rivet, Bifurcated, Brass, $\frac{1}{8}'' \times \frac{5}{16}''$ ... ..	"	2		
9/15/62930	Z32047		Bolt, Special, $\frac{3}{8}''$ B.S.F. $\times 2\frac{7}{8}''$ ... ..	"	1	} Strap	
9/15/62945	Z1/30649		Nut, Special, $\frac{3}{8}''$ B.S.F. ... ..	"	1		
9/15/62951	A1/24452		Washer, Special, $\frac{3}{4}''$ Sq., $\frac{1}{32}''$ dia. ... ..	"	2	} Water Pump to Oil Cooler	
	332-86		<b>Hose, Flexible, 2" I/D. <math>\times 2\frac{3}{4}''</math></b> ... ..	"	1		
			Clip, Jubilee, No. 3 ... ..	"	2		
9/15/58210	373-368		<b>SPEEDOMETER GENERATOR COMPLETE, EVERITT EDGECUMBE TYPE "B", DRG. 14925A</b>	A220L	1	With A.E.C. Pulley	
9/15/58204	Z2/46404		Packing ... ..	"	1	} Generator	
9/15/58202	A70305		Bracket ... ..	"	1		
9/15/58196	Z12/30761		Bolt, $\frac{5}{16}''$ B.S.F. $\times 2\frac{1}{8}''$ ... ..	"	4		
	Z2/32047		Nut, Plain, $\frac{5}{16}''$ B.S.F. ... ..	"	4		
	Z4/30699		Washer, Steel, Bright, $\frac{5}{16}''$ ... ..	"	4		
	Z4/30692		Washer, Grover, $\frac{5}{16}''$ ... ..	"	4		
9/15/58242	Z6/30610		Packing Washer ... ..	"	3		
9/15/58205	A21787		Pulley ... ..	"	1		
9/15/58195	A13560		<b>Belt, Goodyear...</b> ... ..	"	1		
9/15/58220	373-414		<b>SPEEDOMETER GENERATOR COMPLETE, SMITHS TYPE MDG3...</b>	A220S/W/Y	1		
	90-164		Locknut, $\frac{5}{16}''$ B.S.F., "Simmonds" Nyloc Type NP-F106	"	3	} Generator	
	Z4/30699		Washer, Steel, Bright, $\frac{5}{16}''$ ... ..	"	3		
9/15/58247	A1/15400		<b>Bevel Wheel, Spiral</b> ... ..	"	1		To mesh with A15466
9/15/58203	156-175		Key, $\frac{3}{16}'' \times \frac{3}{16}'' \times \frac{3}{8}''$ ... ..	"	1		
	86-38		Nut, Slotted, $\frac{5}{8}''$ B.S.F. ... ..	"	1		
	100-14		Split Pin, $\frac{1}{8}'' \times 1\frac{1}{2}''$ ... ..	"	1		
9/15/58206	Z3/46593		Shim, 0.005" ... ..	"	1		
9/15/58207	Z3/46593A		Shim, 0.010" ... ..	"	1		As req.
9/15/58208	Z3/46593B		Shim, 0.030" ... ..	"	1		
9/15/56980	81-2385		<b>OIL PRESSURE SWITCH COMPLETE, SMITHS No. X80808/31/10</b>	A220L/S/Y	1		} 2 off on A220W
9/15/56984	Z44795		Washer, Special ... ..	"	1		
			<b>NOTE:—For Oil Cooler Bracket on A220S/W see page A.19. For Oil Cooler Support on A220L/Y see page A.23.</b>				

B.R. Cat. No.	A.E.C. Basic Part No.	Plate Ref.	Designation	Used on	No. Req. per Engine	Remarks
9/15/46820	78-706		<b>ENGINE ACCESSORIES</b>			
9/15/46821	78-709		<b>FUEL FILTER COMPLETE, C.A.V. TYPE</b> <b>BF11PS590</b> ... ..	} DTO1/B, 1/11B	1	
9/15/46822	78-598		<b>Element Complete, Felt and Cloth, C.A.V. No.</b> <b>7031-102</b> ... ..		1	
9/15/46823	78-729		<b>FUEL FILTER COMPLETE, C.A.V. TYPE</b> <b>BF11BS599</b> ... ..		1	
9/15/46824	78-591		<b>Element Complete, Cloth C.A.V. No. 7019B-</b> <b>68</b> ... ..		1	
9/15/46825	78-722		Vent Valve, C.A.V. No. 7019-204 ... ..		1	
9/15/46826	78-713		Adaptor, C.A.V. No. 7031-18C ... ..		1	
9/15/46827	138-217		Washer, C.A.V. No. 5339A-310 ... ..		1	
9/15/46827	138-217		Washer, Copper, 14 x 18 x 2 m/m., Special ... ..		1	
9/15/46827	78-739		<b>FUEL FILTER COMPLETE, C.A.V. TYPE</b> <b>2F3-16</b> ... ..		1	
9/75/2070	78-784		<b>Element Complete, Paper, C.A.V. No. 7111-</b> <b>44</b> ... ..		} DTO1/3, 1/5, 1/6, 1/7, 1/11, 1/11B, 1/20	
9/15/46822	78-598		<b>FUEL FILTER COMPLETE, C.A.V. TYPE</b> <b>BF11BS599</b> ... ..	1		
9/15/46823	78-729		<b>Element Complete, Cloth, C.A.V. No. 7019B-</b> <b>68</b> ... ..	1		
9/15/46828	78-655		<b>FUEL SHUT OFF COCK COMPLETE BEN-</b> <b>TON AND STONE No. B1667A</b> ... ..	} DTO1/3, 1/6, 1/20	1	
9/15/46618	132-3		Nut, Union, Special ... ..	} DTO1/20	6	} Fuel Filters
9/15/46809	130-17		Cone, Union, Special ... ..		6	
		<b>A9</b>				
9/15/46829	R1468		<b>FUEL PUMP LEVER COMPLETE</b> ... ..	All Models	1	} Not Supplied as Spares
	R2/11286	63	Lever ... ..	"	1	
9/15/46830	Z2/10299	64	Bush ... ..	"	1	
9/15/46831	39-3	65	Bolt, $\frac{1}{4}$ " B.S.F. x 1", Drilled, Special ... ..	"	1	
	85-32	66	Nut, Plain, $\frac{1}{4}$ " B.S.F. ... ..	"	1	
	135-32	67	Washer, Grover, $\frac{1}{4}$ " ... ..	"	1	
9/15/45516	Z45298	68	Spring, Pull Off ... ..	"	1	



B.R. Cat. No.	A.E.C. Basic Part No.	Plate Ref.	Designation	Used on	No. Req. per Engine	Remarks
9/15/58030	78-766		<b>ENGINE ACCESSORIES—Continued</b>			
			<b>AIR FILTER COMPLETE, AIR MAZE, DRG. No. A2321</b> ... ..		1	
9/15/58072	Z14530		Spigot ... ..		1	Air Filter
9/15/58028	A1/77122		Elbow ... ..		1	
9/15/58025	39-7		Bolt, $\frac{1}{4}$ " B.S.F. $\times$ $1\frac{1}{2}$ ", Special ... ..		1	
9/15/58026	39-19		Bolt, $\frac{1}{4}$ " B.S.F. $\times$ 3", Special ... ..		2	Air Filter
	85-32		Nut, Plain, $\frac{1}{4}$ " B.S.F. ... ..		3	Elbow
	135-2		Washer, Thackray, $\frac{1}{4}$ " ... ..		3	
9/15/58050	Z1003		<b>CLAMP COMPLETE</b> ... ..		1	
9/15/58073	AB2105		<b>FIXING STUD COMPLETE</b> ... ..		1	
9/15/58074	Z8/30543		Stud, Special, $16\frac{7}{16}$ " O/All ... ..	DT01/B, 1/2, 1/3,	1	
9/15/58075	Z2/32075		Nut, Special, Knurled ... ..	1/5, 1/6, 1/7, 1/11,	1	Air Filter
9/15/58076	Z2/45496		Spring ... ..	1/11B, 1/20	1	
	134-5		Washer, Plain, $\frac{7}{16}$ " ... ..		1	
9/15/58077	Z43972		<b>Washer, Sealing</b> ... ..		1	
9/15/58060	78-757		<b>AIR PRE-CLEANER COMPLETE, A.C. DELCO No. 1579221</b> ... ..		1	
	332-97		Clip, Jubilee, No. 4 ... ..		1	Air Pre-Cleaner
9/15/58056	A1/77152		Adaptor ... ..		1	Air Filter to Pre-Cleaner
9/15/58061	Z43973		Joint, Special, $9\frac{7}{8}$ " $\times$ $4\frac{3}{4}$ " $\times$ $\frac{1}{16}$ " ... ..		1	
9/15/30582	121-103		Setscrew, $\frac{1}{4}$ " B.S.F. $\times$ $\frac{5}{8}$ " ... ..		12	
	85-32		Nut, Plain, $\frac{1}{4}$ " B.S.F. ... ..		12	Adaptor
	135-32		Washer, Grover, $\frac{1}{4}$ " ... ..		12	
9/15/63759	216-151		Tube, Steel, 3" O/D. $\times$ 16 G. 1/D. ... ..	DT01/B, 1/2, 1/3, 1/5, 1/6, 1/7, 1/11, 1/11B	6' 0"	Air Filter to Engine
9/15/58085	A1/24464		<b>Hose, Flexible, 3" 1/D. <math>\times</math> 3<math>\frac{1}{2}</math>"</b> ... ..	DT01/B, 1/2, 1/5,	2	Air Filter to Engine
	332-97		Clip, Jubilee, No. 4 ... ..	1/7, 1/11, 1/11B	4	Engine
9/15/58086	A1/24492		<b>Hose, Flexible, 3" 1/D. <math>\times</math> 1' 5"</b> ... ..	DT01/3, 1/6, 1/20	2	Air Filter to Engine
	332-128		Clip, Jubilee, No. 4X ... ..		4	Engine

railcar.co.uk

B.R. Cat. No.	A.E.C. Basic Part No.	Plate Ref.	Designation	Used on	No. Req. per Engine	Remarks
9/15/32081	V7914		<b>ENGINE LIFTING GEAR FLANGE COMPLETE, SCREW HOLE <math>\frac{49}{64}</math>" DIA.</b>	DT01/B, 1/2, 1/5, 1/7, 1/11, 1/11B, 1/20	1	Frame Bracket
9/15/32175	V7904		<b>FLANGE COMPLETE, SCREW HOLE <math>\frac{33}{32}</math>" DIA.</b>	DT01/3, 1/6	1	Frame Bracket
9/15/32073	V7915		<b>SUPPORT COMPLETE</b> ... ..	DT01/B, 1/2, 1/5, 1/7, 1/11, 1/11B, 1/20	1	Pinion Bracket
9/15/32176	V7911		<b>SUPPORT COMPLETE</b> ... ..	DT01/3, 1/6	1	Pinion Bracket
9/15/34270	43-97		Bolt, $\frac{1}{2}$ " B.S.F. x $1\frac{3}{4}$ ", Drilled	DT01/B, 1/2, 1/5, 1/7, 1/11, 1/11B, 1/20	1	} Support Bracket
9/15/32177	43-95		Bolt, $\frac{1}{2}$ " B.S.F. x $1\frac{1}{2}$ ", Drilled, Special	DT01/3, 1/6	1	
9/15/34270	43-97		Bolt, $\frac{1}{2}$ " B.S.F. x $1\frac{3}{4}$ ", Drilled	DT01/B, 1/2, 1/5, 1/7, 1/11, 1/11B, 1/20	2	
	85-36		Nut, Plain, $\frac{1}{2}$ " B.S.F.	"	3	
	136-34		Lockwasher, $\frac{17}{32}$ "	"	2	
	135-36		Washer, Grover, $\frac{1}{2}$ "	"	1	
9/15/32071	13-14		<b>Ball, Thrust, <math>\frac{3}{8}</math>" Dia.</b>	"	1	
9/15/32089	V38113		Pinion, Chain	"	2	
9/15/32086	V38114		Distance Piece, 0-290"	"	2	
9/15/32087	V38125		Distance Piece, 0-500"	"	1	
9/15/32088	V38119		Pivot Pin	"	1	
	85-36		Nut, Plain, $\frac{1}{2}$ " B.S.F.	"	1	} Chain Pinion
	134-6		Washer, Plain, $\frac{1}{2}$ "	"	1	
	135-36		Washer, Grover, $\frac{1}{2}$ "	"	1	
9/15/99039	81-312		Lubricator, Tecalemit No. 4657	"	1	
9/15/32084	V38130		Nut, Lifting	"	1	} $\frac{3}{8}$ " B.S.F.
9/15/32092	V7912		<b>GUIDE ROD COMPLETE</b> ...	DT01/B, 1/2, 1/5, 1/7, 1/11, 1/11B, 1/20	1	
9/15/32178	V7906		<b>GUIDE ROD COMPLETE</b> ...	DT01/3, 1/6	1	} Guide Rod
	90-35		Locknut, $\frac{1}{2}$ " B.S.F.	DT01/B, 1/2, 1/3, 1/5, 1/6, 1/7, 1/11, 1/11B, 1/20	2	
	85-36		Nut, Plain, $\frac{1}{2}$ " B.S.F.	"	1	
	135-36		Washer, Grover, $\frac{1}{2}$ "	"	1	
9/15/32094	V7916		<b>LIFTING SCREW COMPLETE</b> ... ..	DT01/B, 1/2, 1/5, 1/7, 1/11, 1/11B, 1/20	1	
9/15/32180	V7908		<b>LIFTING SCREW COMPLETE</b> ... ..	DT01/3, 1/6	1	} Lifting Screw
9/15/32079	V38104		Collar, Retaining...	DT01/B, 1/2, 1/3, 1/5, 1/6, 1/7, 1/11, 1/11B, 1/20	1	
9/15/32093	119-32		Grub Screw, $\frac{1}{4}$ " B.S.F. x $\frac{3}{8}$ "	"	1	

B.R. Cat. No.	A.E.C. Basic Part No.	Plate Ref.	Designation	Used on	No. Req. per Engine	Remarks
9/15/32091	V38126		<b>ENGINE LIFTING GEAR</b> —Continued Anchor Ring ... ..	DT01/B, 1/2, 1/3, 1/5, 1/6, 1/7, 1/11, 1/11B, 1/20	2	Lifting Chain
9/15/32072	Z9/30778 86-36 100-9		Bolt, Special, $\frac{1}{2}$ " B.S.F. $\times 3\frac{1}{2}$ ", Drilled ... ..	"	1	} Anchor Ring
			Nut, Slotted, $\frac{1}{2}$ " B.S.F. ... ..	"	1	
			Split Pin, $\frac{3}{8}$ " $\times 1\frac{1}{4}$ " ... ..	"	1	
9/15/32080	V38131 85-35 135-35		Eyebolt, Special ... ..	"	2	} Anchor Eyebolt
			Nut, Plain, $\frac{7}{16}$ " B.S.F. ... ..	"	2	
			Washer, Grover, $\frac{7}{16}$ " ... ..	"	2	
9/15/32078	V38140		<b>Chain, Lifting, Renold</b> ... ..	DT01/B, 1/2, 1/5, 1/7, 1/11, 1/11B, 1/20	2	No. 110,046, Pitch 50
<del>9/15/32081</del>	V38107		<b>Chain, Lifting, Renold</b> ... ..	DT01/3, 1/6	2	No. 110,046, Pitch 46
9/15/32090	V38141		Plate, ... ..	DT01/B, 1/2, 1/5, 1/7, 1/11, 1/11B, 1/20	1	Frame Stiffener
9/15/32085	V38142		Packing, Length $4\frac{3}{16}$ ", Holes Offset ... ..	"	2	Pinion Bracket
9/15/32182	V38150		Packing, Length $4\frac{1}{4}$ " ... ..	DT01/3, 1/6	2	Lifting Gear
9/15/32077	V38148		Bracket, Support... ..	DT01/B, 1/2, 1/3, 1/5, 1/6, 1/7, 1/11, 1/11B, 1/20	1	Outer

railcar.co.uk

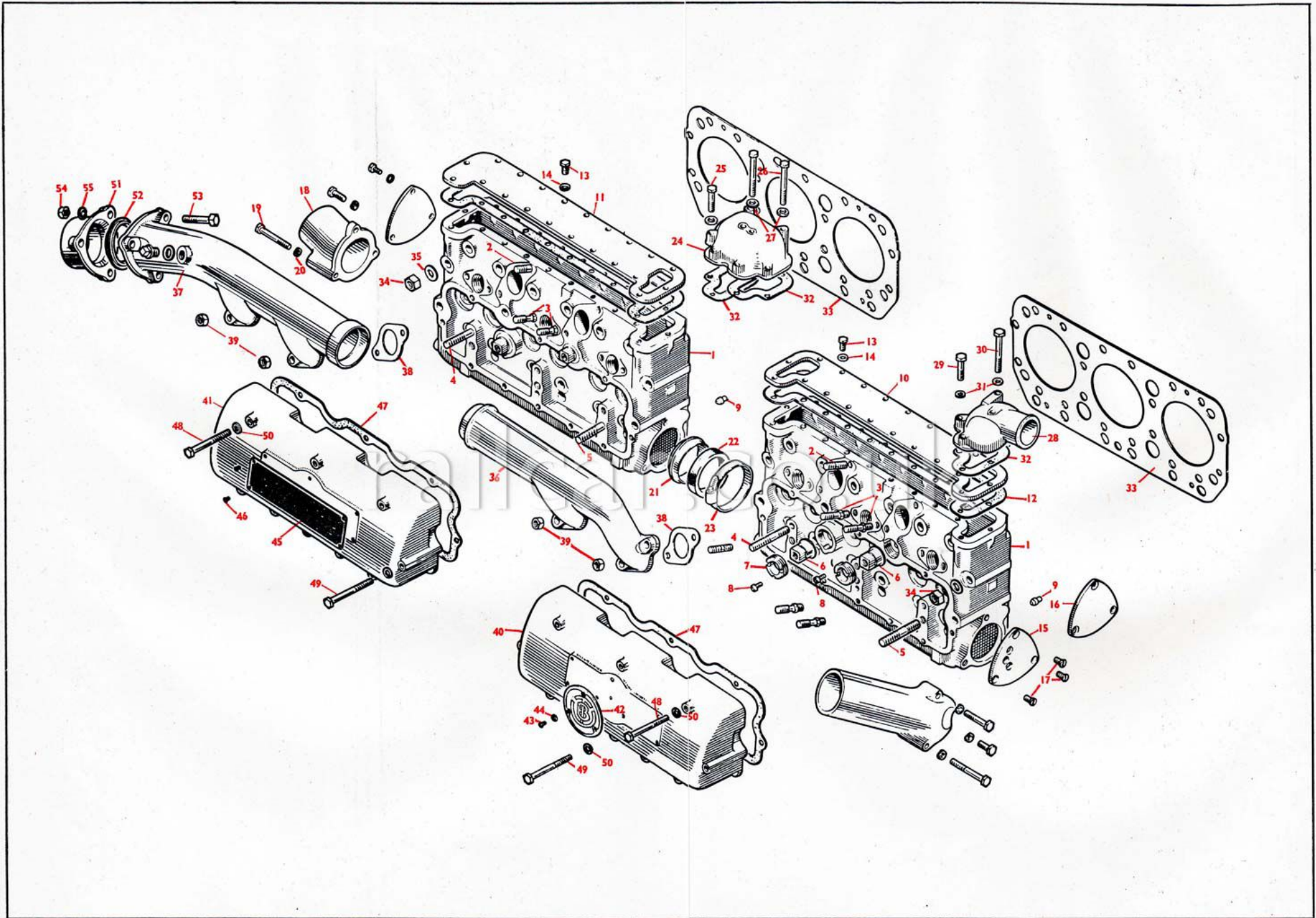
B.R. Cat. No.	A.E.C. Basic Part No.	Plate Ref.	Designation	Used on	No. Req. per Engine	Remarks
9/15/32109	Y10271		<b>ENGINE SUSPENSION</b> Bracket ... ..	DT01/B, 1/2, 1/3, 1/5, 1/6, 1/7, 1/11, 1/11B	1	Rear Engine Casing
9/15/32121	Z43962		Joint ... ..	"	1	
9/15/32131	A81931		Rubber Unit, R.H. ... ..	"	2	
9/15/32130	A81932		Rubber Unit, L.H. ... ..	"	2	
9/15/32114	Y23505		Distance Piece, 2 Holes ... ..	"	2	
9/15/32115	Y23506		Distance Piece, 1 Hole ... ..	"	2	
9/15/32142	Z15/30711		Setscrew, Special, $\frac{1}{2}$ " B.S.F. $\times$ $3\frac{1}{8}$ ", Hd. Drilled ... ..	"	4	
9/15/32143	Z15/30712		Setscrew, Special, $\frac{1}{2}$ " B.S.F. $\times$ $1\frac{3}{4}$ ", Hd. Drilled ... ..	"	2	
9/15/32100	Z8/30736		Wire, Locking, Iron, 18 S.W.G. $\times$ 18" ... ..	"	2	
	86-36		Bolt, Special, $\frac{1}{2}$ " B.S.F. $\times$ $1\frac{3}{8}$ ", Drilled ... ..	"	4	
	100-11		Nut, Slotted, $\frac{1}{2}$ " B.S.F. ... ..	"	4	
9/15/32151	Z50607		Split Pin, $\frac{3}{32}$ " $\times$ 1" ... ..	"	1	
9/15/32150	Z50608		Oil Shield, R.H. ... ..	"	1	
9/15/32157	Y1/2841		Oil Shield, L.H. ... ..	"	1	
9/15/32183	Y1/2847		<b>REAR SUPPORT TUBE COMPLETE WITH BRACKETS</b> ... ..	DT01/B, 1/2, 1/5, 1/7, 1/11, 1/11B	1	
9/15/32184	Y1/2850		<b>REAR SUPPORT TUBE COMPLETE WITH BRACKETS</b> ... ..	DT01/3	1	
9/15/32112	A88024		<b>REAR SUPPORT TUBE COMPLETE WITH BRACKETS</b> ... ..	DT01/6	1	Rear Support Tube
9/15/32140	Z15/30733		Bush, Metalastik, No. 13/657 ... ..	DT01/B, 1/2, 1/3, 1/5, 1/6, 1/7, 1/11, 1/11B	1	
	86-38		Pin ... ..	"	1	
	100-16		Nut, Slotted, $\frac{5}{16}$ " B.S.F. ... ..	"	1	
9/15/32110	Y20707		Split Pin, $\frac{1}{8}$ " $\times$ $1\frac{3}{8}$ " ... ..	"	1	
9/15/32153	Y1/25611		Bracket ... ..	"	1	
9/15/32101	Z8/30722		Shim ... ..	"	As req.	
			Bolt, Special, $\frac{1}{2}$ " B.S.F. $\times$ $1\frac{1}{2}$ ", Drilled ... ..	DT01/B, 1/2, 1/3, 1/5, 1/7, 1/11, 1/11B	3	
9/15/32185	Z14/30794		Bolt, Special, $\frac{1}{2}$ " B.S.F. $\times$ $1\frac{5}{8}$ ", Drilled ... ..	DT01/6	3	
	86-36		Nut, Slotted, $\frac{1}{2}$ " B.S.F. ... ..	DT01/B, 1/2, 1/3, 1/5, 1/6, 1/7, 1/11, 1/11B	3	
9/15/32156	Y1/26159		Split Pin, $\frac{3}{32}$ " $\times$ $1\frac{1}{8}$ " ... ..	DT01/B, 1/2, 1/5, 1/6, 1/7, 1/11, 1/11B	3	
			Stiffener ... ..	"	1	Engine Member, R.H.
9/15/32155	Y1/26160		Stiffener ... ..	DT01/B, 1/2, 1/5, 1/7, 1/11, 1/11B	1	Engine Member, L.H.



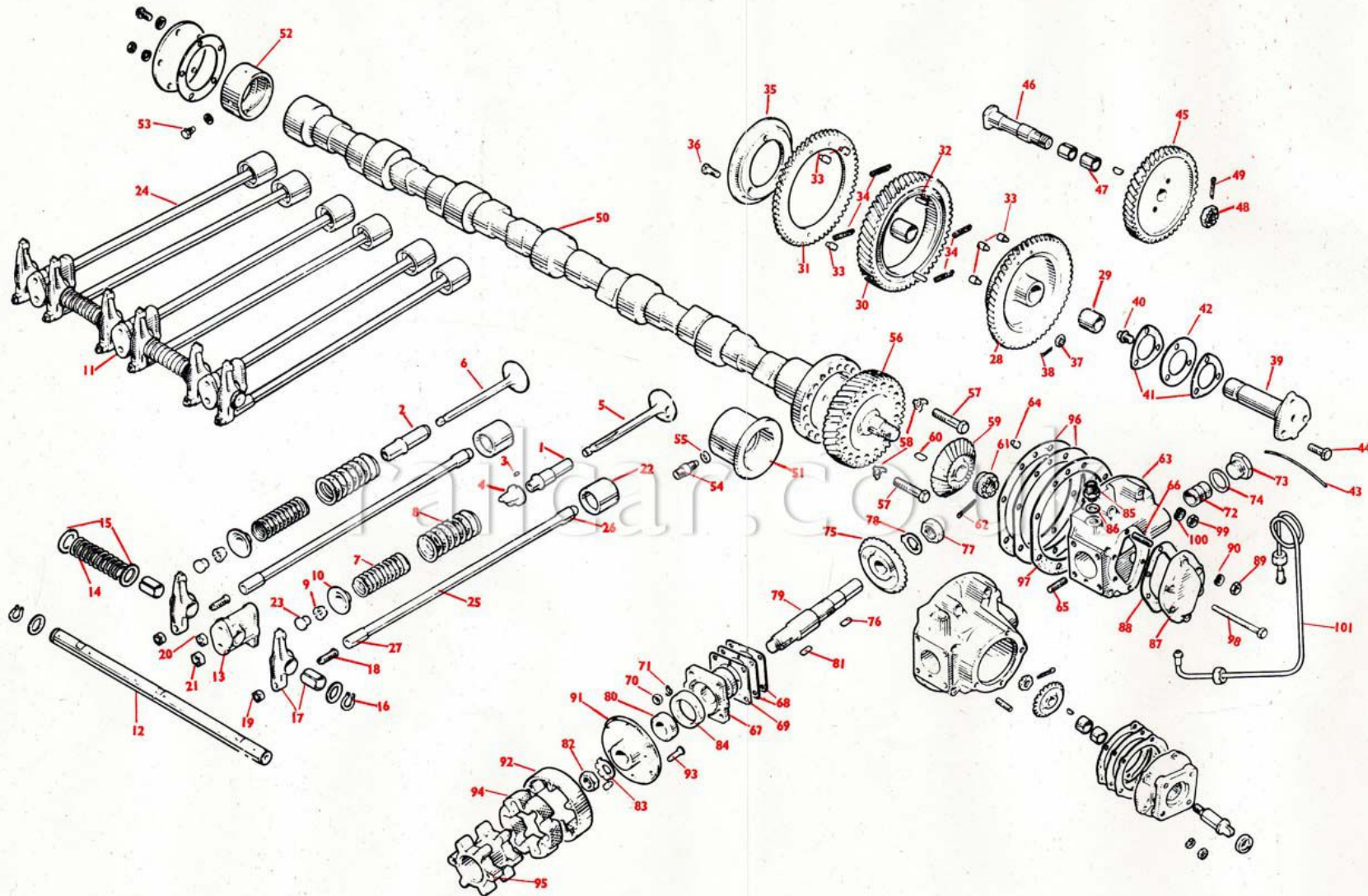
B.R. Cat. No.	A.E.C. Basic Part No.	Plate Ref.	Designation	Used on	No. Req. per Engine	Remarks
9/15/32108	Y10270		<b>ENGINE SUSPENSION</b> —Continued Bracket, Frame ... ..	DT01/B, 1/2, 1/3, 1/5, 1/6, 1/7, 1/11, 1/11B	1	R.H.—Engine Rear
9/15/32112	A88024		<b>Bush, Metalastik, No. 13/657</b> ... ..	"	2	} Frame Bracket
9/15/32120	Z47839		Eyebolt, Special ... ..	"	1	
	90-38		Locknut, $\frac{3}{8}$ " B.S.F. ... ..	"	1	
9/15/32113	A88026		<b>Bush, Silent Bloc, Special</b> ... ..	"	1	
9/15/32124	Y9606		<b>LOCATING LINK COMPLETE</b> ... ..	"	1	
9/15/32123	Y30412		Link, Locating ... ..	"	1	} Frame Bracket
9/15/32102	Z15/30747		Bolt, Special, $\frac{7}{16}$ " B.S.F. $\times 2\frac{3}{8}$ " Hd., Drilled ... ..	"	2	
	219-24		Wire, Locking, Iron, 18 S.W.G. ... ..	"	9"	} Support Link
9/15/32122	Y30428		Support, Link ... ..	"	2	
9/15/32103	Z15/30777		Bolt, Special, $\frac{5}{8}$ " B.S.F. $\times 2\frac{3}{4}$ " Drilled ... ..	"	2	
	86-38		Nut, Slotted, $\frac{5}{8}$ " B.S.F. ... ..	"	2	} Support Link
	135-38		Washer, Grover, $\frac{5}{8}$ " ... ..	"	2	
	100-16		Split Pin, $\frac{1}{8}$ " $\times 1\frac{3}{8}$ " ... ..	"	2	
9/15/32104	Z9/30777		Bolt, Special, $\frac{5}{8}$ " B.S.F. $\times 2\frac{3}{4}$ " Drilled ... ..	DT01/B, 1/2, 1/3, 1/5, 1/7, 1/11, 1/11B	4	} Frame Bracket (R.H. Rear)
9/15/32101	Z8/30722		Bolt, Special, $\frac{1}{2}$ " B.S.F. $\times 1\frac{1}{2}$ " Drilled ... ..	DT01/6	4	
	86-36		Nut, Slotted, $\frac{1}{2}$ " B.S.F. ... ..	DT01/B, 1/2, 1/3, 1/5, 1/6, 1/7, 1/11, 1/11B	4	} Engine Front
	100-9		Split Pin, $\frac{3}{32}$ " $\times 1\frac{1}{4}$ " ... ..	"	4	
9/15/35612	Y10273		Bracket, Frame ... ..	"	1	} Front Bracket
9/15/35670	Z5/30683		Washer, Clamp, Special... ..	"	1	
9/15/35607	Z15/30713		Bolt, Special, $\frac{9}{16}$ " B.S.F. $\times 3\frac{1}{8}$ " Drilled ... ..	"	1	
	86-37		Nut, Slotted, $\frac{9}{16}$ " B.S.F. ... ..	"	1	} Setscrew Plate
	100-14		Split Pin, $\frac{1}{8}$ " $\times 1\frac{1}{2}$ " ... ..	"	1	
9/15/32141	Y20711		Setscrew Plate ... ..	DT01/B, 1/2, 1/5, 1/7, 1/11, 1/11B	1	} Setscrew Plate
9/15/32186	Y20708		Setscrew Plate ... ..	DT01/6	2	
9/15/32144	Z15/30714		Setscrew, Special, $\frac{5}{16}$ " B.S.F. $\times 2\frac{3}{8}$ " ... ..	DT01/B, 1/2, 1/3, 1/5, 1/6, 1/7, 1/11, 1/11B	2	} Setscrew Plate
9/15/32145	Z15/30715		Setscrew, Special, $\frac{5}{8}$ " B.S.F. $\times 3\frac{3}{8}$ " ... ..	"	1	
	219-24		Wire, Locking, Iron, 18 S.W.G. ... ..	"	17"	
	135-38		Washer, Grover, $\frac{5}{8}$ " ... ..	"	3	
9/15/32099	40-35		Bolt, $\frac{5}{16}$ " B.S.F. $\times 1\frac{3}{8}$ " ... ..	DT01/B, 1/2, 1/5, 1/7, 1/11, 1/11B	2	
	85-33		Nut, Plain, $\frac{5}{16}$ " B.S.F. ... ..	"	2	
	135-33		Washer, Grover, $\frac{5}{16}$ " ... ..	"	2	
9/15/32187	114-19		Rivet, Snap Hd., $\frac{5}{16}$ " $\times 1\frac{1}{4}$ ", Mild Steel... ..	"	2	

B.R. Cat. No.	A.E.C. Basic Part No.	Plate Ref.	Designation	Used on	No. Req. per Engine	Remarks
9/15/32098	Y31712		<b>ENGINE SUSPENSION</b> —Continued Buffer Angle ... ..	DTOI/B, 1/2, 1/5, 1/7, 1/11, 1/11B	1	Torque Reaction
9/15/32188	Y31711		Buffer Angle ... ..	DTOI/3, 1/6	1	Torque Reaction
9/15/32111	Y8201		<b>RUBBER BUFFER COMPLETE</b> ... ..	DTOI/B, 1/2, 1/3, 1/5, 1/6, 1/7, 1/11, 1/11B	2	
9/15/32154	Y29807		Packing ... ..	"	} As req.	To Angle
9/15/32152	Y29806		Shim ... ..	"		
9/15/32105	Z12/30725		Bolt, $\frac{5}{16}$ " B.S.F. $\times \frac{7}{8}$ " ... ..	"		
	Z2/32047		Nut, Plain, $\frac{5}{16}$ " ... ..	"		
	Z4/30692		Washer, Grover, $\frac{5}{16}$ " ... ..	"		

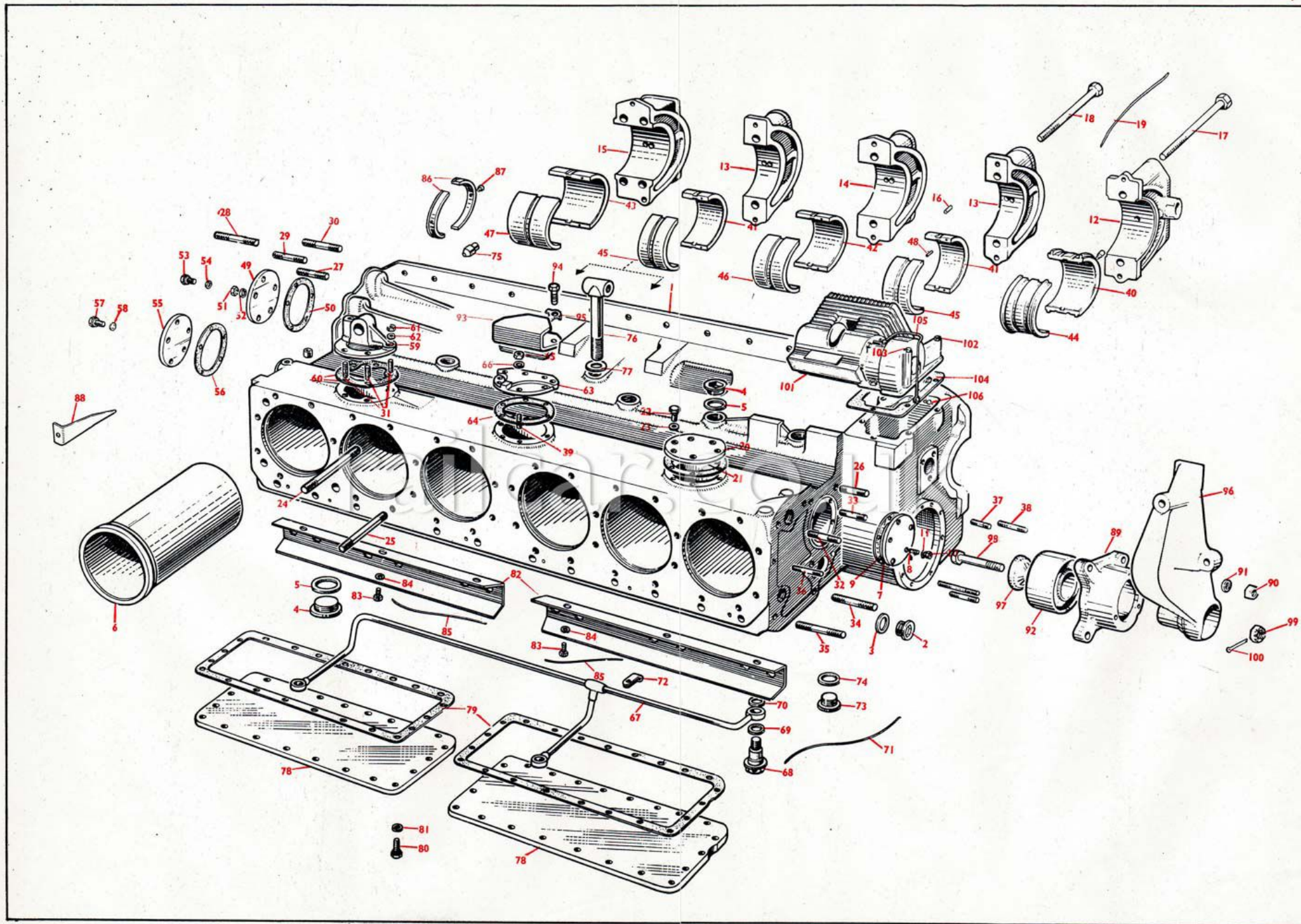
railcar.co.uk





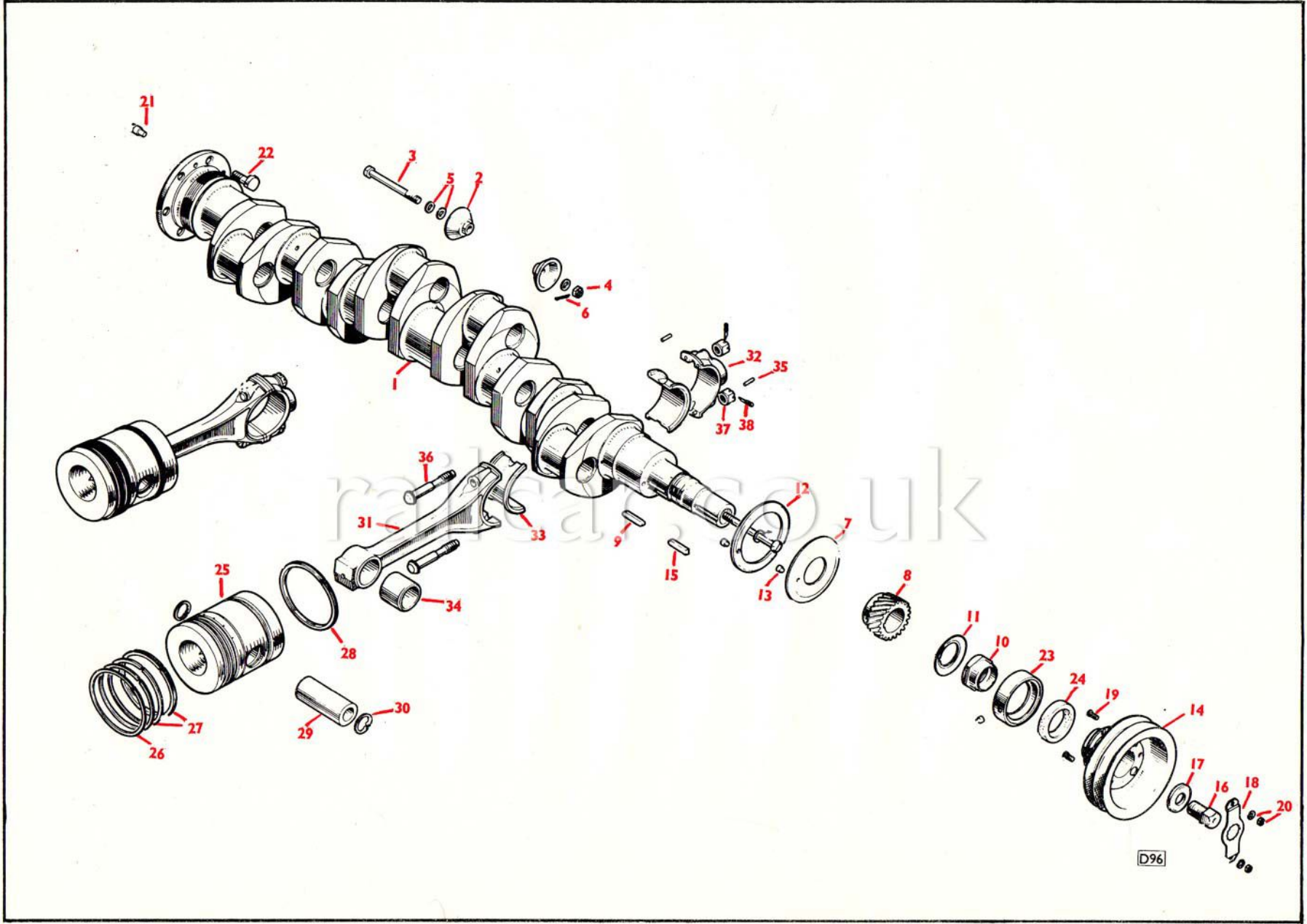




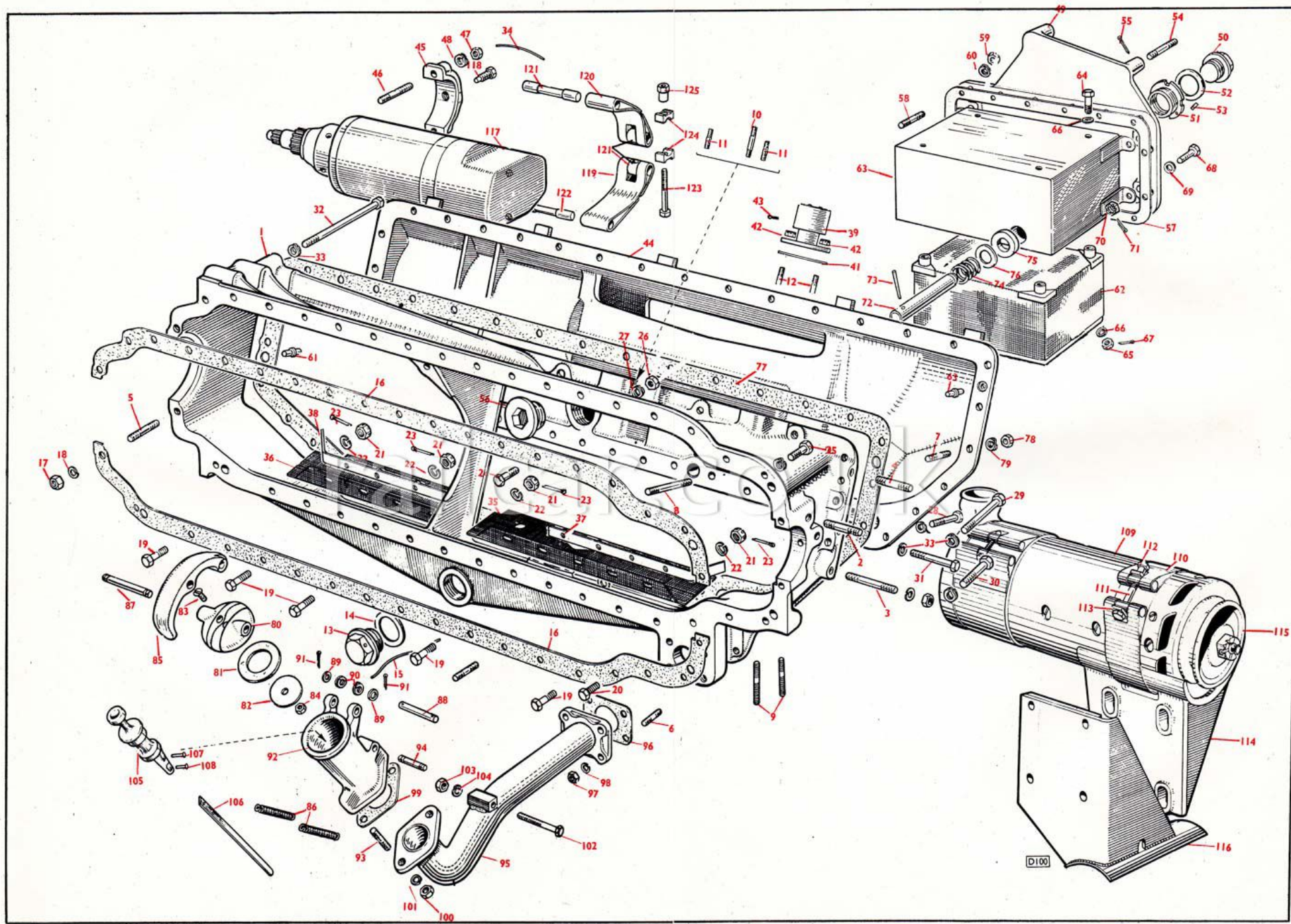


# Plate A.4.

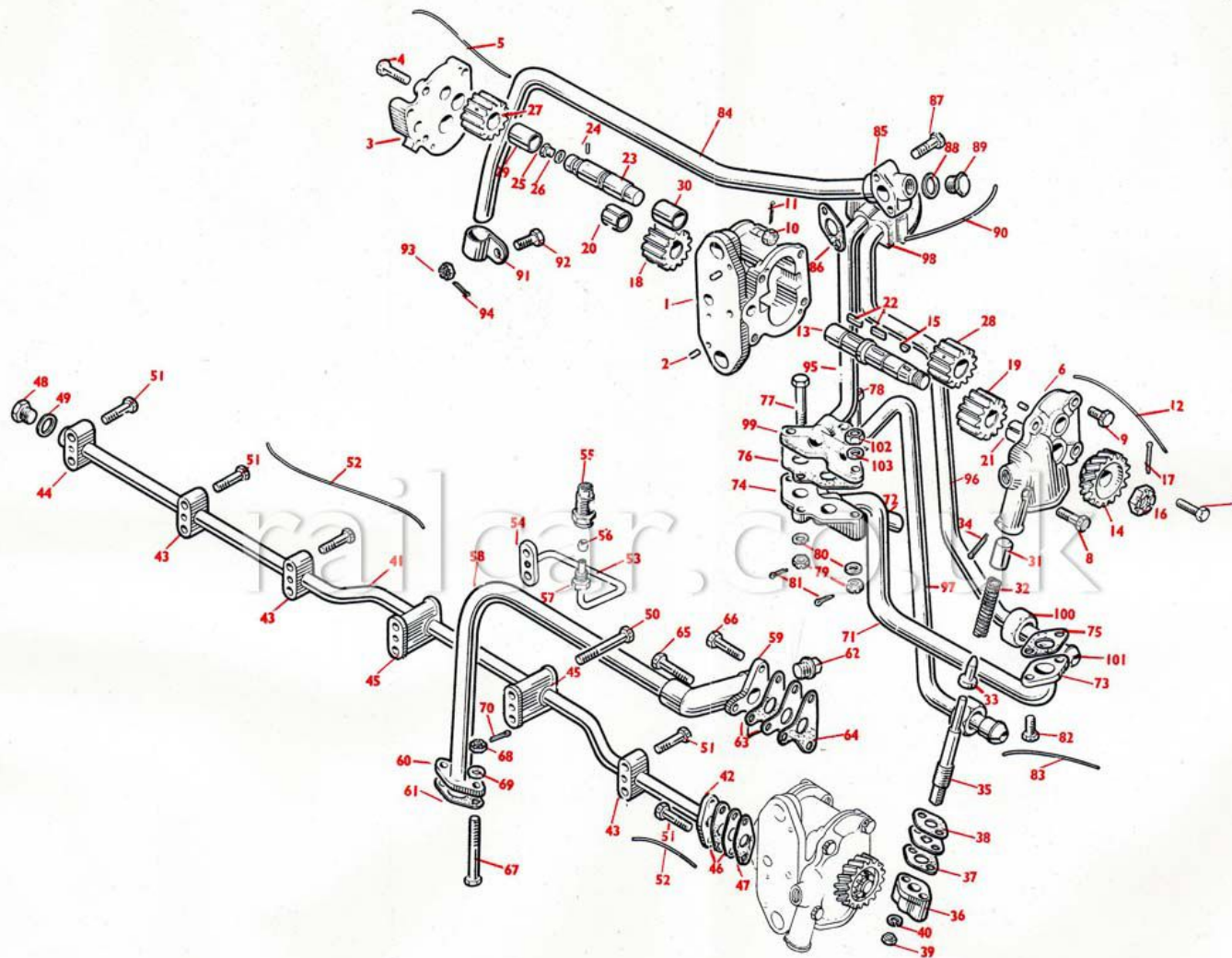
## CRANKSHAFT, CONNECTING RODS AND PISTONS

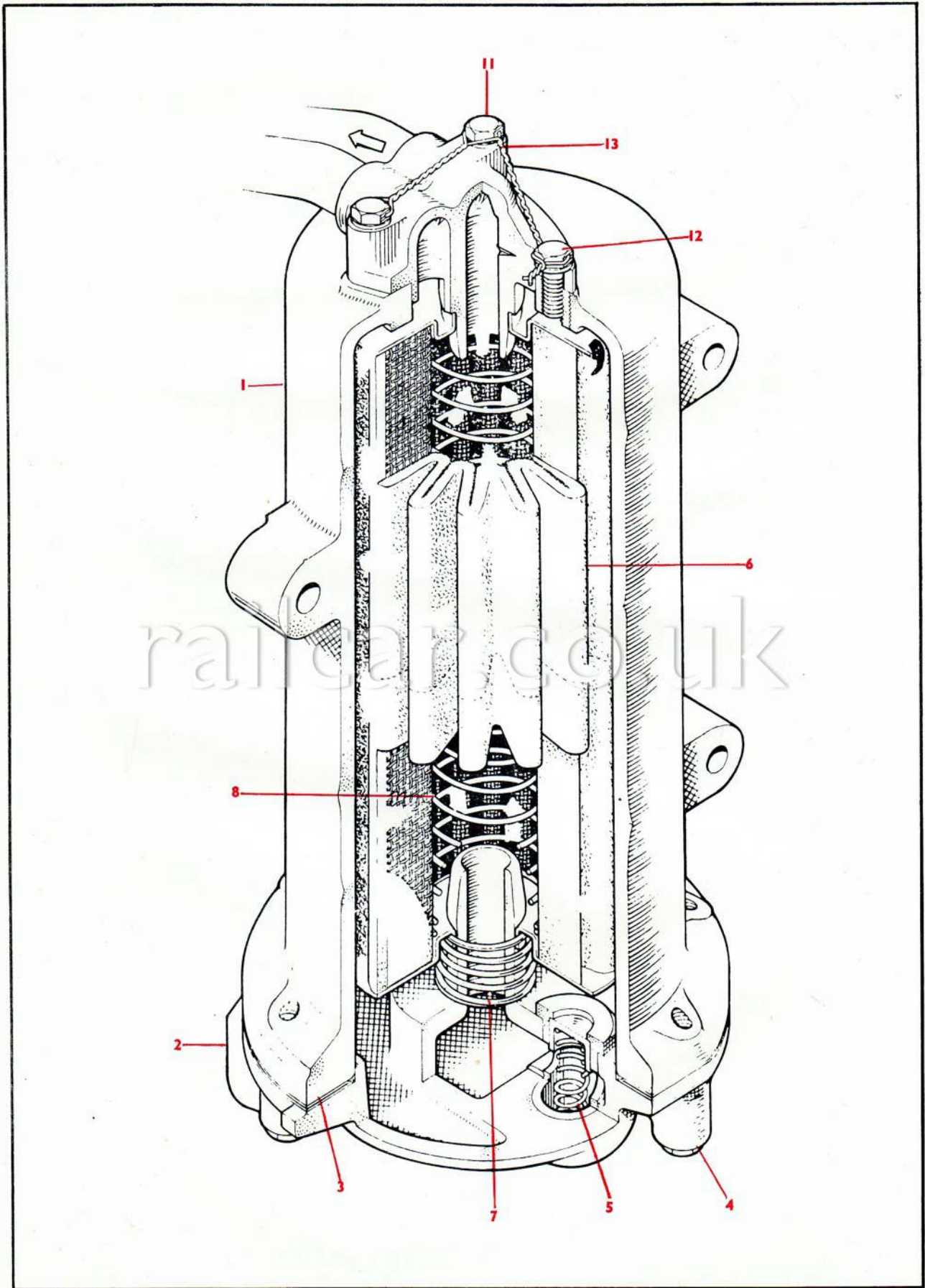




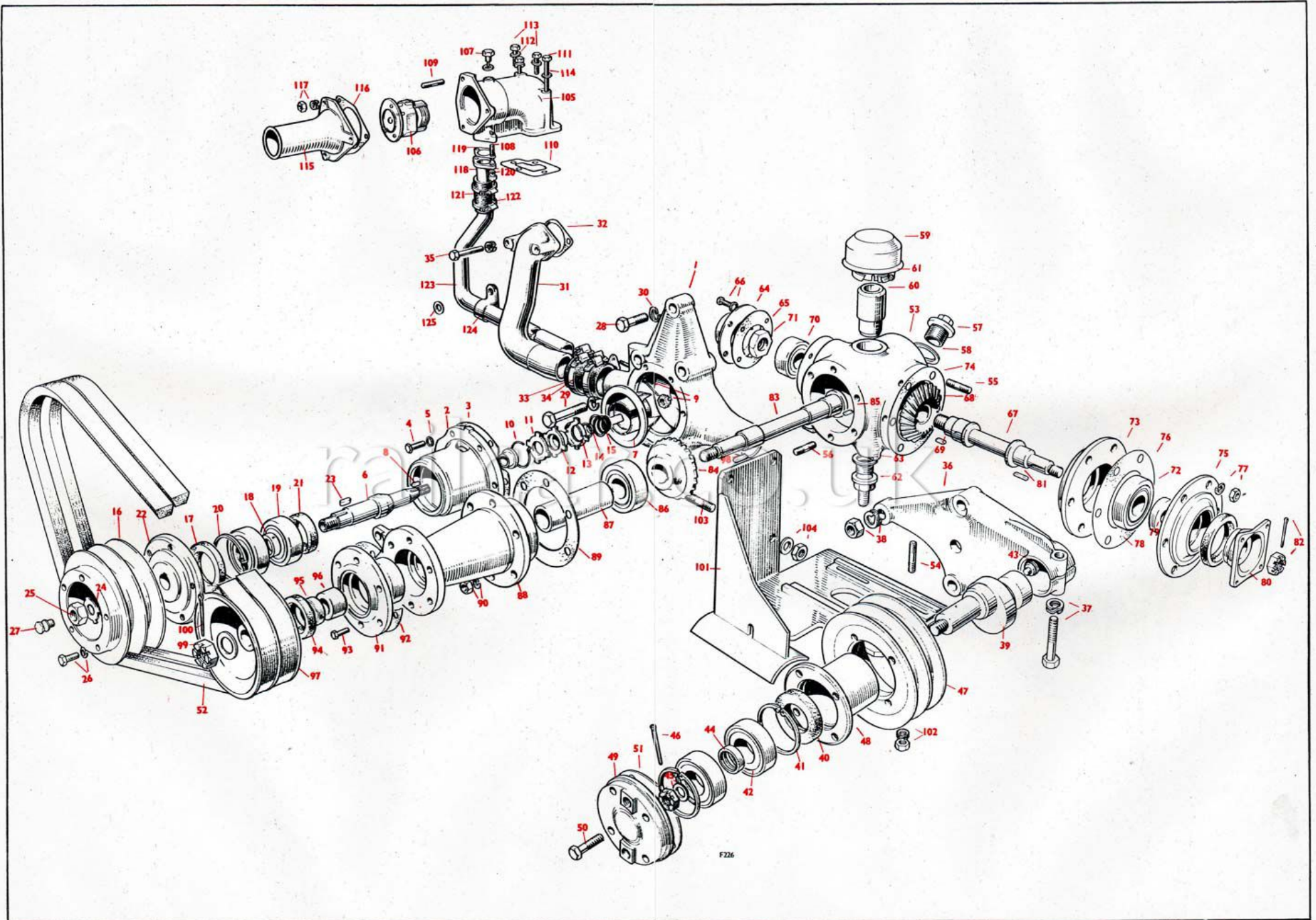












F226

