

11.3 LITRE HORIZONTAL DIESEL ENGINE SECTION

(WITH FUEL FILTER, FUEL PIPES
AND ELECTRICAL INSTALLATIONS)

(A.E.C. TYPE UNITS)

TYPES	D.T.O. Nos.
A220AC	1/12, 1/14 (24-off), 1/16, 1/17, 1/21, 1/22, 1/23 (6-off), 1/25, 1/27, 1/31, 1/33, 1/40, 1/57
A220AJ	1/26
A220AK	1/51, 1/56
A220AL	1/34
A220AZ	1/32
A220BB	1/55

INDEX
UNITS, COMPONENTS AND MAJOR PARTS FOR ENGINES (LESS FLYWHEELS)

Description	Page No.
Bearings, Main	A7
Bell, Air	A23
Bevel Drive Casing... ..	A5
Cleaners, Air	A31
Compressor, Air	A20
Connecting Rods	A9
Cooler, Oil	A29
Crankcase, Bottom Half	A10
Crankcase and Cylinder Block	A6, A7
Crankshaft	A9
Cylinder Head	A2, A3
Dipstick	A12
Electrical Installations	A25, A26
Engine Types	A1
Extension, Engine Casing	A10
Filler, Oil	A12
Filter, Fuel (Cloth Element)	A30
Filter, Fuel (Paper Element)	A23
Gaskets, Sets	A28
Gauze Box	A11
Generator, Speedometer	A29
Injection System, Fuel	A22, A23
Lever, Fuel Pump	A21
Non-Standard Items (Oversize and Undersize)... ..	A27, A28
Pistons and Rings	A9
Pulley, Fan Drive	A9
Pulley, Water Pump	A16
Pump, Fuel Injection	A21
Pump, Oil and Fittings	A13, A14
Pump, Water	A16
Right Angle Drive	A18, A19
Rocker Gear	A4
Solenoid	A21
Starter Motor	A24
Suspension, Engine... ..	A32
Switch, Oil Pressure	A30
Thermostat	A17

NUMERICAL INDEX TO PART NUMBERS

Manufacturer's Basic Part No.	B.R. Catalogue No.	Page	Manufacturer's Basic Part No.	B.R. Catalogue No.	Page
A220ACX	9/15/29955	A1	AA2816	9/15/40316	A4
A220AJX	9/15/29990	A1	AA3308	9/15/55265	A15
A220AKX	9/15/29991	A1	AA3367	9/15/55250	A15
A220ALX	9/15/29992	A1	AA3369	9/15/55251	A15
A220AZX	9/15/29993	A1	AA4422	9/15/40240	A4
A220BBX	9/15/29994	A1	AA4680	9/15/40313	A3
A0561	9/15/56257	A13	AA4681	9/15/40312	A3
A6137	9/15/56263	A13	AA4815	9/15/40253	A4
A6138	9/15/56266	A13	AA6006	9/15/33137	A11
A9175	9/15/35497	A6	AA6320	9/15/35543	A4
A9194	9/15/35686	A6	AA6944	9/15/35685	A6
A1/1153	9/15/61475	A16	AA8335	9/15/33120	A11
A1/1167	9/15/61469	A16	AA9303	9/15/56310	A13
A1/1168	9/15/61471	A16	AB0627	9/15/40317	A28
A1/2546	9/15/33140	A12	AB0628	9/15/40318	A28
A1/3775	9/15/55280	A15	AB0911	9/15/56271	A13
A1/4727	9/15/42077	A21	AB0912	9/15/56274	A13
A1/4728	9/15/35360	A5	AB2501	9/15/33177	A12
A1/7634	9/15/30575	A9	AB2503	9/15/33175	A12
A2/2947	9/15/33069	A11	AB2706	9/15/35352	A5
A2/2948	9/15/33091	A11	AB2707	9/15/35356	A5
A2/5609S	9/15/38032	A9	AB2906	9/15/34190	A20
A2/9225A	9/15/40303	A2	AB3014	9/15/35424	A10
A2/9233A	9/15/40160	A2	AB3026	9/15/35708	A10
A5/5514	9/15/38046	A9	AB3406	9/15/35462	A10
A5/5527	9/15/38063	A28	AB3407	9/15/35465	A10
A5/5528	9/15/38064	A28	AB3512	9/15/37515	A19
A6/2280	9/15/46625	A22	AB3517	9/15/35702	A8
A7/2202	9/15/35574	A7	AB3518	9/15/35701	A8
A7/2245	9/15/35414	A10	AB3602	9/15/75477	A24
A8/2224	9/15/55805	A14	AB3806	9/15/37530	A18
A8/2225	9/15/55775	A14	AB3807	9/15/37542	A18
A8/2226	9/15/55785	A14	AB3808	9/15/37500	A18
A8/2245	9/15/46630	A21	AB3809	9/15/37603	A18
A8/2246	9/15/46575	A21	AB3813	9/15/37602	A18
A8/2249	9/15/33132	A11	AB4103	9/15/34192	A20
A9/2287	9/15/46650	A23	AB5101	9/15/46842	A31
A9/2288	9/15/46655	A23	AB5103	9/15/46845	A31
A9/2295	9/15/55745	A14	AB5105	9/15/46839	A31
A9/2296	9/15/55735	A14	AB5106	9/15/46838	A31
A10/2226	9/15/35683	A5, A15	A10461	9/15/40197	A2
A10/2279	9/15/34223	A20	A10470	9/15/40195	A2
A10/2280	9/15/46645	A23	A10531	9/15/40194	A2
A10/2281	9/15/46800	A23	A10532	9/15/40193	A2
A10/2282	9/15/46640	A23	A11031	9/15/35658	A8
A10/2283	9/15/46801	A23	A11043	9/15/35659	A8
A10/2284	9/15/46635	A23	A11954		A9
A10/2285	9/15/46807	A23	A12050		A9
A11/2256	9/15/46594	A22	A12322	9/15/59240	A9
A11/2257	9/15/46595	A22	A13575	9/15/61437	A16
A11/2270	9/15/46590	A22	A14964	9/15/30585	A9
A11/2271	9/15/46591	A22	A15340	9/15/35493	A4
A11/2272	9/15/46592	A22	A15465	9/15/35601	A4
A11/2273	9/15/46593	A22	A15466	9/15/35388	A5
AA2259	9/15/40164	A2	A15475	9/15/34191	A20
AA2440	9/15/33100	A11	A15477	9/15/35603	A4
AA2535	9/15/33077	A11	A15498	9/15/35544	A4
AA2734	9/15/40247	A4	A16138	9/15/35481	A4
AA2735	9/15/40261	A4	A16247	9/15/35482	A4
AA2813	9/15/40250	A4	A16313	9/15/35589	A4

NUMERICAL INDEX TO PART NUMBERS

Manufacturer's Basic Part No.	B.R. Catalogue No.	Page	Manufacturer's Basic Part No.	B.R. Catalogue No.	Page
A16314	9/15/35588	A4	A75313	9/15/40163	A2
A16416	9/15/40270	A4	A75414		A4
A16505	9/15/40271	A4	A75525	9/15/40314	A4
A19096	9/15/35717	A12	A75630	9/15/40248	A4
A19234	9/15/35716	A12	A75705	9/15/40264	A4
A19649	9/15/42074	A21	A75905	9/15/40260	A4
A19752	9/15/33151	A12	A76988	9/15/35381	A5
A20729	9/15/56259	A13	A78203	9/15/55272	A15
A20827	9/15/56294	A13	A78207	9/15/56299	A13
A20828	9/15/56293	A13	A78213	9/15/56255	A13
A20831	9/15/56295	A13	A78310	9/15/56297	A13
A20925	9/15/56311	A13	A78402	9/15/35615	A8
A20926	9/15/56312	A13	A78691	9/15/35445	A10
A21127	9/15/56289	A13	A78692	9/15/35446	A10
A21131	9/15/56290	A13	A79009	9/15/55734	A14
A21773	9/15/61493	A16	A79907	9/15/55266	A15
A21791	9/15/30596	A9	A80932	9/15/35592	A4
A23032	9/15/35391	A5, A21	A80941	9/15/35593	A4
A23947	9/15/61500	A16	A81450	9/15/55260	A15
A24024	9/15/61503	A16	A81505	9/15/55270	A15
A26529	9/15/40182	A2	A83057	9/15/56743	A25
A26533	9/15/40181	A2	A83058	9/15/56757	A26
A26543	9/15/40191	A2	A83059		A25
A27418	9/15/61478	A16	A83060	9/15/56761	A26
A31016	9/15/40215	A3	A85062	9/15/40176	A2
A31022	9/15/61498	A16	A85069	9/15/40174	A2
A33122		A20	A88026	9/15/32113	A32
A33124		A5	A88031	9/15/32191	A8, A32
A36508	9/15/46580	A22	A88032	9/15/35637	A8
A44425	9/15/38061	A9	A89015		A15
A46605	9/15/34209	A20	A89101	9/15/55276	A15
A54606	9/15/38041	A9	A92607	9/15/37592	A19
A55502	9/15/61480	A16	A92608	9/15/37595	A18
A55503	9/15/61481	A16	A93708	9/15/37561	A19
A56461	9/15/40290	A3	A93709	9/15/37560	A18
A56708	9/15/30601	A9	A93710	9/15/37579	A19
A56709	9/15/30603	A9	A93711	9/15/37580	A18
A62521	9/15/40307	A3	A93712	9/15/37536	A18
A62522	9/15/40308	A3	A93713	9/15/37538	A18
A62523	9/15/40309	A3	A93714	9/15/37540	A19
A62607		A10	A93722	9/15/46840	A31
A63402	9/15/61483	A16	A93723		A31
A64001	9/15/35380	A5	A93724	9/15/46847	A31
A70753	9/15/40211	A3	A93725	9/15/37502	A19
A72577	9/15/40155	A3	A93726		A18
A72578	9/15/40147	A3	A93727	9/15/37588	A18
A72632	9/15/40212	A3	A93728	9/15/56745	A25
A72907	9/15/35542	A7	A1/11705	9/15/38048	A9, A28
A73001	9/15/40183	A2	A1/12106	9/15/38033	A9
A73103	9/15/40167	A2	A1/12107	9/15/59245	A28
A73237	9/15/33080	A11	A1/12108	9/15/59246	A28
A73313	9/15/33074	A11	A1/12109	9/15/59247	A28
A74312	9/15/30584	A9	A1/14295	9/15/35484	A7
A74412	9/15/30583	A9	A1/14296	9/15/35483	A7
A74602	9/15/30600	A9, A10	A1/14418A	9/15/35690	A6
A74603	9/15/34230	A7, A20	A1/14431A	9/15/35692	A6
A74719	9/15/30593	A9	A1/14432A	9/15/35691	A6
A74845	9/15/35668	A8	A1/14433A	9/15/35693	A6
A74962	9/15/30588	A9	A1/14745	9/15/35489	A7
A75207	9/15/40162	A2	A1/14746	9/15/35490	A7

NUMERICAL INDEX TO PART NUMBERS

Manufacturer's Basic Part No.	B.R. Catalogue No.	Page	Manufacturer's Basic Part No.	B.R. Catalogue No.	Page
A1/15400	9/15/58247	A26	A3/14216	9/15/59388	A27
A1/15408	9/15/35602	A4	A3/19440	9/15/35563	A4
A1/17174		A6	A3/19492	9/15/35448	A10
A1/17253		A11	A3/19493	9/15/35619	A8
A1/21721	9/15/37576	A19	A3/19495	9/15/40214	A3
A1/21792	9/15/37606	A19	A3/19496	9/15/40213	A2
A1/22879	9/15/37552	A18	A3/19497	9/15/33182	A11
A1/22890	9/15/42080	A21	A3/19498	9/15/55802	A14
A1/22892	9/15/35392	A5	A3/19499	9/15/56251	A13
A1/23824	9/15/61530	A16	A3/25716	9/15/61468	A16
A1/24452	9/15/62951	A26	A3/25731	9/15/40230	A3
A1/24458	9/15/61466	A16	A2/25788	9/15/61020	A17
A1/24462	9/15/61005	A17	A3/25789	9/15/61015	A17
A1/24495	9/15/46850	A31	A3/60670	9/15/34253	A20
A1/27257	9/15/40224	A3	A3/75111	9/15/34204	A20
A1/27258	9/15/40225	A3	A3/75130	9/15/35364	A5
A1/57172	9/15/35506	A6	A3/75155	9/15/34279	A20
A1/59361	9/15/35650	A8	A4/11640	9/15/38053	A9
A1/59362	9/15/35639	A8	A4/11641	9/15/38052	A9
A1/70419		A2	A4/11645	9/15/59301	A28
A1/77183	9/15/40202	A2	A4/11646	9/15/59296	A28
A2/13798	9/15/35485	A7	A4/11647	9/15/59295	A28
A2/14725	9/15/59337	A27	A4/11648	9/15/59302	A28
A2/14726	9/15/59361	A27	A4/11656	9/15/38051	A9
A2/14727	9/15/59369	A27	A4/11659	9/15/59298	A28
A2/14728	9/15/59377	A27	A4/11660	9/15/59299	A28
A2/14729	9/15/59385	A27	A4/13765	9/15/59335	A27
A2/14730	9/15/59393	A27	A4/13766	9/15/59359	A27
A2/14731	9/15/59338	A27	A4/13767	9/15/59367	A27
A2/14732	9/15/59362	A27	A4/13768	9/15/59375	A27
A2/14733	9/15/59370	A27	A4/13769	9/15/59383	A27
A2/14734	9/15/59377	A27	A4/13770	9/15/59391	A27
A2/14735	9/15/59386	A27	A4/13771	9/15/59336	A27
A2/14736	9/15/59394	A27	A4/13772	9/15/59360	A27
A2/50703		A26	A4/13773	9/15/59368	A27
A2/75160	9/15/35613	A8	A4/13774	9/15/59376	A27
A2/75164	9/15/40237	A2	A4/13775	9/15/59384	A27
A2/75166	9/15/40236	A2	A4/13776	9/15/59392	A27
A2/75167	9/15/56250	A13	A4/13777	9/15/59333	A27
A2/75171	9/15/35509	A6, A7	A4/13778	9/15/59357	A27
A2/75172	9/15/35510	A6, A7	A4/13779	9/15/59365	A27
A2/75177	9/15/35578	A7	A4/13780	9/15/59373	A27
A2/75178	9/15/35577	A7	A4/13781	9/15/59381	A27
A2/75186	9/15/40235	A2	A4/13782	9/15/59389	A27
A2/75188	9/15/35699	A7	A4/13783	9/15/59334	A27
A2/75197	9/15/35365	A5	A4/13784	9/15/59358	A27
A3/13700	9/15/35487	A7	A4/13785	9/15/59366	A27
A3/13701	9/15/35486	A7	A4/13786	9/15/59374	A27
A3/13702	9/15/35488	A7	A4/13787	9/15/59382	A27
A3/14205	9/15/59331	A27	A4/13788	9/15/59390	A27
A3/14206	9/15/59355	A27	A4/19402	9/15/55780	A14
A3/14207	9/15/59363	A27	A4/19403	9/15/55772	A14
A3/14208	9/15/59371	A27	A4/19404	9/15/55740	A14
A3/14209	9/15/59379	A27	A4/19405	9/15/33171	A12
A3/14210	9/15/59387	A27	A4/19406	9/15/35562	A7
A3/14211	9/15/59332	A27	A4/19407	9/15/35504	A6, A7
A3/14212	9/15/59356	A27	A4/19408	9/15/55278	A14, A15
A3/14213	9/15/59364	A27	A4/19409	9/15/35505	A6, A7
A3/14214	9/15/59372	A27	A4/19410	9/15/40217	A3, A17
A3/14215	9/15/59380	A27	A4/19411	9/15/35368	A5

NUMERICAL INDEX TO PART NUMBERS

Manufacturer's Basic Part No.	B.R. Catalogue No.	Page	Manufacturer's Basic Part No.	B.R. Catalogue No.	Page
A4/19412	9/15/35393	A5	V38702		A25
A4/19414	9/15/61467	A16	V38703		A25
A4/19418	9/15/33172	A12	V38704		A25
A4/19419	9/15/35559	A7	V38706		A25
A4/19427	9/15/35558	A7	Y1436	9 15 32189	A32
A4/19429	9/15/34215	A20	Y1437	9 15 32194	A32
A4/19434	9/15/61484	A16	Y1438	9 15 32196	A32
A4/19440	9/15/34195	A20	Y10281		A32
A4/19446	9/15/61007	A17	Y10282		A32
A4/19477	9/15/35367	A5	Y10283		A32
A4/19492	9/15/40208	A2	Y10284	9 15 32206	A33
A5/19472	9/15/55267	A15	Y30412	9 15 32123	A32
A6/11538	9/15/38050	A9	Y30432	9 15 32192	A32
A6/11539	9/15/59291	A28	Z1003	9 15 58050	A14
A6/11540	9/15/59292	A28	Z1804	9 15 56315	A15
F19714	9/15/40149	A3	Z2402	9 15 32199	A32
G25250	9/15/35571	A7, A20	Z2403	9 15 46832	A30
G25269	9/15/34220	A20	Z2404	9 15 46833	A30
G1/14722	9/15/42087	A21	Z2408	9 15 46834	A30
G1/25157	9/15/34210	A20	Z2409	9 15 32197	A32
N1/0803	9/15/61037	A17	Z2411	9 15 56740	A25
N3/0425	9/15/61030	A17	Z2412	9 15 76300	A25
N12784	9/15/61040	A17	Z2413	9 15 56741	A25
N18505	9/15/61008	A17	Z2414	9 15 76301	A25
Q2/21492	9/15/46535	A23	Z2419	9 15 56742	A25
R1466	9/15/45504	A21	Z2420	9 15 76302	A25
R1670	9 15 45581	A21	Z10627		A26
R4/1316	9 15 45512	A21	Z10661	9/15/46803	A22
R3/11362	9 15 45580	A21	Z10677	9/15/32203	A33
R17125	9 15 45540	A21	Z11023	9/15/40255	A4
R17128	9 15 46836	A30	Z11024	9/15/35492	A4, A13
S1437	9/15/33152	A12	Z30679	9/15/33135	A11
S1439	9 15 33150	A12	Z30898	9/15/35715	A12
S10639	9 15 33153	A12	Z31992	9/15/34200	A4, A13, etc.
S13316	9 15 46806	A23	Z32034		A7, A10, etc.
S13547	9 15 46565	A23	Z32047	9 15 62930	A24, A29
S14603	9 15 33154	A12	Z43123	9 15 34198	A20
S1/13151	9 15 46548	A23	Z43334	9 15 35682	A5
S1/13163	9 15 46547	A23	Z43485	9 15 75481	A24
S1/13169	9 15 46546	A23	Z43741	9 15 35662	A8
S1/13319	9 15 62900	A29	Z43778	9 15 35455	A10
S1/13321	9 15 46525	A23	Z43797	9 15 35516	A2, A6, etc.
S1/13375	9 15 56749	A25	Z44018	9 15 30586	A9
S2/13362	9 15 56314	A14	Z44028	9 15 40180	A2
S2/13393	9 15 56747	A25	Z44040	9 15 56270	A13
U188290	9 15 56744	A25	Z44093	9 15 35540	A7
U188291		A25	Z44241	9 15 37562	A18
V4410	9 15 75510	A24	Z44242	9 15 37563	A18
V4430	9 15 75700	A24	Z44243	9 15 37564	A19
V1/0124	9 15 75489	A24	Z44247	9 15 46848	A31
V1/0155	9 15 75488	A24	Z44505	9 15 33084	A11
V1/0190	9 15 62942	A29	Z44564	9 15 33081	A10, A11
V1/0191	9 15 62935	A29	Z44565	9 15 34235	A20
V3/0333	9 15 56750	A25	Z44795	9 15 56984	A25, A30
V3/0347	9 15 56751	A25	Z44907	9 15 37591	A18
V3/0396	9 15 56752	A25	Z45298	9 15 45516	A21
V10139	9 15 75486	A24	Z45439	9 15 33133	A11
V10170	9 15 75487	A24	Z47007	9 15 70015	A24, A29
V18424	9 15 33093	A11	Z47076	9 15 33157	A12
V38701		A25	Z47095	9 15 33158	A12

NUMERICAL INDEX TO PART NUMBERS

Manufacturer's Basic Part No.	B.R. Catalogue No.	Page	Manufacturer's Basic Part No.	B.R. Catalogue No.	Page
Z47076	9/15/33157	A12	Z2/30718	9/15/35609	A8
Z47095	9/15/33158	A12	Z2/30750	9/15/35457	A10
Z47513		A31	Z2/31318	9/15/55801	A14, A15
Z48616		A25	Z2/31927	9/15/35371	A5
Z48617		A25	Z2/31950	9/15/30591	A9
Z48856	9/15/61494	A16	Z2/32006	9/15/35508	A6, A21
Z49319	9/15/46837	A30	Z2/32044		A8, A11, etc.
Z49807	9/15/32193	A32	Z2/32045		A5, A14
Z50015	9/15/33078	A11	Z2/32047		A5, A11, etc.
Z51777	9/15/45530	A21	Z2/32049	9/15/35373	A5
Z51784	9/15/32205	A33	Z2/32056		A22, A23
Z1/10114	9/15/56275	A13	Z2/32061		A15
Z1/10125	9/15/56272	A13	Z2/43261	9/15/46841	A31
Z1/10126	9/15/35552	A4	Z2/43262	9/15/46849	A31
Z1/10141	9/15/35354	A5	Z2/43712	9/15/33098	A11
Z1/10159	9/15/34193	A20	Z2/43748	9/15/35663	A8
Z1/10165	9/15/56262	A13	Z2/44002	9/15/38062	A9
Z1/30649	9/15/62945	A24, A29	Z2/44021	9/15/30587	A9
Z1/30716	9/15/30581	A9	Z2/44500	9/15/37575	A18
Z1/30756	9/15/35411	A10	Z2/44508	9/15/34278	A20
Z1/31960		A5	Z2/44527	9/15/37574	A18
Z1/32033	9/15/40252	A4	Z2/45449	9/15/55273	A15
Z1/32063		A11	Z2/45476	9/15/61501	A16
Z1/43108	9/15/30589	A9	Z2/45477	9/15/33161	A12
Z1/43111	9/15/61485	A16	Z2/46565	9/15/55756	A14
Z1/43119	9/15/30590	A9	Z2/46566	9/15/55757	A14
Z1/43226	9/15/33134	A11	Z2/46567	9/15/55758	A14
Z1/43705	9/15/40150	A3	Z2/46568	9/15/55795	A14
Z1/43754	9/15/30598	A9	Z2/46569	9/15/55796	A14
Z1/44003	9/15/35357	A5, A7	Z2/46570	9/15/55797	A14
Z1/44026	9/15/61041	A17	Z2/46571	9/15/35377	A5
Z1/44035	9/15/35709	A10	Z2/46572	9/15/35378	A5
Z1/44062	9/15/35503	A6	Z2/46573	9/15/35379	A5
Z1/44077	9/15/40190	A2	Z2/46574	9/15/35399	A5
Z1/44078	9/15/35541	A7	Z2/46575	9/15/35400	A5
Z1/44079	9/15/34213	A20, A21	Z2/46576	9/15/35401	A5
Z1/44080	9/15/33073	A11	Z2/46595	9/15/34244	A20
Z1/44081	9/15/42081	A21	Z2/46596	9/15/34245	A20
Z1/44539	9/15/56755	A14	Z2/46597	9/15/34246	A20
Z1/44546	9/15/56283	A13	Z3/10253	9/15/35703	A8
Z1/44555	9/15/35513	A6	Z3/30545	9/15/35533	A6
Z1/44564	9/15/35512	A6	Z3/30602	9/15/30604	A9
Z1/44565	9/15/35374	A5	Z3/30616		A5, A15
Z1/44568	9/15/35581	A7	Z3/30692	9/15/40265	A4
Z1/44703	9/15/35386	A5	Z3/30693	9/15/40267	A4
Z1/44733	9/15/56254	A13	Z3/32016	9/15/35567	A4
Z1/44736	9/15/35387	A5	Z3/32046	9/15/37570	A18
Z1/44737	9/15/42088	A21	Z3/43710	9/15/40283	A2
Z1/44739	9/15/30594	A9	Z3/43722	9/15/35583	A4, A13, etc.
Z1/44740	9/15/35675	A8	Z3/43766	9/15/42070	A21
Z1/44762	9/15/30602	A9	Z3/43777	9/15/35514	A6
Z1/44776	9/15/35600	A4	Z3/43778	9/15/35515	A6
Z1/45470	9/15/55275	A15	Z3/45410	9/15/56298	A13
Z1/46571	9/15/35590	A4	Z3/45426	9/15/34248	A20
Z1/46572	9/15/35591	A4	Z3/46592	9/15/37581	A18, A19
Z1/47007	9/15/38042	A9	Z3/46592A	9/15/37582	A18, A19
Z1/47012	9/15/75485	A24	Z3/46592B	9/15/37583	A18, A19
Z1/47023	9/15/33165	A12	Z3/46593	9/15/58206	A29
Z2/30652	9/15/42096	A12, A21	Z3/46593A	9/15/58207	A29
Z2/30671	9/15/40266	A4	Z3/46593B	9/15/58208	A29

NUMERICAL INDEX TO PART NUMBERS

Manufacturer's Basic Part No.	B.R. Catalogue No.	Page	Manufacturer's Basic Part No.	B.R. Catalogue No.	Page
Z4/30686		A10, A12, etc.	Z7/30533	9/15/35527	A6
Z4/30688		A2, A5, etc.	Z7/30552	9/15/35525	A6
Z4/30691		A30	Z7/30556	9/15/40189	A2
Z4/30692		A6, A7, etc.	Z7/30574	9/15/40188	A2
Z4/30693	9/15/34207	A20	Z7/30712	9/15/55760	A14
Z4/30695		A16	Z7/30760	9/15/55800	A14, A15
Z4/30696		A7, A10, etc.	Z7/30769	9/15/33099	A11
Z4/30697	9/15/33181	A15	Z7/30771	9/15/32201	A31, A32
Z4/30698		A5, A22, etc.	Z7/31307	9/15/34273	A20
Z4/30699	9/15/58240	A29	Z8/30530	9/15/35531	A6
Z4/30728	9/15/35458	A10	Z8/30531	9/15/35532	A6
Z4/30774	9/15/55296	A15	Z8/30533	9/15/35527	A6
Z4/30789	9/15/55295	A15	Z8/30534	9/15/35694	A6
Z4/31319	9/15/35538	A7	Z8/30546	9/15/34251	A11, A20
Z4/31321	9/15/46617	A22	Z8/30576	9/15/46843	A31
Z4/31395	9/15/46544	A21, A23	Z8/30577	9/15/46844	A31
Z4/46522	9/15/56284	A13	Z8/30722	9/15/32101	A31, A32
Z4/46523	9/15/56285	A13	Z8/44852	9/15/37586	A19
Z4/46524	9/15/56286	A13	Z8/44853	9/15/37584	A19
Z5/30509	9/15/33086	A11	Z8/44854	9/15/37577	A19
Z5/30590	9/15/35534	A6	Z8/44855	9/15/37585	A18
Z5/30594	9/15/33085	A11	Z8/44864	9/15/40292	A3
Z5/30599	9/15/35440	A10	Z8/44865	9/15/40192	A3
Z5/30600	9/15/55298	A15, A23	Z8/44866	9/15/40294	A3
Z5/30609		A11, A21	Z8/44877	9/15/40179	A2
Z5/30684	9/15/35714	A12	Z9/30719	9/15/55771	A14
Z5/30791	9/15/55792	A14	Z9/30756	9/15/32200	A32
Z5/30792	9/15/55791	A13, A14	Z11/30730	9/15/32190	A33
Z5/31322	9/15/46553	A22	Z11/30731	9/15/32207	A33
Z5/31323	9/15/46805	A22	Z11/30779	9/15/35586	A7, A16
Z5/31341	9/15/56318	A15	Z11/30783	9/15/35459	A10
Z5/31342	9/15/56319	A15	Z12/30711	9/15/56321	A15
Z5/31390	9/15/46526	A23	Z12/30728	9/15/35412	A10
Z6/30501	9/15/35535	A6	Z12/30756	9/15/40276	A21
Z6/30503	9/15/35436	A10	Z12/30764	9/15/35413	A10
Z6/30516	9/15/35521	A6	Z12/30769	9/15/46527	A23
Z6/30520	9/15/35439	A10	Z13/30740	9/15/40277	A3
Z6/30521	9/15/35520	A6	Z13/30782	9/15/35681	A5, A22, etc.
Z6/30574	9/15/35435	A10	Z14/30710	9/15/75475	A24
Z6/30588	9/15/35587	A7	Z14/30730	9/15/56320	A15
Z6/30591	9/15/35438	A10	Z14/30754	9/15/55761	A14
Z6/30626	9/15/34260	A20	Z14/30781	9/15/42095	A21
Z6/30669	9/15/32204	A33	Z14/30793	9/15/35456	A10
Z6/30673	9/15/35700	A8	Z14/30794	9/15/32185	A32
Z6/30684	9/15/37590	A18	Z15/30707	9/15/35491	A4
Z6/30685	9/15/40295	A3	Z15/30718	9/15/35389	A3
Z6/30798		A8	Z15/30719	9/15/40280	A3
Z6/31394	9/15/46541	A22	Z15/30720	9/15/40281	A3
Z6/31395	9/15/46804	A22	Z15/30721	9/15/35460	A10
Z6/44891	9/15/61489	A16, A17	Z15/30725	9/15/55770	A14
Z7/30503	9/15/35524	A6	Z15/30748	9/15/33169	A12
Z7/30505	9/15/35517	A6	Z16/30730	9/15/61508	A16
Z7/30506	9/15/35434	A10, A11	Z16/30743	9/15/61509	A16
Z7/30513	9/15/33095	A11	Z17/30769	9/15/55794	A14
Z7/30517	9/15/35520	A6	Z18/30714	9/15/35390	A5
Z7/30518	9/15/35522	A6	Z18/30718	9/15/35389	A5
Z6/30519	9/15/35523	A6	Z18/30727	9/15/55762	A14
Z7/30521	9/15/35358	A5	Z18/30730	9/15/58200	A10
Z7/30525	9/15/33082	A11	Z18/30737	9/15/37501	A19
Z7/30529	9/15/35437	A10	Z18/30758	9/15/56261	A13

NUMERICAL INDEX TO PART NUMBERS

Manufacturer's Basic Part No.	B.R. Catalogue No.	Page	Manufacturer's Basic Part No.	B.R. Catalogue No.	Page
Z19/30738	9/15/32209	A33	100-3		A30
Z20/30713	9/15/46802	A22	100-4		A9, A11
5-4	9/43/5266	A16	100-5		A21
5-5	9/43/5279	A18, A19	100-7		A11, A14, etc.
13-5	9/11/628	A22	100-9		A32
13-11	9/11/664	A22	100-10		A15
17-1	9/15/37533	A18	100-11		A16, A31, etc.
28-31	9/15/56756	A26	100-14		A11, A18, etc.
39-2	9/15/56763	A26	100-16		A4, A13, etc.
39-4	9/15/45500	A21	100-18		A4, A19
40-36	9/15/61028	A17	100-19		A32
40-41	9/15/61507	A16	100-100		A12
40-55	9/15/61027	A17	100-106		A20
40-64	9/15/61051	A17	101-6		A11
41-108	9/15/42071	A21	103-93	9/15/35582	A4, A20
42-102	9/15/46556	A23	103-194	9/15/55790	A14
43-97	9/15/34270	A20	103-202	9/15/35710	A10
43-110	9/15/34272	A20	103-211	9/15/35689	A6
43-124	9/15/34271	A20	107-442		A29
78-598	9/15/46822	A30	114-54		A12
78-655	9/15/46828	A30	114-65		A12
78-729	9/15/46823	A30	117-241	9/15/45557	A21
78-739	9/15/46080	A23	119-31		A25
78-752	9/15/62910	A29	119-109	9/15/40315	A4
78-780	9/15/46846	A31	121-102	9/15/45555	A21
78-784	9/75/2070	A23	121-103	9/15/30582	A9, A18, etc.
78-848	9/15/46851	A31	121-104	9/15/56758	A26
78-850	9/15/37535	A18	121-105	9/15/37578	A19
81-260	9/15/46582	A22, A26	121-111	9/15/56746	A25
81-264	9/15/46619	A22, A26	121-113	9/15/84025	A21
81-312	9/15/99039	A16	121-155		A8
81-2034	9/15/55732	A14	121-217	9/15/34277	A20
81-2336	9/15/61045	A17	124-125	9/15/40187	A2
81-2385	9/15/56980	A25, A30	124-1122	9/15/61531	A16
81-2445	9/15/46835	A30	124-1126	9/15/58209	A5
85-32		A9, A21, etc.	124-1154	9/15/37548	A18
85-33		A2, A8, etc.	124-1155	9/15/37546	A18
85-34		A4, A12, etc.	124-1170	9/15/40186	A3
85-35		A4, A19, etc.	124-1200	9/15/40185	A3
85-36		A8, A33	124-1213	9/15/35519	A6
85-38		A16	125-121	9/15/61042	A17
85-65	9/15/40311	A3	125-122	9/15/35433	A10
85-156		A3	125-123	9/15/94826	A17
86-32		A11	125-155	9/15/33166	A12
86-33		A11, A13, etc.	125-184	9/15/37508	A19
86-34		A9	125-198	9/15/35712	A11
86-35		A32	130-7	9/15/56317	A15
86-36		A31, A32	130-17	9/15/46809	A23, A30
86-38		A18, A29, etc.	130-42	9/15/46812	A23
86-39		A19, A32	131-107	9/15/35353	A5
90-31		A21	132-3	9/15/46618	A22, A23, etc.
90-38		A32	132-12	9/15/56316	A15
90-164		A10, A29	132-49	9/15/46811	A23
90-166		A15	134-2		A11, A18
91-65		A16	134-3		A8, A19, etc.
93-29		A23	134-4		A17, A20, etc.
99-5		A4	134-5		A19
99-133		A15	134-6		A31, A32
99-217		A9, A28	134-8		A33
99-271		A16	135-3		A1, A17

NUMERICAL INDEX TO PART NUMBERS

Manufacturer's Basic Part No.	B.R. Catalogue No.	Page	Manufacturer's Basic Part No.	B.R. Catalogue No.	Page
135-4		A19, A31	347-215		A26
135-32		A9, A19, etc.	373-414	9/15/58220	A29
135-33		A8, A17, etc.	402-220		A26
135-34		A12, A18, etc.	402-302		A25
135-35		A23	407-42		A25
135-36		A8, A20, etc.	408-2		A25
135-38		A8	408-11		A25
135-92		A20	409-24		A25
135-94		A20	410-31		A25
135-122		A21	411-660	9/15/56760	A26
136-36		A16	411-661	9/15/56762	A26
136-37	9/15/55739	A14	422-73		A26
138-1	9/15/56302	A13	422-74		A25
138-16	9/15/33083	A10, A11	426-219		A25, A26
138-56		A25	499-819		A25, A26
138-129	9/15/40310	A3, A16, etc.	499-820		A25, A26
138-131	9/15/56313	A14	499-837		A25, A26
138-139	9/15/35698	A20	499-1144		A26
138-144	9/15/35382	A5, A20	499-2325	9/15/75484	A24
138-151	9/15/40305	A2, A3, etc.	499-2396		A25, A26
138-152	9/15/61042	A17	499-2397		A25, A26
138-156	9/15/35383	A5, A25	499-2398		A25, A26
138-158	9/15/35697	A7	499-2399		A25, A26
138-172	9/15/35711	A10	499-2602		A24
138-201	9/15/34259	A20	499-3401		A25, A26
138-211	9/15/35688	A6, A7, etc.	499-3409		A25, A26
138-223	9/15/35687	A6	499-3412		A25, A26
141-16	9/15/45546	A21	499-3413		A25, A26
143-8	9/15/40184	A3	499-3453		A26
148-18		A12	499-3827		A25, A26
149-14		A12, A26	499-3828		A25
150-14		A30	499-3829		A25
153-19		A21, A26	499-3830		A25
156-79	9/15/35369	A4, A5	499-3890		A26
156-165	9/15/56280	A13	499-4203	9/15/84100	A21
156-168	9/15/37565	A18, A19	499-4295		A26
156-169	9/15/61487	A16, A19	560-2406	9/15/47300	A21
156-174	9/15/37568	A18	560-2548	9/15/42092	A21
156-175	9/15/58203	A29	560-2897		A23
157-5	9/15/35565	A13	560-3518	9/15/47302	A21
202-3	9/15/56288	A13	562-49	9/15/41839	A22
216-423	9/15/46810	A23	562-50	9/15/41838	A22
219-21		A4, A7, etc.	562-51	9/15/41800	A22
219-24		A8	562-150	9/15/41805	A22
219-25		A6	5002-96	9/15/34275	A20
219-47	9/15/33079	A11	5002-97	9/15/34276	A20
251-11	9/15/35449	A10	5058-1	9/15/32202	A33
255-46	9/15/40151	A3, A8	5091-1	9/15/61497	A16
332-68		A17	5091-2	9/15/61499	A16, A18, etc.
332-74		A16, A18	5091-3	9/15/35376	A5
332-86		A29	5091-32	9/15/30599	A9
332-128		A3, A31	5092-6	9/15/34240	A20
341-168	9/15/94057	A8	5092-45	9/15/30620	A9
341-1668	9/15/35630	A8			
341-1669	9/15/40158	A3			
341-1730	9/15/35706	A8			
342-54	9/15/62950	A29			
342-417		A32			
342-419	9/15/32208	A33			
344-377		A26			

ENGINE TYPES

B.R. Cat. No.	A.E.C. Basic Part No.	Description
9/15/29955	A220ACX	ENGINE COMPLETE WITH FLYWHEEL, TWIN FUEL FILTER, FUEL PIPES AND FITTINGS, AND ELECTRICAL INSTALLATIONS (RIGHT ANGLE DRIVE)
9/15/29990	A220AJX	ENGINE COMPLETE AS A220ACX LESS AIR COMPRESSOR AND ONE OIL PRESSURE SWITCH
9/15/29991	A220AKX	ENGINE COMPLETE AS A220ACX WITH 3" SHORTER OIL FILLER TUBE
9/15/29992	A220ALX	ENGINE COMPLETE AS A220AKX WITH SIMMS STARTER MOTOR
9/15/29993	A220AZX	ENGINE COMPLETE AS A220AJX LESS FAN SHAFT SPACER (PAGES A.18/19) AND WITH DIFFERENT ELECTRICAL INSTALLATIONS (PAGES A.25/26)
9/15/29994	A220BBX	ENGINE COMPLETE AS A220ACX WITH SIMMS STARTER MOTOR
NOTE:—For Fluid Flywheel see Section J.31		
NOTE:—If an Engine only is required, i.e. without Flywheel, Oil Cooler, Speedometer Generator and Tie Rod Link, the suffix letter "X" should be omitted after the Engine Type		

railcar.co.uk

B.R. Cat. No.	A.E.C. Basic Part No.	Plate Ref.	Designation	Used on	No. Req. per Engine	Remarks
9/15/40303	A2/9225A	A1	ENGINE COMPLETE	All Models		For Types, see page A.1
9/15/40160	A2/9233A		CYLINDER HEAD COMPLETE WITH VALVES, GUIDES AND STUDS ...	"	1	Front } With 45° Exhaust Valves
9/15/40164	AA2259		CYLINDER HEAD COMPLETE WITH VALVES, GUIDES AND STUDS ...	"	1	Rear } With 45° Exhaust Valves
9/15/40302	AA2266		CYLINDER HEAD WITH VALVE GUIDES AND STUDS ...	"	1	Front } With 45° Exhaust Valves
	A1/70419	1	Cylinder Head, Bare ...	"	1	Rear } Not supplied as Spares
9/15/40188	Z7/30574	2	Stud, Special, $\frac{7}{16}$ " B.S.F. x $1\frac{1}{4}$ " ...	"	2	Exhaust Manifold
9/15/40189	Z7/30556	3	Stud, Special, $\frac{3}{8}$ " B.S.F. x $2\frac{1}{2}$ " ...	"	8	Injectors
9/15/40186	124-1170	4	Stud, Special, $\frac{9}{16}$ " B.S.F. x $3\frac{3}{4}$ " ...	"	12	Valve Rocker
9/15/40185	124-1200	5	Stud, Special, $\frac{7}{16}$ " B.S.F. x $3\frac{1}{2}$ " ...	"	6	Bracket
9/15/40187	124-125	5	Stud, Special, $\frac{5}{16}$ " B.S.F. x $1\frac{1}{2}$ " ...	"	6	Air Intake Elbow—
				"	3	Rear Cylinder Head
9/15/40183	A73001	6	Jacknut, Special ...	"	4	
9/15/40167	A73103	7	Collar, Jacknut ...	"	4	
9/15/40184	143-8	8	Screw, Ch. Hd., No. 1 B.A. x $\frac{3}{8}$ " ...	"	4	Jacknut Collar
9/15/40179	Z8/44877		Sheath, Injector ...	"	6	
		A2				
9/15/40182	A26529	1	Guide, Inlet Valve ...	"	6	
9/15/40181	A26533	2	Guide, Exhaust Valve ...	"	6	
9/15/40180	Z44028	3	Dowel, Valve ...	"	6	
9/15/40176	A85062		Insert, Inlet Valve ...	"	6	For Oversize Inserts, see Page A.28
9/15/40174	A85069		Insert, Exhaust Valve ...	"	6	45°
9/15/40191	A26543	4	Restraint, Inlet Valve ...	"	6	
9/15/40197	A10461	5	Valve, Inlet ...	"	6	
9/15/40195	A10470	6	Valve, Exhaust ...	"	6	45°
9/15/40193	A10532	7	Spring, Valve, Inner ...	"	12	
9/15/40194	A10531	8	Spring, Valve, Outer ...	"	12	
9/15/40162	A75207	9	Cotter, Split, Valve ...	"	24	
9/15/40163	A75313	10	Cup, Top ...	"	12	
		A1				
9/15/40190	Z1/44077	9	Dowel ...	"	4	Cylinder Head to Engine Casing
9/15/40236	A2/75166	10	Cover Plate, Front ...	"	1	Cylinder Heads
9/15/40237	A2/75164	11	Cover Plate, Rear ...	"	1	
9/15/40213	A3/19496	12	Joint ...	"	2	Cover Plates to Cylinder Head
9/15/35516	Z43797	13	Setscrew, Special, $\frac{5}{16}$ " B.S.F. x 21 m/m. ...	"	30	
9/15/40305	138-151	14	Washer, Copper, $\frac{21}{64}$ " x 15 x 1 m/m., Special ...	"	30	
9/15/40235	A2/75186	16	Plate, Blanking ...	"	1	Rear Cylinder Head
9/15/40283	Z3/43710	17	Setscrew, Special, $\frac{5}{16}$ " B.S.F. x 19 m/m. ...	"	3	
9/15/40202	A1/77183	18	Elbow, Air Intake ...	"	1	
	85-33		Nut, Plain, $\frac{5}{16}$ " B.S.F. ...	"	3	Air Intake Elbow
	135-3	20	Washer, Thackray, $\frac{5}{16}$ " ...	"	3	
9/15/40208	A4/19492		Joint ...	"	2	Air Intake Elbow and Blanking Plate

B.R. Cat. No.	A.E.C. Basic Part No.	Plate Ref.	Designation	Used on	No. Req. per Engine	Remarks
9 15 40290	A56461	AI	ENGINE —Continued			
9 15 40215	A31016	21	Tube, Air Connection	All Models		
	332-128	22	Joint Ring, Rubber ...	"	1	} Connection Between Cylinder Heads
9 15 40230	A3/25731	23	Clip, Jubilee, No. 4	"	1	
9 15 40217	A4/19410	24	Pipe, Water Connection	"	1	
9 15 40281	Z15/30720	32	Joint ...	"	1	
9 15 40277	Z13/30740	25	Setscrew, $\frac{5}{16}$ " B.S.F. $\times 2\frac{7}{8}$ "	"	2	} Front to Rear Cylinder Heads
9 15 40310	138-129	26	Setscrew, $\frac{5}{16}$ " B.S.F. $\times 1\frac{1}{2}$ "	"	4	
9 15 40211	A70753	27	Washer, Copper, $\frac{21}{64}$ " $\times 15$ m/m. $\times \frac{3}{32}$ ", Special	"	4	
	85-156	33	Gasket ...	"	8	
9 15 40295	Z6/30685	34	Nut, Plain, $\frac{1}{2}$ " B.S.F.	"	2	} Cylinder Heads to Engine Casing
9 15 40292	Z8/44864	35	Washer, Special, 13 S.W.G., Pressing	"	36	
9 15 40192	Z8/44865		Tube, 3-145"	"	36	
9 15 40294	Z8/44866		Tube, $2\frac{9}{16}$ "	"	8	} Cylinder Head Studs
9 15 40307	A62521		Tube, $2\frac{5}{8}$ "	"	4	
9 15 40308	A62522		Shim, 0-005"	"	16	
9 15 40309	A62523		Shim, 0-010"	"		} Used only when Flashing Cylinder Block Face
9 15 40224	A1/27257	36	Shim, 0-020"	"	As req.	
9 15 40225	A1/27258	37	Exhaust Manifold, Front	"	1	
9 15 40214	A3/19495	38	Exhaust, Manifold, Rear	"	1	
9 15 40311	85-65	39	Joint ...	"	4	} Exhaust Manifold to Cylinder Head
9 15 40312	AA4681		Nut, Plain, $\frac{7}{16}$ " B.S.F. "Rustless", Special	"	8	
9 15 40313	AA4680		CYLINDER HEAD COVER COMPLETE	"	1	Front
9 15 40147	A72578	40	CYLINDER HEAD COVER COMPLETE	"	1	Rear
9 15 40155	A72577	41	Cover, Valve, Front	"	1	Front
9 15 40149	F19714	42	Cover, Valve, Rear...	"	1	Rear
9 15 40150	Z1/43705	43	Monogram, B.U.T. ...	"	1	
9 15 40151	255-46	44	Screw, Special	"	3	} Front
9 15 40158	341-1669	45	Washer, Lead, 5 \times 10 \times 1 m/m.	"	3	
9 15 40150	Z1/43705	46	Plate, Instruction	"	1	} Rear
9 15 40212	A72632	47	Screw, Special	"	5	
9 15 35389	Z15/30718	48	Joint ...	"	2	
9 15 40280	Z15/30719	49	Setscrew, $\frac{5}{16}$ " B.S.F. $\times 3\frac{3}{8}$ "	"	6	} Valve Covers to Cylinder Head
9 15 40305	138-151	50	Setscrew, $\frac{5}{16}$ " B.S.F. $\times 3\frac{3}{8}$ "	"	14	
			Washer, Copper, $\frac{21}{64}$ " $\times 15$ m/m. Special	"	20	

ralcar.co.uk

B.R. Cat. No.	A.E.C. Basic Part No.	Plate Ref.	Designation	Used on	No. Req. per Engine	Remarks
		A2	ENGINE —Continued	All Models		
9/15/40247	AA2734	11	VALVE ROCKER SHAFT COMPLETE ...	"	2	
9/15/40261	AA2735	12	VALVE ROCKER SHAFT WITH GRUB SCREW	"	2	
9/15/40314	A75525		Shaft, Valve Rocker	"	2	
9/15/40315	119-109		Screw, Grub, $\frac{1}{2}$ " B.S.F. $\times \frac{1}{2}$ "	"	4	
9/15/40248	A75630	13	Bracket	"	6	
9/15/40264	A75705	14	Spring	"	4	
9/15/40266	Z2/30671	15	Washer, Special, 18 S.W.G.	"	As req.	
9/15/40265	Z3/30692		Washer, Special, 14 S.W.G.	"		
9/15/40267	Z3/30693		Washer, Special, 24 S.W.G.	"		
	99-5	16	Circlip, Seeger, $\frac{3}{8}$ " G.P. Dia.	"	4	
9/15/40250	AA2813		VALVE ROCKER COMPLETE	"	12	
9/15/40253	AA4815		VALVE ROCKER WITH BALL AND BUSH	"	12	
9/15/40316	AA2816	17	VALVE ROCKER WITH BALL	"	12	Not supplied as Spares
	A75414		Rocker, Valve	"	12	
9/15/40255	Z11023		Bush	"	12	
9/15/40260	A75905	18	Screw, Adjusting... ..	"	12	
9/15/40252	Z1/32033	19	Locknut, Special, $\frac{1}{8}$ " Gas	"	12	
	85-34	20	Nut, Plain, $\frac{3}{8}$ " B.S.F.	"	6	Valve Rocker
	85-35	21	Nut, Plain, $\frac{7}{16}$ " B.S.F.	"	6	Valve Rocker Shaft to Cylinder Head
9/15/40270	A16416	22	Tappet, Valve	"	12	
9/15/40271	A16505	23	Thimble, Valve	"	12	
9/15/40240	AA4422	24	PUSH ROD COMPLETE	"	12	
9/15/35493	A15340	50	Camshaft	"	1	} Camshaft
9/15/35481	A16138	51	Bearing, Front	"	1	
9/15/35482	A16247	52	Bearing, Intermediate, Centre and Rear	"	6	
9/15/35588	A16314	53	Screw Dowel	"	6	
9/15/35589	A16313	54	Screw Dowel, Hollow	"	1	
9/15/40305	138-151	55	Washer, Copper, $\frac{3}{4}$ " $\times 15 \times 1$ m/m., Special	"	7	
9/15/35602	A1/15408	56	Gear Wheel	"	1	
9/15/35491	Z15/30707	57	Setscrew, Special, $\frac{3}{8}$ " B.S.F. $\times 2\frac{1}{16}$ " Long	"	4	
9/15/35600	Z1/44776	58	Tabwasher, Special, $\frac{3}{8}$ " Dia.	"	4	
9/15/35601	A15465	59	Bevel, Spiral, Driving	"	1	
9/15/35369	156-79	60	Key, Special, $\frac{1}{4}$ " $\times 0-187$ " $\times \frac{1}{8}$ "	"	1	
9/15/35567	Z3/32016	61	Nut, Special, $\frac{3}{8}$ " B.S.F.	"	1	
	100-18	62	Split Pin, $\frac{5}{32}$ " $\times 1\frac{1}{2}$ "	"	1	
9/15/35543	AA6320		IDLER GEAR COMPLETE	"	1	
9/15/35544	A15498		Gear Wheel... ..	"	1	
9/15/35552	Z1/10126	29	Bush	"	2	
9/15/35592	A80932	39	Spindle	"	1	Idler Gear
9/15/35582	103-93	40	Plug, $\frac{3}{8}$ " B.S.F.	"	1	
9/15/35563	A3/19440	41	Joint	"	As req.	} Idler Gear Spindle
9/15/35590	Z1/46571	42	Shim, 0-036"	"		
9/15/35591	Z1/46572		Shim, 0-018"	"		
9/15/35583	Z3/43722	44	Setscrew, Special, $\frac{5}{16}$ " B.S.F. $\times \frac{3}{8}$ "	"	3	
	219-21	43	Wire, Locking, Iron, 16 S.W.G.	"	10"	
9/15/35603	A15477	45	Gear Wheel	"	1	} Oil Pump Idler Wheel
9/15/35593	A80941	46	Spindle	"	1	
9/15/35492	Z11024	47	Bush	"	2	
9/15/34200	Z31992	48	Nut, Special, $\frac{5}{8}$ " B.S.F., Slotted	"	1	
	100-16	49	Split Pin, $\frac{1}{8}$ " $\times 1\frac{3}{8}$ "	"	1	

NOTE:—Part Numbers A15340 to 100-16 also form part of Complete Crankcase AA6944, page A.6

B.R. Cat. No.	A.E.C. Basic Part No.	Plate Ref.	Designation	Used on	No. Req. per Engine	Remarks
		A2	ENGINE—Continued	All Models		
9/15/35352	AB2706		BEVEL DRIVE CASING COMPLETE ...	"	1	
9/15/35356	AB2707		BEVEL DRIVE CASING WITH STUDS ...	"	1	
	A33124	63	Casing	"	1	Not supplied as Spares
9/15/35357	Z1/44003	64	Dowel, Special	"	1	
9/15/35358	Z7/30521	65	Stud, Special, $\frac{1}{4}$ " B.S.F. \times $1\frac{1}{8}$ "	"	4	Housing
9/15/58209	I24-1126	66	Stud, $\frac{5}{16}$ " B.S.F. \times $1\frac{1}{2}$ ", Special	"	3	Generator
9/15/35365	A2/75197	67	Housing, Bush and Seal	"	1	
9/15/35377	Z2/46571	68	Shim, 0-002"	"	As req.	Housing to Casing
9/15/35378	Z2/46572		Shim, 0-003"	"		
9/15/35379	Z2/46573		Shim, 0-015"	"		
9/15/35368	A4/19411	69	Joint	"		
9/15/35373	Z2/32049	70	Nut, Lock, $\frac{1}{2}$ " B.S.F.	"	4	
	Z3/30616	71	Washer, Grover, $\frac{1}{2}$ "	"	4	
9/15/35354	Z1/10141	72	Bush	"	1	
9/15/35374	Z1/44565	73	Plug, End	"	1	Bevel Casing
9/15/35382	I38-144	74	Washer, Copper, $27 \times 34 \times 2.5$ m/m., Special	"	1	To mesh with A15465, page A.4
9/15/35388	A15466	75	Bevel, Spiral, Driven	"		
9/15/35369	I56-79	76	Key, Special, $\frac{1}{4}$ " \times $0-187$ " \times $\frac{5}{8}$ "	"	1	
9/15/35371	Z2/31927	77	Nut, Special, $\frac{7}{8}$ " \times 16 T.P.I....	"	1	
9/15/35386	Z1/44703	78	Tabwasher, Special, 22-5 m/m. Dia.	"	1	
9/15/35381	A76988	79	Spindle	"	1	
9/15/35380	A64001	80	Sleeve	"	1	Spiral Bevel Wheel
9/15/35369	I56-79	81	Key, Special, $\frac{1}{4}$ " \times $0-187$ " \times $\frac{5}{8}$ "	"	1	
	Z1/31960	82	Nut, Plain, $\frac{5}{8}$ " B.S.F.	"	1	
9/15/35387	Z1/44736	83	Tabwasher, Special, $\frac{3}{32}$ " Dia.	"	1	
9/15/35376	5091-3	84	Oil Seal, "Gaco", No. MIS.114	"	1	
9/15/35353	I31-107	85	Adaptor, Special	"	1	Oil Pipe Adaptor—
9/15/35383	I38-156	86	Washer, Copper, $\frac{17}{32}$ " \times $\frac{3}{4}$ " \times $\frac{1}{16}$ ", Special	"	1	Bevel Casing
9/15/35680	A3/75130	87	Cover	"	1	
9/15/35367	A4/19477	88	Joint	"	1	Bevel Drive Housing
9/15/35681	Z13/30782		Setscrew, 2 B.A. \times $\frac{1}{2}$ "	"	4	Cover
	Z4/30698	90	Washer, Grover, 2 B.A., Light Pattern	"	4	
9/15/35360	A1/4728	91/92	COUPLING COMPLETE	"	1	
9/15/35682	Z43334	93	Rivet, Special	"	6	Fuel Pump Drive
9/15/35391	A23032	94	Coupling, Centre, Rubber	"	1	
9/15/35392	A1/22892	95	Coupling, Internal Half	"	1	
9/15/35399	Z2/46574	96	Shim, 0-002"	"	As req.	Bevel Drive Casing to Engine Casing. For Studs, see page A.6
9/15/35400	Z2/46575		Shim, 0-003"	"		
9/15/35401	Z2/46576		Shim, 0-015"	"		
9/15/35393	A4/19412	97	Joint	"		
9/15/35389	Z18/30718	98	Bolt, Special, $\frac{1}{2}$ " B.S.F. \times $4\frac{3}{8}$ "	"	1	
9/15/35390	Z18/30714		Bolt, Special, $\frac{5}{16}$ " B.S.F. \times $4\frac{1}{4}$ "	"	1	
	Z2/32047	99	Nut, $\frac{5}{8}$ " B.S.F.	"	6	
	Z4/30688	100	Washer, Thackray, $\frac{5}{16}$ "	"	8	
9/15/35683	A10/2226	101	OIL PIPE COMPLETE	"	1	Front Camshaft Bearing to Bevel Drive Casing

B.R. Cat. No.	A.E.C. Basic Part No.	Plate Ref.	Designation	Used on	No. Req. per Engine	Remarks
		A3	ENGINE—Continued	All Models		
9/15/35685	AA6944		CRANKCASE AND CYLINDER BLOCK MONO TYPE COMPLETE	"	1	
9/15/35686	A9194		CRANKCASE WITH BEARING CAPS, LINERS AND STUDS	"	1	
9/15/35497	A9175		CRANKCASE WITH BEARING CAPS AND LINERS	"	1	
	A1/17174	1	Crankcase, Bare	"	1	Not supplied as Spares
9/15/35512	Z1/44564	2	Core Plug, Special, 48 m/m. Dia.	"	4	
9/15/35687	138-223	3	Washer, Copper, 48 x 60 x 3 m/m., Special...	"	4	
9/15/35513	Z1/44555	4	Core Plug, Special, 1 1/2" Dia., 16 T.P.I. ...	"	11	
9/15/35688	138-211	5	Washer, Copper, 32 x 40 x 2 m/m., Special...	"	11	
9/15/35689	103-211		Core Plug, Special, 1 1/4" Dia., 16 T.P.I. ...	"	4	
9/15/35506	A1/57172	6	Liner	"	6	
9/15/35509	A2/75171	7	Plate, Cover	"	1	Water Jacket—Front
9/15/35504	A4/19407	9	Joint	"	1	
9/15/35517	Z7/30505	8	Stud, Special, 7/16" B.S.F. x 7/8"	"	5	
9/15/35508	Z2/32006	10	Nut, Lock, 5/16"	"	5	
	Z4/30692	11	Washer, Grover, 5/16"	"	5	
9/15/35690	A1/14418A	12	Cap, Bearing, Front	"	1	
9/15/35691	A1/14432A	13	Cap, Bearing, Intermediate	"	4	
9/15/35692	A1/14431A	14	Cap, Bearing, Centre	"	1	
9/15/35693	A1/14433A	15	Cap, Bearing, Rear	"	1	
9/15/35503	Z1/44062	16	Dowel	"	14	
9/15/35515	Z3/43778	17	Setscrew, Special, 1 1/16" B.S.F. x 9"	"	2	Bearing Cap Fixing
9/15/35514	Z3/43777	18	Setscrew, Special, 1 1/16" B.S.F. x 7 3/16"	"	14	
	219-25	19	Wire, Locking, Iron, 16 S.W.G.	"	As req.	
9/15/35510	A2/75172	20	Plate, Cover	"	1	Water Jacket
9/15/35505	A4/19409	21	Joint	"	1	
9/15/35516	Z43797	22	Setscrew, Special, 5/16" B.S.F. x 21 m/m. ...	"	6	
9/15/40305	138-151	23	Washer, Copper, 2 1/4" x 15 x 1 m/m., Special	"	6	
9/15/35531	Z8/30530	24	Stud, Special, 1/2" B.S.F. x 6 7/32"	"	12	
9/15/35532	Z8/30531	25	Stud, Special, 1/2" B.S.F. x 5 13/32"	"	28	
9/15/35527	Z8/30533	24	Stud, Special, 1/2" B.S.F. x 6 7/32"	"		Alternative to Z8/30530 Alternative to Z8/30531
9/15/35694	Z8/30534	25	Stud, Special, 1/2" B.S.F. x 5 13/32" ... } Oversize	"	As req.	
9/15/35519	124-1213	26	Stud, 1/2" B.S.F. x 1 3/4"	"	4	Engine Front Support
9/15/35527	Z7/30533	28	Stud, Special, 1/2" B.S.F. x 3 3/8"	"	5	Rear Mounting Plate
9/15/35525	Z7/30552	29	Stud, Special, 1/2" B.S.F. x 3 5/16"	"	3	Rear Mounting Plate— Through Ring Dowel
9/15/35533	Z3/30545	30	Stud, Special, 1/2" B.S.F. x 100 m/m.	"	4	Engine Casing Extension
9/15/35534	Z5/30590	31	Stud, Special, 3/8" B.S.F. x 1 1/8"	"	3	Water Jacket Cover
9/15/35535	Z6/30501		Stud, Special, 3/8" B.S.F. x 1 3/8"	"	2	Plate—Rear
9/15/35520	Z7/30517	32	Stud, Special, 1/2" B.S.F. x 2 1/4"	"	1	Ring Dowel, Short
9/15/35521	Z6/30516	33	Stud, Special, 1/2" B.S.F. x 2"	"	1	Short
9/15/35522	Z7/30518	34	Stud, Special, 1/2" B.S.F. x 3 3/8"	"	1	Ring Dowel, Long
				"		Long
9/15/35523	Z7/30519	35	Stud, Special, 1/2" B.S.F. x 3 7/8"	"	1	Fuel Pump Bracket
9/15/35524	Z7/30503	36	Stud, Special, 5/16" B.S.F. x 2 1/2"	"	1	
9/15/35530	Z6/30521	37	Stud, Special, 5/16" B.S.F. x 1 3/8"	"	4	Bevel Drive Case
9/15/35524	Z7/30503	38	Stud, Special, 5/16" B.S.F. x 2 1/2"	"	2	
9/15/35534	Z5/30590	39	Stud, Special, 3/8" B.S.F. x 1 1/8"	"	6	Cover Plate

B.R. Cat. No.	A.E.C. Basic Part No.	Plate Ref.	Designation	Used on	No. Req. per Engine	Remarks
		A3	ENGINE—Continued	All Models		
			CRANKCASE AND CYLINDER BLOCK			
			MONO TYPE—Continued			
9 15/35486	A3/13701	40	Bearing, Main, Front	"	1	} Top Half
9 15/35488	A3/13702	41	Bearing, Main, Intermediate	"	4	
9 15/35484	A1/14295	42	Bearing, Main, Centre	"	1	
9 15/35490	A1/14746	43	Bearing, Main, Rear	"	1	} Bottom Half
9 15/35485	A2/13798	44	Bearing, Main, Front	"	1	
9 15/35487	A3/13700	45	Bearing, Main, Intermediate	"	4	
9 15/35483	A1/14296	46	Bearing, Main, Centre	"	1	} Main Bearing
9 15/35489	A1/14745	47	Bearing, Main, Rear	"	1	
9 15/35540	Z44093	} 48	Dowel (Bearing Shells)	"	14	
9 15/35357	Z1/44003		Dowel (Bearing Caps)	"	7	
9 15/35509	A2/75171	49	Plate, Cover... ..	"	1	} Camshaft Cover—Rear
9 15/35504	A4/19407	50	Joint... ..	"	1	
9 15/35516	Z43797	53	Setscrew, Special, $\frac{5}{16}$ " B.S.F. x 21 m/m.	"	5	
9 15/40305	138-151	54	Washer, Copper, $\frac{3}{4}$ " x 15 x 1 m/m., Special	"	5	} Water Jacket
9 15/35510	A2/75172	55	Plate, Cover... ..	"	1	
9 15/35505	A4/19409	56	Joint... ..	"	1	
9 15/35516	Z43797	57	Setscrew, Special, $\frac{5}{16}$ " B.S.F. x 21 m/m.	"	6	} Cover Plate and Timing Pointer
9 15/40305	138-151	58	Washer, Copper, $\frac{3}{4}$ " x 15 x 1 m/m., Special	"	6	
9 15/35587	Z6/30588		Stud, Special, $\frac{3}{8}$ " B.S.F. x 41 m/m.	"	2	
9 15/35578	A2/75177	59	Plate, Cover... ..	"	1	} Water Jacket—Rear
9 15/35562	A4/19406	60	Joint... ..	"	1	
	Z32034	61	Nut, Plain, $\frac{3}{8}$ " B.S.F.	"	5	
	Z4/30696	62	Washer, Grover, $\frac{3}{8}$ "	"	5	} Cover Plate to Engine Casing
9 15/35577	A2/75178	63	Plate, Cover... ..	"	1	
9 15/35559	A4/19419	64	Joint... ..	"	1	
	Z32034	65	Nut, Plain, $\frac{3}{8}$ " B.S.F.	"	6	} Blanking Plate to Engine Casing
	Z4/30696	66	Washer, Grover, $\frac{3}{8}$ "	"	6	
9 15/35699	A2/75188		Plate, Blanking	"	1	
9 15/35558	A4/19427		Joint... ..	"	1	} Valve Rocker Shaft
9 15/35586	Z11/30779		Setscrew, $\frac{5}{16}$ " B.S.F. x $\frac{3}{4}$ "	"	2	
	Z4/30692		Washer, Grover, $\frac{5}{16}$ "	"	2	
9 15/35574	A7/2202	67	OIL FEED PIPE COMPLETE	"	3	} Oil Feed Pipe
9 15/35571	G25250	68	Pin, Banjo	"	3	
9 15/34230	A74603	69	Washer, Copper, 14.5 x 21 x 2 m/m., Special	"	3	
9 15/35698	138-139	70	Washer, Copper, 10 x 21 x 2 m/m., Special	"	3	} Push Rod Chamber
	219-21	71	Wire, Locking, Iron, 16 S.W.G.	"	3' 0"	
9 15/35538	Z4/31319	72	Clip	"	2	
9 15/35581	Z1/44568	73	Core Plug, Special	"	1	} Engine Casing Extension
9 15/35688	138-211	74	Washer, Copper, 32 x 40 x 2 m/m., Special	"	1	
	219-21	71	Wire, Locking, Iron, 16 S.W.G.	"	1	
9 15/35541	Z1/44078	75	Dowel, Special	"	1	
9 15/35542	A72907	76	Lifting Eye	"	1	
9 15/35697	138-158	77	Washer, Copper, 21 x 29 m/m. x $\frac{3}{32}$ ", Special	"	1	

B.R. Cat. No.	A.E.C. Basic Part No.	Plate Ref.	Designation	Used on	No. Req. per Engine	Remarks
		A3	ENGINE—Continued	All Models		
9/15/35613	A2/75160	78	Cover, Push Rod	"	2	} Push Rod Cover to Engine Casing
9/15/35619	A3/19493	79	Joint, Cover ...	"	2	
9/15/35662	Z43741	80	Setscrew, Special, $\frac{5}{16}$ " B.S.F. \times 24 m/m.	"	44	
9/15/35675	Z1/44740	81	Lockwasher, Special, $\frac{1}{32}$ " Dia.	"	44	
9/15/35615	A78402	82	Guide, Push Rod	"	2	} Push Rod Guides
9/15/35663	Z2/43748	83	Setscrew, $\frac{5}{16}$ " B.S.F. \times $\frac{3}{8}$ "	"	6	
	134-3	84	Washer, Plain, $\frac{5}{16}$ "	"	6	
	135-21	85	Wire, Locking, Iron, 16 S.W.G.	"	As Req.	
9/15/35668	A74845	86	Rubbing Strip, Top and Bottom	"	2	
9/15/35659	A11043	88	Pointer, Timing	"	1	
	85-33		Nut, Plain, $\frac{5}{16}$ " B.S.F.	"	2	} For Studs, see Page A7
	135-33		Washer, Grover, $\frac{5}{16}$ "	"	2	
9/15/35650	A1/59361	} 89	Support, Front	"	1	} Mounting Spigot Housing
9/15/35639	A1/59362		Support, Front	"	1	
9/15/35637	A88032	} 92	Bush, "Metalastik", 13/901	"	1	} Front Support
9/15/35700	Z6/30673		Washer, Retaining, Special	"	1	
	121-155		Setscrew, $\frac{5}{8}$ " B.S.F. \times $1\frac{1}{2}$ "	"	1	} Bush Retaining
	135-38		Washer, Grover, $\frac{5}{8}$ "	"	1	
9/15/35609	Z2/30718		Setscrew, $\frac{5}{8}$ " B.S.F. \times $2\frac{1}{8}$ "	"	2	} Housing to Front Support
	135-38		Washer, Grover, $\frac{5}{8}$ "	"	2	
	219-21		Wire, Locking, Iron, 16 S.W.G.	"	12"	} Front Support to Engine Casing
	85-36		Nut, Plain, $\frac{1}{2}$ " B.S.F.	"	4	
	135-36		Washer, Grover, $\frac{1}{2}$ "	"	4	
9/15/35701	AB3518		REAR MOUNTING PLATE COMPLETE	"	1	} Rear Mounting Plate
9/15/35702	AB3517		MOUNTING PLATE WITH BUSH	"	1	
9/15/35703	Z3/10253		Bush	"	2	
9/15/32191	A88031		Bush, "Metalastik", 13/1055	"	2	
9/15/35630	341-1668		Plate, Engine Type and Serial No.	"	1	
9/15/94057	341-168		Screw, Drive, Parker Kalon, No. 10 \times $\frac{3}{8}$ "	"	2	
9/15/35706	341-1730		Plate, Engine History	"	1	} British Railways Issue Drg. (Derby) DVI86
	Z6/30798		Setscrew, 2 B.A. \times $\frac{3}{8}$ "	"	2	
9/15/40151	255-46		Washer, Lead, 5 \times 10 \times 1 m/m., Special	"	4	} Engine History Plate
	219-24		Wire, Locking, Iron, 18 S.W.G.	"	As req.	

B.R. Cat. No.	A.E.C. Basic Part No.	Plate Ref.	Designation	Used on	No. Req. per Engine	Remarks
		A4	ENGINE—Continued	All Models		
9/15/30575	A1/7634		CRANKSHAFT COMPLETE	"	1	
9/15/30585	A14964	1	Crankshaft, Bare	"	1	
9/15/30584	A74312	2	Cap, Crank Pin End	"	12	
9/15/30583	A74412	3	Bolt, Special, $\frac{3}{8}$ " B.S.F. \times 95-5 m/m.	"	6	
	86-34	4	Nut, Slotted, $\frac{3}{8}$ " B.S.F.	"	6	} Crank Pin End Cap
9/15/30600	A74602	5	Washer, Special, 15 m/m. \times $\frac{3}{32}$ " \times 10 m/m.	"	18	
	100-4	6	Split Pin, $\frac{1}{16}$ " \times 1"	"	6	
9/15/30601	A56708	7	Washer, Locating, Front	"	1	
9/15/30593	A74719	8	Pinion, Driving	"	1	
9/15/30590	Z1/43119	9	Key, Special	"	1	} Driving Pinion
9/15/30591	Z2/31950	10	Locknut, Special	"	1	
9/15/30602	Z1/44762	11	Lockwasher, Special	"	1	
9/15/30603	A56709	12	Washer, Locating, Rear	"	1	
9/15/30587	Z2/44021	13	Dowel, Special, $\frac{3}{32}$ " \times $\frac{7}{8}$ "	"	1	
9/15/30596	A21791	14	Pulley, Crankshaft	"	1	Locating Washer
9/15/30589	Z1/43108	15	Key, Special	"	1	
9/15/30598	Z1/43754	16	Setscrew, Special, $\frac{7}{8}$ " 16 T.P.I. \times 36 m/m.	"	1	} Crankshaft Pulley
9/15/30604	Z3/30602	17	Washer, Special	"	1	
9/15/30594	Z1/44739	18	Plate, Locking	"	1	
9/15/30582	I21-103	19	Setscrew, $\frac{1}{4}$ " B.S.F. \times $\frac{3}{8}$ "	"	2	} Locking Plate to Pulley
	85-32	} 20	Nut, Plain, $\frac{1}{2}$ " B.S.F.	"	2	
	I35-32		Washer, Grover, $\frac{1}{2}$ "	"	2	
9/15/30586	Z44018	21	Dowel, Special	"	1	} Flywheel
9/15/30581	Z1/30716	22	Bolt, Special, $\frac{1}{2}$ " B.S.F. \times 38 m/m.	"	6	
9/15/30588	A74962	23	Housing, Oil Seal	"	1	} Crankshaft Pulley
9/15/30599	5091-32	24	Oil Seal, $1\frac{7}{8}$" \times $2\frac{3}{4}$" \times $\frac{1}{2}$" Wide, Weston	"	1	
9/15/30620	5092-45		"O" Ring, Gaco, No. R180	"	1	
9/15/38046	A5/5514		PISTON COMPLETE	"	6	
9/15/38050	A6/11538	25	Piston, Bare, Wellworthy	"	6	
9/15/38051	A4/11656	26	Ring, Compression, Top Groove	"	6	} Piston
9/15/38052	A4/11641	27	Ring, Compression	"	12	
9/15/38053	A4/11640	28	Ring, Scraper	"	12	
9/15/38048	A1/11705	29	Pin, Gudgeon	"	6	
	99-217	30	Circlip, Seeger, 45 m/m. G.P. Dia.	"	12	
9/15/38032	A2/56095		CONNECTING ROD COMPLETE	"	6	} Not supplied as Spares
	A11954	31	Connecting Rod, Bare	"	6	
	A12050	32	Cap Connecting Rod, Bare	"	6	
9/15/38061	A44425	34	Bush, Small End	"	6	
9/15/59240	A12322	36	Bolt, Special	"	12	
9/15/38041	A54606	37	Nut, Special, Slotted, $\frac{1}{2}$ " B.S.F.	"	12	
9/15/38033	A1/12106	33	Bearing	"	6 prs.	
9/15/38062	Z2/44002	35	Dowel	"	12	
9/15/38042	Z1/47007	38	Split Pin, Special	"	12	

B.R. Cat. No.	A.E.C. Basic Part No.	Plate Ref.	Designation	Used on	No. Req. per Engine	Remarks
		A5	ENGINE—Continued	All Models		
9/15/35708	AB3026		ENGINE EXTENSION CASING COMPLETE		1	
9/15/35424	AB3014		EXTENSION CASING WITH INSERTS		1	
	A62607	1	Extension Casing, Bare ...		1	Not supplied as Spares
9/15/35709	Z1/44035		Dowel, Special, 0-373" Dia. x $\frac{5}{8}$ "		3	
9/15/35437	Z7/30529	5	Stud, Special, B.S.F. x $2\frac{1}{8}$ "		2	Rear Engine Case
9/15/35438	Z6/30591	6	Stud, Special, B.S.F. x $1\frac{1}{8}$ "		4	Oil Filler Pipe
9/15/35435	Z6/30574	7	Stud, Special, B.S.F. x $1\frac{1}{8}$ "		34	Crankcase, Bottom Half
9/15/35438	Z6/30591	8	Stud, Special, B.S.F. x $1\frac{1}{8}$ "		2	
9/15/35436	Z6/30503		Stud, Special, B.S.F. x $3\frac{1}{8}$ "		2	
9/15/35434	Z7/30506	9	Stud, Special, $\frac{5}{16}$ " B.S.F. x $2\frac{1}{8}$ "		2	Oil Release Valve
9/15/35439	Z6/30520	10	Stud, Special, $\frac{5}{16}$ " B.S.F. x $2\frac{1}{8}$ "		1	Oil Filter Connection
9/15/35440	Z5/30599	11	Stud, Special, $\frac{5}{16}$ " B.S.F. x $1\frac{1}{2}$ "		2	
9/15/35433	125-122	12	Stud, $\frac{5}{16}$ " B.S.F. x $1\frac{3}{8}$ ", Special		2	Breather Pipe
9/15/33081	Z44564	13	Plug, Drain ...		1	
9/15/33083	138-16	14	Washer, C. & A., 34 x 44 x 3 m/m., Special		1	
	219-21	15	Wire, Locking, Iron, 16 S.W.G.		12"	
9/15/35710	103-202		Plug, Drain, Flush ...		1	
9/15/35711	138-172		Washer, Copper, 21 x 27 x 2 m/m., Special		1	
9/15/35448	A3/19492	16	Joint ...		1	Extension Casing
	Z32034	17	Nut, Plain, $\frac{3}{8}$ " B.S.F.		2	Rear End
	Z4/30696	18	Washer, Grover, $\frac{3}{8}$ "		2	
9/15/58200	Z18/30730	19	Bolt, Special, $\frac{3}{8}$ " B.S.F. x $1\frac{5}{8}$ "		12	Engine Casing and Internal Oil Grids
9/15/35455	Z43778	20	Setscrew, Special, $\frac{3}{8}$ " B.S.F. x $1\frac{1}{8}$ "		1	
9/15/30600	A74602	22	Washer, Copper, 15 m/m. x $\frac{3}{32}$ " x 10 m/m., Special		15	
9/15/35411	Z1/30756	24	Bolt, Special, $\frac{3}{8}$ " B.S.F. x $1\frac{3}{8}$ "		4	Extension Casing to Engine Casing
9/15/35412	Z12/30728	25	Bolt, Special, $\frac{3}{8}$ " B.S.F. x $1\frac{5}{8}$ "		8	
9/15/35413	Z12/30764		Bolt, Special, $\frac{3}{8}$ " B.S.F. x $1\frac{1}{2}$ "		1	
	Z32034	26	Nut, Plain, $\frac{3}{8}$ " B.S.F.		12	
	Z4/30686	27	Washer, Thackray, $\frac{3}{8}$ "		12	
9/15/35456	Z14/30793	28	Setscrew, $\frac{3}{8}$ " B.S.F. x $3\frac{3}{8}$ "		1	Front End
9/15/35457	Z2/30750	29	Setscrew, $\frac{3}{8}$ " B.S.F. x $2\frac{1}{8}$ "		1	
9/15/35458	Z4/30728	30	Setscrew, $\frac{3}{8}$ " B.S.F. x $1\frac{3}{8}$ "		1	
9/15/35459	Z11/30783	31	Setscrew, $\frac{3}{8}$ " B.S.F. x $1\frac{1}{8}$ "		6	5 Front, 1 Rear
9/15/35460	Z15/30721	32	Setscrew, $\frac{3}{8}$ " B.S.F. x $9\frac{1}{4}$ "		1	
	Z4/30686	33	Washer, Thackray, $\frac{3}{8}$ "		10	
	219-21	34	Wire, Locking, Iron, 16 S.W.G.		4' 2"	
9/15/35445	A78691	35	Oil Grid, Internal, Front		1	Extension Casing
9/15/35446	A78692	36	Oil Grid, Internal, Rear		1	
9/15/35462	AB3406	37	SUPPORT STRIP COMPLETE, FRONT		1	Internal Oil Grid
9/15/35465	AB3407	38	SUPPORT STRIP COMPLETE, REAR		1	
9/15/35414	A7/2245	39	BREATHER PIPE COMPLETE		1	Extension Casing
9/15/35449	251-11	41	Joint ...		1	
	90-164	42	Locknut, $\frac{5}{16}$ " B.S.F., "Simmonds" Nyloc NP-F106...		2	

B.R. Cat. No.	A.E.C. Basic Part No.	Plate Ref.	Designation	Used on	No. Req. per Engine	Remarks	
		A5	ENGINE—Continued	All Models			
9/15/33069	A2/2947		CRANKCASE BOTTOM HALF COMPLETE	"	1		
9/15/33091	A2/2948		CRANKCASE BOTTOM HALF WITH STARTER CAP	"	1		
	A1/17253	44	Crankcase, Bare ...	"	1	Not supplied as Spares	
9/15/33093	V18424	45	Cap, Starter ...	"	1		
9/15/33095	Z7/30513	46	Stud, Special, $\frac{1}{2}$ " B.S.F. $\times 4\frac{1}{2}$ "	"	2	} Starter Cap	
	Z2/32044	47	Nut, Plain, $\frac{1}{2}$ " B.S.F.	"	2		
	Z5/30609	48	Washer, Thackray, $\frac{1}{2}$ "	"	2		
9/15/33077	AA2535		COVER PLATE COMPLETE	"	1		
9/15/33080	A73237	49	Plate ...	"	1	} Cover Plate	
9/15/33081	Z44564	50	Plug, Drain ...	"	1		
9/15/33078	Z50015	51	Adaptor, Drain Plug ...	"	1		
9/15/33083	138-16	52	Washer, C. & A., 34 \times 44 \times 3 m/m., Special ...	"	1		
9/15/33079	219-47	53	Dowel, Steel, $\frac{5}{32}$ "	"	1		
9/15/35712	125-198	} 54	Stud, Special, $\frac{7}{16}$ " B.S.F. $\times 3\frac{3}{8}$ "	} Alternatives	} 3		} Undrilled
9/15/33082	Z7/30525		Stud, Special, $\frac{7}{16}$ " B.S.F. $\times 3\frac{1}{2}$ "				
	100-14	55	Split Pin, $\frac{1}{8}$ " $\times 1\frac{1}{2}$ "	"	3		} Drilled
9/15/33084	Z44505	56	Plug, Core ...	"	2		
9/15/33074	A73313	57	Joint, Cover Plate	"	1		} Fuel Filter Bracket
9/15/33085	Z5/30594	} 58	Stud, Special, $\frac{5}{16}$ " B.S.F. $\times 1\frac{5}{8}$ "	"	11		
9/15/35434	Z7/30506		Stud, Special, $\frac{5}{16}$ " B.S.F. $\times 2\frac{1}{8}$ "	"	4		
	Z2/32047	59	Nut, Plain, $\frac{5}{16}$ " B.S.F.	"	15	} Cover Plate to Bottom Half	
	Z4/30688	60	Washer, Thackray, $\frac{5}{16}$ "	"	15		
9/15/33086	Z5/30509		Stud, Special, $\frac{5}{16}$ " B.S.F. $\times 1\frac{3}{16}$ "	"	1	} Air Compressor	
	Z1/32063		Nut, Slotted, $\frac{5}{16}$ " B.S.F.	"	1		
9/15/34251	Z8/30546		Stud, Special, $\frac{3}{8}$ " and $\frac{1}{2}$ " B.S.F. Ends	"	1		
9/15/33073	Z1/44080	61	Dowel ...	"	2	} Crankcase to Extension	
9/15/33100	AA2440	62	GAUZE BOX COMPLETE	"	1		
9/15/33120	AA8335	63	GAUZE BOX COVER COMPLETE	"	1	} Gauze Box Cover to Gauze Box	
9/15/33098	Z2/43712	64	Bolt, Special, $\frac{1}{4}$ " B.S.F. $\times \frac{1}{2}$ ", Drilled	"	4		
	86-32	65	Nut, Slotted, $\frac{1}{4}$ " B.S.F.	"	4		
	134-2	66	Washer, Plain, $\frac{1}{4}$ "	"	4		
	100-4	67	Split Pin, $\frac{1}{16}$ " $\times 1$ "	"	4	} Gauze Box to Cover Plate	
9/15/33099	Z7/30769	68	Bolt, Special, $\frac{5}{16}$ " B.S.F. $\times 1\frac{1}{4}$ ", Drilled	"	2		
	86-33	69	Nut, Slotted, $\frac{5}{16}$ " B.S.F.	"	2		
9/15/40305	138-151	70	Washer, Copper, $\frac{21}{64}$ " $\times 15 \times 1$ m/m., Special	"	4	} Oil Suction Pipe Extension	
	100-7	71	Split Pin, $\frac{5}{64}$ " $\times \frac{3}{4}$ "	"	2		
9/15/33132	A8/2249	72	OIL SUCTION PIPE EXTENSION	"	1	} Oil Suction Pipe Extension	
	101-6	73	Pin, Taper, $\frac{1}{8}$ " $\times 1$ " 1-30 Taper	"	1		
9/15/33133	Z45439	74	Spring ...	"	1		
9/15/33134	Z1/43226	75	Washer, Sealing, Special	"	1		
9/15/33135	Z30679	76	Washer, Special, 16 S.W.G.	"	1	} Fuel Filter	
9/15/33137	AA6006	71	MOUNTING PLATE COMPLETE	"	1		
	219-21	A5	Wire, Locking, Iron, 16 S.W.G.	"	12"	} Crankcase Bottom Half to Extension Casing	
9/15/33182	A3/19497	77	Joint ...	"	1		
	Z32034	78	Nut, Plain, $\frac{3}{8}$ " B.S.F.	"	38		
	Z4/30696	79	Washer, Grover, $\frac{3}{8}$ "	"	38		

B.R. Cat. No.	A.E.C. Basic Part No.	Plate Ref.	Designation	Used on	No. Req. per Engine	Remarks
		A5	ENGINE—Continued			
9/15/33150	S1439		OIL FILLER AND CAP COMPLETE	All Models	1	Oil Filler and Cap
9/15/33152	S1437		FILLER CAP COMPLETE	"	1	
9/15/33153	S10639	80	Cap	"	1	
9/15/35714	Z5/30684	81	Washer, Special, 3 $\frac{1}{4}$ " O/D. 2 $\frac{3}{2}$ " I/D.	"	1	
9/15/35715	Z30898	82	Retainer	"	1	
	148-18	83	Setscrew, No. 2 B.A. $\times \frac{9}{16}$ "	"	1	
	149-14	84	Nut, Plain, No. 2 B.A.	"	1	
9/15/33154	S14603	85	Handle, Lifting	"	1	
9/15/33161	Z2/45477	86	Spring, Cap to Body	"	2	
9/15/33158	Z47095	87	Pin, Cap Spring	"	1	
9/15/33157	Z47076	88	Pin, Body Spring	"	1	
9/15/42096	Z2/30652	89	Washer, Steel Bright, $\frac{3}{8}$ "	"	2	
	Z4/30686	90	Washer, Thackray, $\frac{3}{8}$ "	"	2	
	100-100	91	Split Pin, $\frac{3}{8}$ " $\times \frac{7}{8}$ "	"	2	
9/15/33151	A19752	92	Body, Oil Filler	"	1	
9/15/33166	125-155	93	Stud, $\frac{3}{8}$ " B.S.F. $\times 1\frac{7}{8}$ ", Special	"	2	
9/15/33165	Z1/47023	94	Pin, Spring	"	1	
9/15/33175	AB2503	95	OIL FILLER TUBE COMPLETE	A220AC/AJ/AZ/BB	1	Length 2' 3 $\frac{1}{8}$ "
9/15/33177	AB2501		OIL FILLER TUBE COMPLETE	A220AK/AL	1	
9/15/33172	A4/19418	96	Joint	All Models	1	Filler Tube to Extension Casing
	Z32034	97	Nut, Plain, $\frac{3}{8}$ " B.S.F.	"	4	
	Z4/30696	98	Washer, Grover, $\frac{3}{8}$ "	"	4	
9/15/33171	A4/19405	99	Joint	"	1	Oil Filler Body to Filler Tube
	85-34	100	Nut, Plain, $\frac{3}{8}$ " B.S.F.	"	2	
	135-34	101	Washer, Grover, $\frac{3}{8}$ "	"	2	
9/15/33169	Z15/30748	102	Bolt, $\frac{3}{8}$ " B.S.F. $\times 6\frac{1}{2}$ "	"	1	Oil Filler Tube Clip
	Z32034	103	Nut, Plain, $\frac{3}{8}$ " B.S.F.	"	1	
	Z4/30696	104	Washer, Thackray, $\frac{3}{8}$ "	"	1	
9/15/33140	A1/2546		DIPSTICK COMPLETE	"	1	Dipstick
9/15/35716	A19234	105	Handle	"	1	
9/15/35717	A19096	106	Blade	"	1	
9/15/35718	114-54	107	Rivet, Snap Hd., $\frac{1}{8}$ " $\times \frac{1}{8}$ "	"	1	
9/15/35719	114-65	108	Rivet, Snap Hd., $\frac{1}{8}$ " $\times \frac{1}{8}$ " } Mild Steel	"	1	

B.R. Cat. No.	A.E.C. Basic Part No.	Plate Ref.	Designation	Used on	No. Req. per Engine	Remarks	
9/15/56257	A0561	A6	ENGINE—Continued	All Models			
9/15/56310	AA9303		OIL PUMP COMPLETE	"	1	Pressure and Scavenger	
			OIL PUMP BODY AND COVER COMPLETE	"	1		
9/15/56259	A20729		1	Body, Oil Pump	"	1	
9/15/56270	Z44040		2	Dowel	"	2	Body to Bearing Cap
9/15/56263	A6137		3	OIL PUMP BODY COVER	"	1	Pressure
9/15/56266	A6138		6	OIL PUMP BODY COVER	"	1	Scavenger
9/15/35583	Z3/43722		4	Setscrew, Special, $\frac{5}{16}$ " B.S.F. $\times \frac{3}{8}$ "	"	1	
9/15/56261	Z18/30758		9	Bolt, Special, $\frac{5}{16}$ " B.S.F. $\times 4\frac{5}{16}$ "	"	1	Pressure Cover
	86-33		10	Nut, Slotted, $\frac{5}{16}$ " B.S.F.	"	1	
	100-3		11	Split Pin, $\frac{1}{16}$ " $\times \frac{5}{8}$ "	"	1	
9/15/35583	Z3/43722		7	Setscrew, Special, $\frac{5}{16}$ " B.S.F. $\times \frac{3}{8}$ "	"	1	
9/15/55791	Z5/30792		8	Setscrew, Special, $\frac{5}{16}$ " B.S.F. $\times 1\frac{1}{4}$ "	"	1	
9/15/56261	Z18/30758		9	Bolt, Special, $\frac{5}{16}$ " B.S.F. $\times 4\frac{5}{16}$ "	"	1	Scavenger Cover
	86-33		10	Nut, Slotted, $\frac{5}{16}$ " B.S.F.	"	1	
	100-3		11	Split Pin, $\frac{1}{16}$ " $\times \frac{5}{8}$ "	"	1	
9/15/35492	Z11024		20	Bush	"	1	Pressure
9/15/56262	Z1/10165		21	Bush	"	1	Scavenger
9/15/56290	A21131		13	Spindle	"	1	Driving Gear
9/15/56293	A20828		14	Wheel, Driving, External	"	1	
	157-5		15	Key, Woodruff, No. 5	"	1	
9/15/34200	Z31992		16	Nut, Special, $\frac{9}{16}$ " B.S.F. 9 m/m. Wide	"	1	External Driving Wheel
	100-16		17	Split Pin, $\frac{1}{8}$ " $\times 1\frac{3}{8}$ "	"	1	
9/15/56294	A20827		18	Wheel, Driving, Internal	"	1	Pressure
9/15/56295	A20831		19	Wheel, Driving, Internal	"	1	Scavenger
9/15/56280	156-165		22	Key, Special	"	2	
9/15/56289	A21127		23	Spindle	"	1	Driven Gear
9/15/56288	202-3		24	Snug	"	1	
9/15/56283	Z1/44546		25	Plug, Special... ..	"	1	Driven Gear
9/15/56302	138-1		26	Washer, C. & A., 6-5 \times 10 \times 1-5 m/m., Special	"	1	Spindle
9/15/56284	Z4/46522			Shim, 0.010"	"	As req.	Driving Spindle
9/15/56285	Z4/46523			Shim, 0.003"	"		
9/15/56286	Z4/46524			Shim, 0.002"	"		
9/15/56271	AB0911			DRIVEN GEAR AND BUSH	"	1	Pressure
9/15/56274	AB0912			DRIVEN GEAR AND BUSH	"	1	Scavenger
9/15/56311	A20925		27	Gear	"	1	Pressure
9/15/56312	A20926		28	Gear	"	1	Scavenger
9/15/56272	Z1/10125		29	Bush	"	1	Pressure
9/15/56275	Z1/10114		30	Bush	"	1	Scavenger
9/15/56255	A78213		31	Plunger	"	1	
9/15/56298	Z3/45410	32	Spring	"	1	Oil Release Valve	
9/15/56299	A78207	33	Stop, Spring... ..	"	1		
	100-16	34	Split Pin, $\frac{1}{8}$ " $\times 1\frac{3}{8}$ "	"	1		
9/15/56297	A78310	35	Screw, Adjusting, Special	"	1		
9/15/56250	A2/75167	36	Cover, Adjusting Screw	"	1		
9/15/56254	Z1/44733	37	Plate, Locking	"	1		
9/15/56251	A3/19499	38	Joint	"	2	Oil Release Valve	
	Z2/32047	39	Nut, Plain, $\frac{5}{16}$ " B.S.F.	"	2		
	Z4/30692	40	Washer, Grover, $\frac{5}{16}$ "	"	2		

B.R. Cat. No.	A.E.C. Basic Part No.	Plate Ref.	Designation	Used on	No. Req. per Engine	Remarks
		A6	ENGINE—Continued			
		41-45	OIL DELIVERY PIPE COMPLETE ...	All Models		
9/15/55745	A9/2295		Shim, 0-005" ...	"	1	Pressure Pump
9/15/55756	Z2/46565	46	Shim, 0-010" ...	"	As req.	Front Connection to Oil Pump Body
9/15/55757	Z2/46566		Shim, 0-032" ...	"		
9/15/55758	Z2/46567		Joint ...	"		
9/15/55740	A4/19404	47	Plug, Special ...	"	2	Delivery Pipe
9/15/55755	Z1/44539	48	Washer, Copper, 16-5 x 22 x 2 m/m., Special	"	2	
9/15/56313	138-131	49	Bolt, Special, $\frac{3}{16}$ " B.S.F. x $2\frac{3}{8}$ " ...	"	2	Centre Connection
9/15/55761	Z14/30754	50	Bolt, Special, $\frac{3}{16}$ " B.S.F. x $3\frac{1}{8}$ " ...	"	2	
9/15/55762	Z18/30727		Bolt, Special, $\frac{3}{16}$ " B.S.F. x $1\frac{1}{2}$ " ...	"	8	Intermediate and Rear Connections
9/15/55760	Z7/30712	51	Wire, Locking, Iron, 16 S.W.G. ...	"	As req.	
9/15/55735	A9/2296	52	OIL PIPE AND PLATE COMPLETE	"	1	
9/15/56314	S2/13362	55	Adaptor, Special ...	"	1	Adaptor
9/15/55739	136-37		Lockwasher, $\frac{3}{16}$ " Dia. Hole ...	"		
9/15/55732	81-2034	56	Cone, Union, $\frac{1}{2}$ " O/D. Pipe, Tecalemit Z7152/2	"	1	Pressure Pump Rear Flange Front Connection
9/15/55734	A79009	57	Nut, Union, Special, $\frac{7}{8}$ " B.S.F.	"	1	
9/15/55785	A8/2226	58-60	OIL SUCTION PIPE COMPLETE	"	1	Pressure Pump Rear Flange Front Connection
9/15/55772	A4/19403	61	Joint ...	"	1	
9/15/55790	103-194	62	Plug, $\frac{7}{8}$ " Gas. ...	"	1	As req.
9/15/55795	Z2/46568	63	Shim, 0-005" ...	"	As req.	
9/15/55796	Z2/46569		Shim, 0-010" ...	"		
9/15/55797	Z2/46570		Shim, 0-003" ...	"		
9/15/55780	A4/19402	64	Joint ...	"	2	As req.
9/15/55791	Z5/30792	65	Setscrew, Special, $\frac{7}{8}$ " B.S.F. x $1\frac{1}{4}$ ", Drilled...	"	1	
9/15/55792	Z5/30791	66	Setscrew, Special, $\frac{7}{8}$ " B.S.F. x $1\frac{3}{4}$ ", Drilled...	"	1	Through Extension Casing
9/15/55771	Z9/30719	67	Wire, Locking, Iron, 16 S.W.G. ...	"	1	
9/15/55794	Z17/30769		Bolt, Special, $\frac{3}{8}$ " B.S.F. x 3", Drilled ...	"		
	86-33	68	Nut, Slotted, $\frac{3}{8}$ " B.S.F.	"	2	Rear Connection
9/15/40305	138-151	69	Washer, Copper, $\frac{3}{16}$ " x 15 x 1 m/m., Special	"	3	
	100-7	70	Split Pin, $\frac{3}{16}$ " x $\frac{3}{8}$ "	"	3	Delivery Pipe Flange to Scavenger Pump Cover Scavenger Pump
9/15/55775	A8/2225	71-74	OIL DELIVERY PIPE COMPLETE	"	9"	
9/15/55772	A4/19403	75	Joint ...	"	1	Scavenger Pump Front Connection Rear Connection
9/15/55278	A4/19408	76	Joint ...	"	1	
9/15/55770	Z15/30725	77	Bolt, Special, $\frac{3}{8}$ " B.S.F. x $2\frac{3}{8}$ ", Drilled	"	2	Rear Connection
9/15/55771	Z9/30719	78	Bolt, Special, $\frac{3}{8}$ " B.S.F. x 3", Drilled	"	2	
	86-33	79	Nut, Slotted, $\frac{3}{8}$ " B.S.F.	"	3	Delivery Pipe Flange to Scavenger Pump Cover Scavenger Pump
9/15/40305	138-151	80	Washer, Copper, $\frac{3}{16}$ " x 15 x 1 m/m., Special	"	3	
	100-7	81	Split Pin, $\frac{3}{16}$ " x $\frac{3}{8}$ "	"	3	Oil Suction Pipe
9/15/35583	Z3/43722	82	Setscrew, Special, $\frac{7}{8}$ " B.S.F. x $\frac{3}{4}$ ", Drilled ...	"	2	
	219-21	83	Wire, Locking, Iron, 16 S.W.G. ...	"	9"	Suction Pipe to Support Bracket
9/15/55805	A8/2224	84-85	OIL SUCTION PIPE COMPLETE	"	1	
9/15/55802	A3/19498	86	Joint ...	"	1	Oil Suction Pipe
9/15/55791	Z5/30792	87	Setscrew, Special, $\frac{7}{8}$ " B.S.F. x $1\frac{1}{2}$ ", Drilled...	"	2	
9/15/56313	138-131	88	Washer, Copper, 16-5 x 22 x 2 m/m., Special	"	1	Suction Pipe to Support Bracket
9/15/55755	Z1/44539	89	Plug, Special ...	"	1	
	219-21	90	Wire, Locking, Iron, 16 S.W.G. ...	"	9"	Suction Pipe to Support Bracket
9/15/55801	Z2/31318	91	Clip ...	"	1	
9/15/55800	Z7/30760	92	Bolt, Special, $\frac{3}{8}$ " B.S.F. x $\frac{3}{4}$ ", Drilled	"	1	Suction Pipe to Support Bracket
	86-33	93	Nut, Slotted, $\frac{3}{8}$ " B.S.F.	"	1	
	100-7	94	Split Pin, $\frac{3}{16}$ " x $\frac{3}{8}$ "	"	1	

B.R. Cat. No.	A.E.C. Basic Part No.	Plate Ref.	Designation	Used on	No. Req. per Engine	Remarks
		A6	ENGINE—Continued	All Models		
9/15/56315	Z1804		SUPPORT BRACKET COMPLETE	"	1	
9/15/55801	Z2/31318		Clip	"	1	Pressure to Scavenger Suction Pump
9/15/55800	Z7/30760		Bolt, Special, $\frac{5}{16}$ " B.S.F. $\times \frac{3}{8}$ ", Drilled	"	1	
	86-33		Nut, Slotted, $\frac{5}{16}$ " B.S.F.	"	1	
	100-7		Split Pin, $\frac{5}{16}$ " $\times \frac{3}{8}$ "	"	1	
9/15/55280	A1/3775	95-99	OIL PIPE COMPLETE	"	1	Extension to Filter—Filter to Cooler—Cooler to Extension
9/15/56316	132-12	100	Nut, Union, $\frac{3}{8}$ " O/D. Pipe, $\frac{7}{8}$ " Gas, Special	"	2	Oil Pipe
9/15/56317	130-7	101	Cone, Union, $\frac{3}{8}$ " O/D. Pipe, Special	"	2	
9/15/55278	A4/19408	76	Joint	"	1	Top Connection
	Z2/32047	102	Nut, Plain, $\frac{5}{16}$ " B.S.F.	"	3	Connection to
	Z4/30692	103	Washer, Grover, $\frac{7}{16}$ "	"	3	Extension Casing
9/15/56318	Z5/31341		Bracket	"	1	Oil Cooler Pipes
9/15/56319	Z5/31342		Clip	"	1	
9/15/56320	Z14/30730		Setscrew, $\frac{7}{16}$ " B.S.F. $\times 1$ "	"	1	Bracket
	Z4/30697		Washer, Grover, $\frac{7}{16}$ "	"	1	
9/15/56321	Z12/30711		Bolt, $\frac{1}{2}$ " B.S.F. $\times \frac{3}{4}$ "	"	1	Clip to Bracket
	Z2/32045		Nut, Plain, $\frac{1}{2}$ " B.S.F.	"	1	
	Z3/30616		Washer, Grover, $\frac{1}{2}$ "	"	1	Front Camshaft Bearing to Bevel Drive
9/15/35683	A10/2226		OIL PIPE COMPLETE	"	1	
9/15/55250	AA3367	A7	OIL FILTER COMPLETE	"	1	
9/15/55251	AA3369		OIL FILTER CASING WITH STUDS	"	1	Not supplied as Spares
	A89015	1	Casing, Oil Filter	"	1	
9/15/35434	Z7/30506		Stud, Special, $\frac{5}{16}$ " B.S.F. $\times 2\frac{1}{8}$ "	"	8	Cover to Filter Casing
9/15/55260	A81450	2	Cover, Oil Filter	"	1	
9/15/55267	A5/19472	3	Joint	"	8	
	Z2/32047	4	Nut, Plain, $\frac{5}{16}$ " B.S.F.	"	8	
	Z4/30688		Washer, Thackray, $\frac{5}{16}$ "	"	8	Oil Filter Body Release Valve
9/15/55266	A79907		Guide, Release Valve	"	1	
9/15/55272	A78203	5	Plunger	"	1	Oil Filter Body Release Valve
9/15/55273	Z2/45449		Spring	"	1	
9/15/35688	138-211		Washer, Copper, 32 \times 40 \times 2 m/m., Special	"	1	Oil Filter Element
	99-133		Circlip, Seeger, $\frac{3}{8}$ " Bore	"	1	
9/15/55265	AA3308	6	ELEMENT COMPLETE	"	1	Oil Filter Element
9/15/55270	A81505		Plate, End	"	1	
9/15/55275	Z1/45470	7	Spring Element	"	1	Oil Filter Connection
9/15/55276	A89101	8	Stiffener	"	1	
9/15/55295	Z4/30789	11	Setscrew, Special, $\frac{5}{16}$ " B.S.F. $\times 1\frac{1}{2}$ ", Drilled	"	2	Oil Filter Connection
9/15/55296	Z4/30774	12	Setscrew, Special, $\frac{5}{16}$ " B.S.F. $\times \frac{7}{8}$ ", Drilled	"	1	
	219-21	13	Wire, Locking, Iron, 16 S.W.G.	"	18"	Drilled Studs } Alternatives
	Z2/32061		Nut, Slotted $\frac{7}{16}$ " B.S.F.	"	3	
9/15/55298	Z5/30600		Washer, Steel Bright, $\frac{7}{16}$ "	"	3	
	100-10		Split Pin, $\frac{3}{32}$ " $\times \frac{7}{8}$ "	"	3	
	90-166		Locknut, $\frac{7}{16}$ " B.S.F. "Simmonds"	"	3	Undrilled Studs } Alternatives
			Nyloc, NP-F146	"	3	
9/15/55298	Z5/30600		Washer, Steel Bright, $\frac{7}{16}$ "	"	3	For Studs, see Page A.11

B.R. Cat. No.	A.E.C. Basic Part No.	Plate Ref.	Designation	Used on	No. Req. per Engine	Remarks
		A8	ENGINE—Continued	All Models		
9/15/61469	A1/1167		WATER PUMP COMPLETE ...	"	1	
9/15/61471	A1/1168		WATER PUMP BODY WITH STUDS ...	"	1	
9/15/61530	A1/23824	1	Body, Water Pump ...	"	1	
9/15/61531	124-1122		Stud, $\frac{5}{16}$ " B.S.F. x 1" ...	"	2	
9/15/61475	A1/1153	2	WATER PUMP COVER AND SLEEVE ...	"	1	
9/15/61484	A4/19434	3	Joint... ..	"	1	
9/15/35516	Z43797	4	Setscrew, Special, $\frac{5}{16}$ " B.S.F. x 21 m/m. ...	"	7	} Water Pump Cover
9/15/40310	138-129	5	Washer, Copper, $\frac{21}{64}$ " x 15 m/m. x $\frac{3}{32}$ ", Special ...	"	7	
9/15/61500	A23947	6	Spindle	"	1	} Water Pump Spindle
9/15/61503	A24024	7	Vane	"	1	
9/15/61485	Z1/43111	8	Key, Special... ..	"	1	} Water Pump Spindle
	91-65	9	Nut, Slotted, $\frac{7}{16}$ " B.S.F. ...	"	1	
	100-11		Split Pin, $\frac{3}{32}$ " x 1" ...	"	1	
9/15/61494	Z48856	10	Spring Ring	"	1	} Water Pump Vane
9/15/61478	A27418	11	Gland, Carbon	"	1	
9/15/61498	A31022	12	Seal, Rubber, Gland	"	1	} Water Pump Vane
9/15/61480	A55502	13	Housing	"	1	
9/15/61481	A55503	14	Ring, Retaining	"	1	} Water Pump Vane
9/15/61501	Z2/45476	15	Spring	"	1	
9/15/61493	A21773	16	Pulley	"	1	} Water Pump Vane
9/15/61499	5091-2	17	Oil Seal, 1 $\frac{7}{16}$" x 2 $\frac{1}{4}$" x $\frac{3}{8}$" Wide, Weston ...	"	1	
9/15/61489	Z6/44891	18	Distance Piece	"	1	Shaft
9/43/5266	5-4	19	Bearing, Ball, Hoffmann MS9, R. & M. MJ $\frac{7}{8}$, "OO" Fit	"	2	
	99-271	20	Circlip, Seeger, 2 $\frac{3}{16}$ " Bore... ..	"	1	
9/15/61497	5091-1	21	Oil Seal, "Gaco", No. MIS.11	"	1	
9/15/61483	A63402	22	Hub	"	1	} Pulley
9/15/61487	156-169	23	Key, $\frac{1}{4}$ " x $\frac{3}{16}$ " x $\frac{7}{8}$ ", Special	"	1	
	136-36	24	Tabwasher, $\frac{5}{8}$ "	"	1	
	85-38	25	Nut, Plain, $\frac{5}{8}$ " B.S.F.	"	1	
9/15/35586	Z11/30779	26	Setscrew, $\frac{5}{16}$ " B.S.F. x $\frac{3}{4}$ "	"	5	} Pulley Hub
	Z4/30692		Washer, Grover, $\frac{5}{16}$ "	"	5	
9/15/99039	81-312	27	Lubricator, Tecalemit No. 4657	"	1	} $\frac{3}{8}$ " B.S.F.
9/15/61508	Z16/30730	28	Setscrew, $\frac{1}{2}$ " B.S.F. x $1\frac{7}{8}$ "	"	1	
9/15/61509	Z16/30743	29	Setscrew, $\frac{1}{2}$ " B.S.F. x $2\frac{3}{8}$ "	"	2	} Water Pump to Casing
	Z4/30695	30	Washer, Grover, $\frac{1}{2}$ "	"	3	
9/15/61437	A13575	52	Belt, Goodyear	"	2	
9/15/61468	A3/25716	31	Pipe, Water	"	2	
9/15/61467	A4/19414	32	Joint	"	1	} Water Pump
9/15/61466	A1/24458	33	Hose, 1 $\frac{3}{4}$" I/D. x 2 $\frac{3}{8}$"	"	1	
	332-74	34	Clip, Jubilee, No. 2	"	2	
9/15/61501	40-41	35	Bolt, $\frac{5}{16}$ " B.S.F. x $2\frac{1}{8}$ ", Drilled	"	2	} Water Pipe
	Z4/30686		Washer, Thackray, $\frac{5}{16}$ "	"	2	

B.R. Cat. No.	A.E.C. Basic Part No.	Plate Ref.	Designation	Used on	No. Req. per Engine	Remarks
		A8	ENGINE—Continued	All Models		
9/15/61037	N1/0803		THERMOSTAT COMPLETE	1	
9/15/61040	N12784	105	Body, Thermostat	1	
9/15/61045	81-2336	106	Thermostat	1	
9/15/61041	Z1/44026	} 107	Screw, Locating, Special	1	} Thermostat
9/15/61050	138-152		Washer, Copper, 10×15×1 m/m., Special	1	
9/15/61042	125-121	108	Stud, $\frac{5}{16}$ " B.S.F. × $1\frac{1}{2}$ ", Special	2	} Stub to Thermostat
9/15/94826	125-123	109	Stud, $\frac{5}{16}$ " B.S.F. × $1\frac{1}{2}$ ", Special	3	
9/15/40217	A4/19410	110	Joint	1	Thermostat
9/15/61051	40-64	111	Bolt, $\frac{5}{16}$ " B.S.F. × 5", Drilled, Special	1	} Body to Head
9/15/61027	40-55	112	Bolt, $\frac{5}{16}$ " B.S.F. × $3\frac{7}{8}$ ", Drilled, Special	1	
9/15/61028	40-36	113	Bolt, $\frac{5}{16}$ " B.S.F. × $1\frac{1}{2}$ ", Drilled, Special	2	
9/15/40310	138-129	114	Washer, Copper, $\frac{21}{64}$ " × 15 m/m. × $\frac{3}{32}$ ", Special	4	
9/15/61020	A3/25788	115	Pipe, Water Outlet	1	} Thermostat
9/15/61008	N18505	116	Joint	1	
	85-33	} 117	Nut, Plain, $\frac{5}{16}$ " B.S.F.	3	} Thermostat
	135-3		Washer, Thackray, $\frac{5}{16}$ "	3	
9/15/61015	A3/25789	123	Pipe, Water By-Pass	1	
9/15/61030	N3/0425	118	WATER BY-PASS STUB COMPLETE	2	
9/15/61007	A4/19446	119	Joint	2	} Stubs to Thermostat
	85-33	} 120	Nut, Plain, $\frac{5}{16}$ " B.S.F.	4	
	135-33		Washer, Grover, $\frac{5}{16}$ "	4	Body and Water Pump
9/15/61005	A1/24462	121	Hose, $1\frac{1}{8}$" I/D. × 2"	2	} By-Pass Stubs
	332-68	122	Clip, Jubilee, No. 1	4	
9/15/61052	Z31344	124	Clip	1	} Picks up Oil Filler
	134-4	125	Washer, Plain, $\frac{3}{8}$ " } By-Pass Pipe	..	1	

B.R. Cat. No.	A.E.C. Basic Part No.	Plate Ref.	Designation	Used on	No. Req. per Engine	Remarks
		A8	ENGINE—Continued	All Models		
9/15/37500	AB3808		RIGHT ANGLE DRIVE CASING COMPLETE WITH BRACKET	Not A220AZ	1	
9/15/37602	AB3813		RIGHT ANGLE DRIVE CASING COMPLETE WITH BRACKET	A220AZ	1	
9/15/37530	AB3806		RIGHT ANGLE DRIVE CASING COMPLETE	All Models	1	
9/15/37542	AB3807		DRIVE CASING WITH STUDS	"	1	
	A93726	53	Casing	"	1	Not supplied as Spares
9/15/37546	124-1155	54	Stud, $\frac{3}{8}$ " B.S.F. \times $1\frac{1}{2}$ ", Special	"	4	Foot Stud
9/15/37546	124-1155	55	Stud, $\frac{3}{8}$ " B.S.F. \times $1\frac{1}{2}$ ", Special	"	6	End Cap
9/15/37548	124-1154	56	Stud, $\frac{3}{8}$ " B.S.F. \times $1\frac{3}{8}$ ", Special	"	6	Housing
9/15/37575	Z2/44500	57	Plug, Oil Filler	"	1	
9/15/37590	Z6/30684	58	Washer, Special, $3\frac{1}{4}$ " O/D. \times $2\frac{9}{32}$ " \times $\frac{5}{32}$ "	"	1	
9/15/37535	78-850	59	BREATHER, A.C. SPHINX 1574857	"	1	
9/15/37588	A93727	60	Tube, Breather	"	1	
	332-74	61	Clip, Jubilee, No. 2	"	1	
9/15/37574	Z2/44527	62	Plug, Drain	"	1	
9/15/37591	Z44907	63	Washer, Special, $1\frac{3}{16}$ " O/D. \times $\frac{3}{4}$ " \times $\frac{3}{32}$ "	"	1	
9/15/37536	A93712	64	Cap, End	"	1	Output Shaft, Rear
9/15/37562	Z44241	65	Joint	"	1	
9/15/30582	121-103	66	Setscrew, $\frac{1}{4}$ " B.S.F. \times $\frac{5}{8}$ "	"	4	End Cap
	134-2		Washer, Plain, $\frac{1}{4}$ "	"	4	
9/15/37580	A93711	67	Shaft, Output	"	1	
9/15/37595	A92608	68	Bevel Wheel	"	1	
9/15/37565	156-168	69	Key, $\frac{1}{4}$ " \times $\frac{3}{16}$ " \times $\frac{5}{8}$ "	"	1	
9/15/37533	17-1	70	Bearing, Roller, 1" \times $2\frac{1}{4}$" \times $\frac{5}{8}$", Special	"	1	
9/15/37570	Z3/32046	71	Locknut, Special, $\frac{7}{8}$ ", 16 T.P.I. \times $\frac{1}{2}$ " Wide	"	1	
9/43/5279	5-5	72	Bearing, Ball, Hoffmann MS.10, R. & M. MJ.I, "OO" Fit	"	1	Output Shaft
9/15/37560	A93709	73	Housing	"	1	
9/15/37581	Z3/46592	74	Shim, 0.003"	"	As req.	
9/15/37582	Z3/46592A		Shim, 0.005"	"		
9/15/37583	Z3/46592B		Shim, 0.010"	"		
9/15/37538	A93713	75	Cap, End	"	1	
9/15/37563	Z44242	76	Joint	"	1	
	85-34	77	Nut, Plain, $\frac{5}{16}$ " B.S.F.	"	6	End Cap
	135-34		Washer, Grover, $\frac{3}{16}$ "	"	6	
9/15/61499	5091-2	78	Oil Seal, 1 $\frac{7}{16}$" \times $2\frac{1}{2}$" \times $\frac{3}{8}$" Wide, Weston	"	1	
9/15/37585	Z8/44855	79	Spacer	"	1	
9/15/37552	A1/22879	80	Flange	"	1	
9/15/37568	156-174	81	Key, $\frac{3}{16}$ " \times $\frac{3}{16}$ " \times $\frac{7}{8}$ "	"	1	Output Shaft
	86-38	82	Nut, Slotted, $\frac{5}{8}$ " B.S.F.	"	1	
	100-14		Split Pin, $\frac{1}{8}$ " \times $1\frac{1}{2}$ "	"	1	

B.R. Cat. No.	A.E.C. Basic Part No.	Plate Ref.	Designation	Used on	No. Req. per Engine	Remarks
		A8	ENGINE—Continued	All Models		
			RIGHT ANGLE DRIVE CASING WITH BRACKET—Continued			
			RIGHT ANGLE DRIVE CASING—Continued			
9/15/37579	A93710	83	Shaft, Input	"	1	} Input Shaft
9/15/37592	A92607	84	Bevel Wheel	"	1	
9/15/37565	156-168	85	Key, $\frac{1}{4} \times \frac{3}{16} \times \frac{5}{8}$	"	1	
9/43/5279	5-5	86	Bearing, Ball, Hoffmann MS.10, R. & M. MJ.1, "OO" Fit	"	1	
9/15/37584	Z8/44853	87	Spacer	"	1	
9/43/5279	5-5	86	Bearing, Ball, Hoffmann MS.10, R. & M. MJ.1, "OO" Fit	"	1	
9/15/37561	A93708	88	Housing	"	1	
9/15/37581	Z3/46592	} 89	Shim, 0-003"	"	} As req.	
9/15/37582	Z3/46592A		Shim, 0-005"	"		
9/15/37583	Z3/46592B		Shim, 0-010"	"		
	85-34		Nut, Plain, $\frac{3}{8}$ " B.S.F.	"		
	135-34	90	Washer, Grover, $\frac{3}{8}$ "	"	6	
9/15/37540	A93714	91	Cap. End	"	6	
9/15/37564	Z44243	92	Joint	"	1	
9/15/37578	121-105	} 93	Setscrew, $\frac{1}{4}$ " B.S.F. $\times \frac{7}{8}$ "	"	6	
	135-32		Washer, Grover, $\frac{1}{2}$ "	"	6	
9/15/61499	5091-2	94	Oil Seal, $1\frac{7}{16} \times 2\frac{1}{4} \times \frac{3}{16}$ " Wide, Weston	"	1	
9/15/37577	Z8/44854	95	Ring, Oil Seal	"	1	
9/15/37586	Z8/44852	96	Spacer	"	1	
9/15/37576	A1/21721	} 97	Pulley	"	} 1	
9/15/37606	A1/21792		Pulley, High Speed	"		
9/15/61487	156-169	98	Key, $\frac{1}{4} \times \frac{3}{16} \times \frac{7}{8}$, Special	"	1	
	86-39	99	Nut, Slotted, $\frac{3}{4}$ " B.S.F.	"	1	
	100-18	100	Split Pin, $\frac{5}{32} \times 1\frac{3}{4}$ "	"	1	
9/15/37502	A93725		Spacer	Not AB3813	1	
9/15/37501	Z18/30737		Bolt, Special, $\frac{5}{16}$ " B.S.F. $\times 1$ ", Drilled	"	4	
	86-33		Nut, Slotted, $\frac{5}{16}$ " B.S.F.	"	4	
	134-3		Washer, Plain, $\frac{5}{16}$ "	"	4	
	100-4		Split Pin, $\frac{1}{16} \times 1$ "	"	4	
9/15/37515	AB3512	101	BRACKET COMPLETE	All Models	1	
	85-34	} 102	Nut, Plain, $\frac{3}{8}$ " B.S.F.	"	4	
	135-4		Washer, Thackray, $\frac{3}{8}$ "	"	4	
9/15/37508	125-184	103	Stud, $\frac{7}{16}$ " B.S.F. $\times 1\frac{7}{8}$ ", Special	"	5	
	85-35	} 104	Nut, Plain, $\frac{7}{16}$ " B.S.F.	"	5	
	134-5		Washer, Plain, $\frac{7}{16}$ "	"	5	

B.R. Cat. No.	A.E.C. Basic Part No.	Plate Ref.	Designation	Used on	No. Req. per Engine	Remarks
		A3	ENGINE—Continued	All Models		
9/15/34190	AB2906	101	AIR COMPRESSOR COMPLETE, CLAYTON DEWANDRE TYPE PCGAI89	Not A220AJ/AZ	1	
9/15/34192	AB4103		DRIVE HOUSING COMPLETE	"	1	Not supplied as Spares
	A33122		Housing	"	1	
9/15/34193	Z1/10159		Bush	"	2	
9/15/34191	A15475		Gear, Driving	"	1	Driving Gear
9/15/34198	Z43123		Key, Special	"	1	
9/15/34200	Z31992		Nut, Special, $\frac{5}{8}$ " B.S.F. \times 9 m/m. Wide	"	1	
9/15/34207	Z4/30693		Washer, Steel, Bright, $\frac{5}{8}$ "	"	1	
	100-106		Split Pin, $\frac{1}{8}$ " \times $1\frac{3}{8}$ "	"	1	Housing
9/15/34204	A3/75111		Plate, Cover... ..	"	1	Housing Cover Plate
9/15/34195	A4/19440		Joint	"	1	
9/15/30582	Z1-103		Setscrew, $\frac{1}{4}$ " B.S.F. \times $\frac{3}{8}$ "	"	3	
	135-92		Washer, Shakeproof, $\frac{1}{4}$ " External	"	3	
9/15/34209	A46605		Washer, Thrust	"	1	
9/15/34215	A4/19429		Joint	"		As req.
9/15/34244	Z2/46595		Shim, 0.002"	"		
9/15/34245	Z2/46596		Shim, 0.003"	"		
9/15/34246	Z2/46597		Shim, 0.006"	"		
9/15/34213	Z1/44079		Ring Dowel	"	2	
9/15/34270	43-97	102	Bolt, $\frac{1}{2}$ " B.S.F. \times $1\frac{3}{8}$ ", Drilled, Special	"	1	Housing to Engine Casing
9/15/34271	43-124	103	Bolt, $\frac{1}{2}$ " B.S.F. \times $5\frac{1}{2}$ ", Drilled, Special	"	1	
9/15/34272	43-110		Bolt, $\frac{1}{2}$ " B.S.F. \times $3\frac{3}{8}$ ", Drilled, Special	"	1	
	135-36		Washer, Grover, $\frac{1}{2}$ "	"	3	
9/15/34251	Z8/30546		Stud, Special, $\frac{3}{8}$ " & $\frac{1}{2}$ " B.S.F. Ends \times 2"	"	1	Air Compressor
	85-34		Nut, Plain, $\frac{3}{8}$ " B.S.F.	"	1	
	134-4		Washer, Plain, $\frac{3}{8}$ "	"	1	
	135-94		Washer, Shakeproof, $\frac{3}{8}$ " External	"	1	
9/15/34210	G1/25157		Adaptor	"	1	
9/15/35382	138-144		Washer, Copper, 27 \times 34 \times 2.5 m/m., Special	"	1	
9/15/34253	A3/60670		Tube, Drain	"	1	
9/15/34235	Z44565		Plug, Drain	"	1	
9/15/34259	138-201		Washer, Copper, $1\frac{1}{16}$ " \times $1\frac{3}{8}$ " \times $1\frac{1}{8}$ ", Special	"	1	
9/15/34248	Z3/45426		Spring, Drain Tube... ..	"	1	
9/15/34260	Z6/30626		Washer, Special, $1\frac{1}{4}$ " O.D. \times $\frac{5}{16}$ " \times 18 S.W.G.	"	1	
9/15/34240	5092-6		"O" Ring, Gaco No. R129	"	1	
9/15/34223	A10/2279	105	OIL FEED PIPE COMPLETE	"	1	
9/15/34273	Z7/31307		Clip	"	1	Oil Feed Pipe
9/15/35571	G25250		Pin, Banjo	"	1	Idler Spindle
9/15/34220	G25269	106	Pin, Banjo	"	1	
9/15/34230	A74603		Washer, Copper, 14.5 \times 21 \times 2 m/m.	"	2	Banjo Pin
9/15/35698	138-139		Washer, Copper, 10 \times 21 \times 2 m/m., Special	"	2	
	219-21		Wire, Locking, Iron, 16 S.W.G.	"	As req.	
9/15/34275	5002-96		Olive, Clayton SF491-10, Special	"	1	Air Suction Pipe
9/15/34276	5002-97		Nut, Union, Clayton SF492-9, Special	"	1	
9/15/34279	A3/75155		Cover, Blanking	A220AJ/AZ	1	Blanking Plate
9/15/34215	A4/19429		Joint	"	1	
9/15/34277	121-217		Setscrew, $\frac{1}{2}$ " B.S.F. \times $1\frac{1}{8}$ "	"	4	
	135-36		Washer, Grover, $\frac{1}{2}$ "	"	4	Oil Return Hole—
9/15/34278	Z2/44508		Cup Plug	"	1	Crankcase
9/15/35582	103-93		Plug, Core	"	1	Idler Spindle

B.R. Cat. No.	A.E.C. Basic Part No.	Plate Ref.	Designation	Used on	No. Req. per Engine	Remarks
		A9	ENGINE—Continued	All Models		
9/15/47300	560-2406	1	FUEL INJECTION PUMP COMPLETE, C.A.V. TYPE NL6F90/161	"	1	
9/15/47302	560-3518	2	GOVERNOR, C.A.V. TYPE GLWB9 (199/900)	"	1	
9/15/47425	560-2162	3	FUEL LIFT PUMP COMPLETE, C.A.V. TYPE DFP3/2S	"	1	
9/15/42092	560-2548	4	Pointer, Timing, C.A.V., 7097/392	"	1	
9/15/46630	A8/2245	5	OVERFLOW PIPE COMPLETE	"	1	
9/15/46544	Z4/31395	6	Clip	"	1	
9/15/46575	A8/2246	7	AIR VENT PIPE COMPLETE	"	1	
9/15/46544	Z4/31395	6	Clip	"	1	
9/15/42077	A1/4727	8	FUEL INJECTION PUMP FLYWHEEL COUPLING	"	1	
9/15/35391	A23032	9	Coupling, Centre	"	1	Rubber
9/15/42081	Z1/44081	10	Dowel, Special... ..	"	1	
9/15/42088	Z1/44737	11	Plate, Locking	"	1	
9/15/42095	Z14/30781	12	Screw, 2 B.A. $\times \frac{5}{8}$ "	"	2	Drive End
	153-19	12	Washer, Grover, No. 2 B.A., Light Pattern	"	2	
9/15/42080	A1/22890	13	Coupling, Fuel Injection Pump	"	1	
9/15/40276	Z12/30756	14	Screw, $\frac{7}{8}$ " B.S.F. $\times 1$ "	"	2	Fuel Injection Pump
	134-3	14	Washer, Plain, $\frac{5}{16}$ "	"	2	Coupling
	135-33	14	Washer, Grover, $\frac{5}{16}$ "	"	2	
9/15/42074	A19649	15	Bracket	"	1	
	Z2/32044	16	Nut, Plain, $\frac{1}{2}$ " B.S.F.	"	4	
	Z5/30609	16	Washer, Thackray, $\frac{1}{2}$ "	"	4	
	Z2/32047	17	Nut, Plain, $\frac{3}{8}$ " B.S.F.	"	1	
	Z4/30688	17	Washer, Thackray, $\frac{5}{16}$ "	"	1	
9/15/34213	Z1/44079	18	Ring Dowel	"	2	
9/15/42071	41-108	19	Bolt, $\frac{3}{8}$ " B.S.F. $\times 9\frac{3}{4}$ "	"	2	
9/15/42070	Z3/43766	20	Bolt, $\frac{3}{8}$ " B.S.F. $\times 3\frac{7}{8}$ "	"	2	Bracket
	Z32034	21	Nut, Plain, $\frac{3}{8}$ " B.S.F.	"	4	
	Z2/30652	21	Washer, Steel, Bright, $\frac{3}{8}$ "	"	4	
	Z4/30686	21	Washer, Thackray, $\frac{3}{8}$ "	"	4	
9/15/42087	G1/14722	22	Pin, Pull Off Spring	"	1	Fuel Injection Pump
	Z4/30686	22	Washer, Thackray, $\frac{3}{8}$ "	"	1	Bracket
9/15/84100	499-4203	23	SOLENOID COMPLETE, C.A.V. TYPE 263-37M	"	1	
9/15/45530	Z51777	24	Bracket	"	1	
9/15/84025	121-113	25	Setscrew, $\frac{5}{16}$ " B.S.F. $\times \frac{5}{8}$ "	"	4	Solenoid to Bracket
	85-33	25	Nut, Plain, $\frac{5}{16}$ " B.S.F.	"	4	
	135-33	25	Washer, Grover, $\frac{5}{16}$ "	"	4	
9/15/45555	121-102	26	Setscrew, $\frac{1}{4}$ " B.S.F. $\times \frac{1}{2}$ "	"	2	Bracket to Fuel
	135-32	26	Washer, Grover, $\frac{1}{4}$ "	"	2	Injection Pump
9/15/45557	117-241	27	Screw, Csk., $\frac{1}{4}$ " B.S.F. $\times \frac{1}{2}$ ", Special	"	2	
	135-122	27	Washer, Shakeproof, Csk., $\frac{1}{4}$ "	"	2	
9/15/45540	R17125	28	Fork End	"	1	
9/15/45546	141-16	29	Pin, Special	"	1	Fork End
	100-5	29	Split Pin, $\frac{5}{64}$ " $\times \frac{5}{8}$ "	"	1	
	90-31	30	Locknut, $\frac{1}{2}$ " B.S.F.	"	1	
9/15/45504	R1466	31	FUEL PUMP LEVER COMPLETE	"	1	
9/15/45500	39-4	32	Bolt, $\frac{1}{4}$ " B.S.F. $\times 1\frac{1}{8}$ ", Drilled, Special	"	1	
	85-32	32	Nut, Plain, $\frac{1}{4}$ " B.S.F.	"	1	
	135-32	32	Washer, Grover, $\frac{1}{4}$ "	"	1	
9/15/45516	Z45298	33	Spring, Pull Off	"	1	
9/15/45512	R4/1316	34	CONTROL ROD COMPLETE	"	1	
9/15/45580	R3/11362	34	Rod	"	1	
9/15/45581	R1670	35	BALL JOINT COMPLETE	"	2	
	Z2/32006	36	Locknut, $\frac{5}{16}$ " B.S.F.	"	2	
	Z2/32047	37	Nut, Plain, $\frac{5}{16}$ " B.S.F.	"	2	Control Rod
	Z4/30692	37	Washer, Grover, $\frac{5}{16}$ "	"	2	

B.R. Cat. No.	A.E.C. Basic Part No.	Plate Ref.	Designation	Used on	No. Req. per Engine	Remarks	
		A9	ENGINE—Continued	All Models			
9/15/46590	A11/2270	38	FUEL INJECTION PIPE COMPLETE ...	"	1	No. 1 Cylinder	
9/15/46591	A11/2271	39	FUEL INJECTION PIPE COMPLETE ...	"	1	No. 2 Cylinder	
9/15/46592	A11/2272	40	FUEL INJECTION PIPE COMPLETE ...	"	1	No. 3 Cylinder	
9/15/46593	A11/2273	41	FUEL INJECTION PIPE COMPLETE ...	"	1	No. 4 Cylinder	
9/15/46594	A11/2256	42	FUEL INJECTION PIPE COMPLETE ...	"	1	No. 5 Cylinder	
9/15/46595	A11/2257	43	FUEL INJECTION PIPE COMPLETE ...	"	1	No. 6 Cylinder	
9/15/46541	Z6/31394	44	Bracket	"	5	2 off on No. 1, 2 and 3 Cylinders—3 off on No. 4, 5 and 6 Cylinders	
9/15/46802	Z20/30713	45	Bolt, Special, 2 B.A. x $\frac{5}{8}$ "	"	6	} Fuel Injection Pipe Clips	
9/15/46803	Z10661	46	Damper	"	18		
9/15/46804	Z6/31395	47	Insulating Plate, Damper	"	3		
9/15/46553	Z5/31322	48	Clip	"	6		
9/15/46805	Z5/31323	49	Clamp Plate	"	1		
9/15/35681	Z13/30782	45	Bolt, Special, 2 B.A. x $\frac{1}{2}$ "	"	6		
	Z2/32056	} 50	Nut, Plain, 2 B.A.	"	12		
	Z4/30698		Washer, Grover, 2 B.A., Light Pattern	"	12		
9/15/41805	562-150	51	FUEL INJECTOR COMPLETE C.A.V. No. NLAI02S8BDLLI50S6064	"	6		} Injector to Cylinder Head
	Z32034	52	Nut, Plain, $\frac{3}{8}$ " B.S.F.	"	12		
9/15/41838	562-50		Plug, Dust, Outer, Special	"	6	} Injector Storage Only	
9/15/41839	562-49		Plug, Dust, Inner, Special	"	6		
9/15/41800	562-51		Dust Cap, Nozzle, Special	"	6		
9/15/46580	A35608	53	Pipe, Injector Overflow	"	6	} Overflow Pipes	
9/15/46582	81-260	} 54	Olive, Brass, Tecalemit Drg. 100834	"	12		
9/15/46619	81-264		Nut, Union, Tecalemit Drg. 100832	"	12		
9/15/46625	A6/2280	55	OVERFLOW GALLERY PIPE COMPLETE	"	1		
9/15/46617	Z4/31321	56	Clip	"	6	} Fuel Gallery Pipe	
	13-11	} 57	Ball, Steel, $\frac{9}{16}$ " Dia.	"	1		
9/15/46618	132-3		Nut, $\frac{3}{8}$ " Gas	"	1		
	13-5	} 58	Ball, Steel, $\frac{9}{32}$ " Dia.	"	1		
9/15/46619	81-264		Nut, Union, Tecalemit CL.17C	"	1		

railcar.co.uk

B.R. Cat. No.	A.E.C. Basic Part No.	Plate Ref.	Designation	Used on	No. Req. per Engine	Remarks
		A9	ENGINE—Continued	All Models		
9/15/46645	A10/2280	59	FUEL PIPE, ADAPTOR TO ADAPTOR ...	"	1	
9/15/46806	S13316	60	Adaptor ...	"	1	
9/15/46800	A10/2281	61	FUEL PIPE, ADAPTOR TO FUEL LIFT PUMP ...	"	1	
9/15/46640	A10/2282	62	FUEL PIPE, FUEL LIFT PUMP TO ADAPTOR ...	"	1	
9/15/46806	S13316	60	Adaptor ...	"	1	
9/15/46801	A10/2283	63	FUEL PIPE, ADAPTOR TO FUEL FILTER ...	"	1	
9/15/46635	A10/2284	64	FUEL PIPE, FUEL FILTER TO ADAPTOR ...	"	1	
9/15/46806	S13316	60	Adaptor ...	"	1	
9/15/46807	A10/2285	65	FUEL PIPE, ADAPTOR TO FUEL INJECTION PUMP ...	"	1	
9/15/46650	A9/2287	66	FUEL PIPE, GALLERY OVERFLOW TO TEE PIECE ...	"	1	
9/15/46655	A9/2288	67	FUEL PIPE, VENT VALVE TO TEE PIECE ...	"	1	
9/15/46808	216-7		Pipe, Steel, $\frac{1}{8}$ " Dia. x 18 S.W.G. ...	"	1	} As req. Fuel Pipes
9/15/46618	132-3		Nut, Union, $\frac{1}{8}$ " Gas, Special ...	"	1	
9/15/46809	130-17		Cone, Union, $\frac{1}{8}$ " O/D. Pipe, Special ...	"	1	
9/15/46810	216-423		Pipe, Steel, $\frac{1}{8}$ " Dia. x 16 S.W.G. ...	"	2	} Fuel Vent Pipe
9/15/46811	132-49		Nut, Union, $\frac{1}{8}$ " Gas, Special ...	"	2	
9/15/46812	130-42		Cone, Union, $\frac{1}{8}$ " O/D. Pipe, Special ...	"	2	
9/15/46080	78-739	68	FUEL FILTER COMPLETE C.A.V. TYPE 2F3-16 ...	"	1	} Paper Type Element
9/75/2070	78-784		Element Paper, C.A.V. No. 7111-44 ...	"	2	
9/15/46556	42-102	69	Bolt, $\frac{7}{16}$ " B.S.F. x $2\frac{3}{8}$ " ...	"	2	
	85-35	} 70	Nut, Plain, $\frac{7}{16}$ " B.S.F. ...	"	2	
	135-35		Washer, Grover, $\frac{7}{16}$ " ...	"	2	
	560-2897	72	AIR BELL COMPLETE C.A.V. No. 7092/239 ...	"	1	
9/15/46535	Q2/21492	73	Bracket, Connection ...	"	1	Fuel Pipe (Feed and Return)
	134-4		Washer, Steel, Bright, $\frac{3}{8}$ " ...	"	2	
9/15/46525	S1/13321	74	Adaptor ...	"	1	
	93-29	75	Locknut, $\frac{3}{8}$ " Gas ...	"	2	
9/15/46565	S13547	76	Tee Piece ...	"	1	
	93-29	77	Locknut, $\frac{3}{8}$ " Gas ...	"	2	
9/15/46526	Z5/31390	78	Block ...	"	2	
9/15/46527	Z12/30769	} 79	Bolt, 2 B.A. x $1\frac{1}{4}$ " ...	"	2	} Fuel Pipe Block
	Z2/32056		Nut, Plain, 2 B.A. ...	"	2	
	Z4/30698		Washer, Special, Grover, 2 B.A., Light Pattern ...	"	2	
9/15/46547	S1/13163	80	Clip, Gallery to Tee Piece Fuel Pipe ...	"	1	Pipe to Water Jacket
9/15/46547	S1/13163	81	Clip, Adaptor to Fuel Lift Pump Fuel Pipe ...	"	2	Crankcase Extension
	134-4		Washer, Plain, $\frac{3}{8}$ " ...	"	2	
9/15/46544	Z4/31395		Clip, Fuel Vent Pipe ...	"	1	Crankcase Bottom Half
	134-4		Washer, Plain, $\frac{3}{8}$ " ...	"	1	
9/15/46548	S1/13151	82	Clip, Fuel Vent Pipe ...	"	1	To Delivery Pipe
9/15/35681	Z13/30782		Bolt, 2 B.A. x $\frac{1}{2}$ " ...	"	1	} Fuel Pipe Clip
	Z2/32056	Nut, Plain, 2 B.A. ...	"	1		
	Z4/30698	Washer, Special, Grover, 2 B.A., Light Pattern ...	"	1		
9/15/46546	S1/13169	83	Clip ...	"	2	} Crankcase Bottom Half
	134-4	Washer, Plain, $\frac{3}{8}$ " ...	"	2		

NOTE:—For Fuel Filter Mounting Plate see Page All

B.R. Cat. No.	A.E.C. Basic Part No.	Plate Ref.	Designation	Used on	No. Req. per Engine	Remarks
9/15/75510	V4410	A5 117 118 119 120 121 122 123 124 125	ENGINE—Continued	All Models		
			STARTER MOTOR COMPLETE, C.A.V. TYPE U624A-3	Not A220AL/BB	1	
9/15/75700	V4430		STARTER MOTOR COMPLETE, SIMMS TYPE 624SGRK43	A220AL/BB	1	
9/15/75481	Z43485		Dowel	All Models	1	
9/15/75488	V1/0155		STARTER MOTOR STRAP COMPLETE	"	1	Top
9/15/75489	V1/0124		STARTER MOTOR STRAP COMPLETE	"	1	Bottom
9/15/75487	V10170		Strap	"	1	Part of V1/0155
9/15/75486	V10139		Strap	"	1	Part of V1/0124
9/15/70015	Z47007		Pin	"	2	Length 2"
9/15/75485	Z1/47012		Pin	"	2	Length 3 $\frac{1}{8}$ "
9/15/75475	Z14/30710		Bolt, Special, $\frac{3}{8}$ " B.S.F. x 3"	"	1	} Starter Motor Strap
9/15/62930	Z32047		Nut, Special, $\frac{3}{8}$ " B.S.F.	"	1	
9/15/62945	Z1/30649		Washer, Special, $\frac{3}{8}$ " Sq., $\frac{1}{2}$ " Dia.	"	2	
9/15/75477	AB3602		STARTER PINION GUARD AND BRACKET COMPLETE	"	1	
	499-2602		Tape, P.V.C.	"	As req.	
9/15/75484	499-2325	Cover, Terminal	"	2	Use with V4410	

NOTE:—For Starter Motor Cap see page A.11

railcar.co.uk

B.R. Cat. No.	A.E.C. Basic Part No.	Plate Ref.	Designation	Used on	No. Req. per Engine	Remarks
			ENGINE—Continued	All Models		
9/15/76300	Z2412		ELECTRICAL INSTALLATIONS COMPLETE	A220AC/AK/AL/BB	1	
9/15/76301	Z2414		ELECTRICAL INSTALLATIONS COMPLETE	A220AJ	1	
9/15/76302	Z2420		ELECTRICAL INSTALLATIONS COMPLETE	A220AZ	1	
9/15/56740	Z2411		OIL PRESSURE SWITCH WITH SUPPORT BRACKET	A220AC/AK/AL/BB	1	
9/15/56741	Z2413		OIL PRESSURE SWITCH WITH SUPPORT BRACKET	A220AJ	1	
9/15/56742	Z2419		OIL PRESSURE SWITCH WITH SUPPORT BRACKET	A220AZ	1	
9/15/56980	81-2385		OIL PRESSURE SWITCH, SMITHS No. X80808/31/10	A220AC/AK/AL/BB	2	1 off on A220AJ/AZ
9/15/56984	Z44795		Lockwasher, Special, Copper, $\frac{3}{32}$ " Dia.	"	3	2 off on A220AJ/AZ
9/15/56743	A83057		Bracket	Not A220AZ	1	
9/15/56744	U188290		Bracket	A220AZ	1	
9/15/56745	A93728		Tee Piece	A220AC/AK/AL/BB	1	
9/15/56746	I21-111		Setscrew, $\frac{5}{16}$ " B.S.F. $\times \frac{3}{8}$ "	"	1	
9/15/40310	I38-129		Washer, Copper, $\frac{3}{16}$ " $\times 15$ m/m. $\times \frac{3}{32}$ " Special	"	1	Oil Pressure Switch
9/15/56747	S2/13393		Elbow	A220AJ/AZ	1	
9/15/56748	I38-156		Washer, Copper, $\frac{1}{32}$ " $\times \frac{3}{4}$ " $\times \frac{1}{16}$ "	"	1	
9/15/56749	S2/13375		Adaptor	All Models	1	
9/15/56750	V3/0333		ELECTRIC WIRING COMPLETE	A220AC/AK/AL/BB	1	
9/15/56751	V3/0347		ELECTRIC WIRING COMPLETE	A220AJ	1	
9/15/56752	V3/0396		ELECTRIC WIRING COMPLETE	A220AK	1	
	408-11		Elbow	Not A220AZ	1	2 off on A220AZ
	V38701		Conduit	"	1	19 $\frac{7}{8}$ " Length (Bent)
	U188291		Conduit	A220AZ	1	22 $\frac{1}{4}$ " Length
	408-2		Elbow	All Models	1	
	410-31		Tee Piece	"	1	
	V38702		Conduit, $\frac{3}{8}$ " Dia.	"	1	8 $\frac{7}{8}$ " Length (Bent)
	V38703		Conduit, $\frac{3}{8}$ " Dia.	"	1	20 $\frac{3}{8}$ " Length (Bent)
	409-24		Back Nut, Special	"	2	3 off on A220AZ
	A83059		Bracket, Support	"	1	
	407-42		Bush, External } Conduit	"	1	
	V38704		Nipple	"	2	3 off on A220AZ
	V38706		Conduit	"	1	
	138-56		Washer, C. & A., 50 $\times 55$ m/m. $\times \frac{1}{16}$ "	"	2	
9/15/56753	499-3830		CONNECTION CABLE AND PLUG	"	1	
	422-74		Plug, Niphan, 10 Pole, Simmonds and Stokes, Drg. No. 21199	"	1	
	499-3829		CABLE COMPLETE WITH FERRULES	"	1	
	402-302		Cable, Electric, One $\times 110/0-0076$ " Conductor	"	4' 0"	
	Z48616		Ferrule	"	1	1 $\frac{1}{8}$ " Length
	Z48617		Ferrule, Threaded End	"	1	3 $\frac{1}{4}$ " Length
	499-3828		Grommet	"	2	
	119-31		Screw, Grub, No. 2 B.A. $\times \frac{1}{4}$ "	"	1	
	426-219		Tubing, Insulating, 4 m/m. I/D.	"	8"	
	499-819		Tape, Identification, No. 1	"	2"	
	499-820		Tape, Identification, No. 2	"	2"	
	499-2396		Tape, Identification, No. 34	"	2"	
	499-2397		Tape, Identification, No. 35	"	2"	
	499-2398		Tape, Identification, No. 36	"	2"	
	499-2399		Tape, Identification, No. 37	"	2"	
	499-3401		Tape, Identification, No. 52	"	2"	
	499-3409		Tape, Identification, No. 60	"	2"	
	499-837		Tape, Identification, No. 61	"	2"	
	499-3412		Tape, Identification, No. 64	"	2"	
	499-3413		Tape, Identification, No. 65	"	2"	
	499-3827		Tape, Identification, No. 52W	"	2"	

B.R. Cat. No.	A.E.C. Basic Part No.	Plate Ref.	Designation	Used on	No. Req. per Engine	Remarks
			ENGINE—Continued	All Models		
			ELECTRICAL INSTALLATIONS—Continued	"		
			ELECTRICAL WIRING—Continued...	"		
9/15/56754	499-3890		HARNES COMPLETE WITH NIPHAN SOCKET	A220AC/AK/AL/BB	1	
9/15/56755	499-4285		HARNES COMPLETE WITH NIPHAN SOCKET	A220AJ/AZ	1	
	402-220		Cable, Electric, One x 35/0-012 Conductor, 5' 9" Long	A220AC/AK/AL/BB	2	Shut Down Solenoid
	402-220		Cable, Electric, One x 35/0-012 Conductor, 4' 0" Long	"	2	Tachometer
	402-220		Cable, Electric, One x 35/0-012" Conductor, 1' 6" Long	"	4	Oil Pressure Switch
	402-220		Cable, Electric, One x 35/0-012 Conductor, 6' 3" Long	A220AJ/AZ	2	Shut Down Solenoid
	402-220		Cable, Electric, One x 35/0-012" Conductor, 4' 6" Long	"	2	Tachometer
	402-220		Cable, Electric, One x 35/0-012 Conductor, 2' 0" Long	"	2	Oil Pressure Switch
	499-3453		Tubing, Flexible, 14 m/m. I/D.	A220AC/AK/AL/BB	2	I Off on A220AJ/AZ
	426-219		Tubing, Insulating, 4 m/m. I/D.	All Models	8"	
	422-73		Socket, Niphan, 10 Pole	"	1	
	499-819		Tape, Identification, No. 1	A220AC/AK/AL/BB	2"	
	499-820		Tape, Identification, No. 2	"	2"	
	499-2396		Tape, Identification, No. 34	"	2"	
	499-2397		Tape, Identification, No. 35	All Models	2"	
	499-2398		Tape, Identification, No. 36	"	2"	
	499-2399		Tape, Identification, No. 37	"	2"	
	499-3401		Tape, Identification, No. 52	"	2"	
	499-3409		Tape, Identification, No. 60	"	2"	
	499-837		Tape, Identification, No. 61	"	2"	
	499-3412		Tape, Identification, No. 64	"	2"	
	499-3413		Tape, Identification, No. 65	A220AC/AK/AL/BB	2"	
	499-3827		Tape, Identification, No. 52W	All Models	2"	
	347-215		Terminal Tag	"	2	Oil Pressure Switch
	499-1144		Tubing, Flexible, 8 m/m. I/D.	"	1'	Shut Down Solenoid
	344-377		Sealing Compound	"	As req.	
9/15/56756	28-31		Bolt, 2 B.A. x 5/8", Drilled, Special	"	3	
	149-14		Nut, Plain, 2 B.A.	"	3	Niphan Socket
	153-19		Washer, Grover, 2 B.A., Light Pattern	"	3	
9/15/56757	A83058		Bracket	"	1	Niphan Socket
9/15/56758	121-104		Setscrew, 1/4" B.S.F. x 3/4"	"	2	
	85-32		Nut, Plain, 1/4" B.S.F.	"	2	Support Bracket
	135-32		Washer, Grover, 1/4"	"	2	
9/15/56759	A2/50703		Pipe	"	1	
9/15/46582	81-260		Olive, Special	"	2	
9/15/46619	81-264		Nut, Union, Special	"	2	
9/15/56760	411-660		Clip	"	1	
9/15/56761	A83060		Bracket	"	1	Oil Pressure Switch
9/15/56762	411-661		Clip	"	1	
9/15/56763	39-2		Bolt, 1/4" B.S.F. x 7/8", Drilled, Special	"	1	
	85-32		Nut, Plain, 1/4" B.S.F.	"	1	
	135-32		Washer, Grover, 1/4"	"	1	
9/15/30582	121-103		Setscrew, 1/4" B.S.F. x 5/8"	"	2	Support Bracket
	85-32		Nut, Plain, 1/4" B.S.F.	"	2	—Conduit
	135-32		Washer, Grover, 1/4"	"	2	
	Z10627		Grommet	"	1	Cables

OVERSIZE (OUTSIDE DIAMETER)			
B.R. Cat. No.	A.E.C. Basic Part No.	Designation	Remarks
		1st STANDARD	
9/15/59331	A3/14205	Bearing, Main, Centre	Top Half
9/15/59332	A3/14211	Bearing, Main, Centre	Bottom Half
9/15/59333	A4/13777	Bearing, Main, Intermediate	Top Half
9/15/59334	A4/13783	Bearing, Main, Intermediate	Bottom Half
9/15/59335	A4/13765	Bearing, Main, Front	Top Half
9/18/59336	A4/13771	Bearing, Main, Front	Bottom Half
9/15/59337	A2/14725	Bearing, Main, Rear	Top Half
9/15/59338	A2/14731	Bearing, Main, Rear	Bottom Half
		2nd STANDARD	
9/15/59355	A3/14206	Bearing, Main, Centre	Top Half
9/15/59356	A3/14212	Bearing, Main, Centre	Bottom Half
9/15/59357	A4/13778	Bearing, Main, Intermediate	Top Half
9/15/59358	A4/13784	Bearing, Main, Intermediate	Bottom Half
9/15/59359	A4/13766	Bearing, Main, Front	Top Half
9/15/59360	A4/13772	Bearing, Main, Front	Bottom Half
9/15/59361	A2/14726	Bearing, Main, Rear	Top Half
9/15/59362	A2/14732	Bearing, Main, Rear	Bottom Half
		3rd STANDARD	
9/15/59363	A3/14207	Bearing, Main, Centre	Top Half
9/15/59364	A3/14213	Bearing, Main, Centre	Bottom Half
9/15/59365	A4/13779	Bearing, Main, Intermediate	Top Half
9/15/59366	A4/13785	Bearing, Main, Intermediate	Bottom Half
9/15/59367	A4/13767	Bearing, Main, Front	Top Half
9/15/59368	A4/13773	Bearing, Main, Front	Bottom Half
9/15/59369	A2/14727	Bearing, Main, Rear	Top Half
9/15/59370	A2/14733	Bearing, Main, Rear	Bottom Half
		4th STANDARD	
9/15/59371	A3/14208	Bearing, Main, Centre	Top Half
9/15/59372	A3/14214	Bearing, Main, Centre	Bottom Half
9/15/59373	A4/13780	Bearing, Main, Intermediate	Top Half
9/15/59374	A4/13786	Bearing, Main, Intermediate	Bottom Half
9/15/59375	A4/13768	Bearing, Main, Front	Top Half
9/15/59376	A4/13774	Bearing, Main, Front	Bottom Half
9/15/59377	A2/14728	Bearing, Main, Rear	Top Half
9/15/59378	A2/14734	Bearing, Main, Rear	Bottom Half
		5th STANDARD	
9/15/59379	A3/14209	Bearing, Main, Centre	Top Half
9/15/59380	A3/14215	Bearing, Main, Centre	Bottom Half
9/15/59381	A4/13781	Bearing, Main, Intermediate	Top Half
9/15/59382	A4/13787	Bearing, Main, Intermediate	Bottom Half
9/15/59383	A4/13769	Bearing, Main, Front	Top Half
9/15/59384	A4/13775	Bearing, Main, Front	Bottom Half
9/15/59385	A2/14729	Bearing, Main, Rear	Top Half
9/15/59386	A2/14735	Bearing, Main, Rear	Bottom Half
		6th STANDARD	
9/15/59387	A3/14210	Bearing, Main, Centre	Top Half
9/15/59388	A3/14216	Bearing, Main, Centre	Bottom Half
9/15/59389	A4/13782	Bearing, Main, Intermediate	Top Half
9/15/59390	A4/13788	Bearing, Main, Intermediate	Bottom Half
9/15/59391	A4/13770	Bearing, Main, Front	Top Half
9/15/59392	A4/13776	Bearing, Main, Front	Bottom Half
9/15/59393	A2/14730	Bearing, Main, Rear	Top Half
9/15/59394	A2/14736	Bearing, Main, Rear	Bottom Half

B.R. Cat. No.	A.E.C. Basic Part No.	Plate Ref.	Designation	Used on	No. Req. per Engine	Remarks
			ENGINE—Continued			
			OVERSIZE PISTONS	All Models		
9/15/38063	A5/5527		PISTON COMPLETE, WELLWORTHY ...	"	6	} 0.5 m/m. Oversize
9/15/59291	A6/11539		Piston, Bare	"	6	
9/15/59298	A4/11659		Ring, Top Groove	"	6	
9/15/59295	A4/11647		Ring, Compression	"	12	
9/15/59301	A4/11645		Ring, Scraper	"	12	
9/15/38064	A5/5528		PISTON COMPLETE, WELLWORTHY ...	"	6	
9/15/59292	A6/11540		Piston, Bare	"	6	
9/15/59299	A4/11660		Ring, Top Groove	"	6	
9/15/59302	A4/11648		Ring, Compression	"	12	
9/15/59296	A4/11646		Ring, Scraper	"	12	
			UNDERSIZE CONNECTING ROD BEAR- BEARINGS	"		
9/15/59245	A1/12107		Bearing, 2nd Standard	"	6 Prs.	} Standards are in Steps of 0.5 m/m.
9/15/59246	A1/12108		Bearing, 3rd Standard	"	6 Prs.	
9/15/59247	A1/12109		Bearing, 4th Standard	"	6 Prs.	
			OVERSIZE INSERTS	"		
9/15/59285	A85073		Insert, 0.010"	"	} 6	Cylinder Heads
9/15/59286	A85074		Insert, 0.020"	"		Inlet Valves
9/15/59281	A85093		Insert, 0.010"	"	} 6	} Exhaust Valves
9/15/59282	A85071		Insert, 0.020"	"		
9/15/40317	AB0627		ENGINE OVERHAUL GASKET SET COM- PLETE	"		
9/15/40318	AB0628		ENGINE TOP OVERHAUL GASKET SET COMPLETE	"		
			NOTE:—For Gudgeon Pin and Circlip see page A.9			

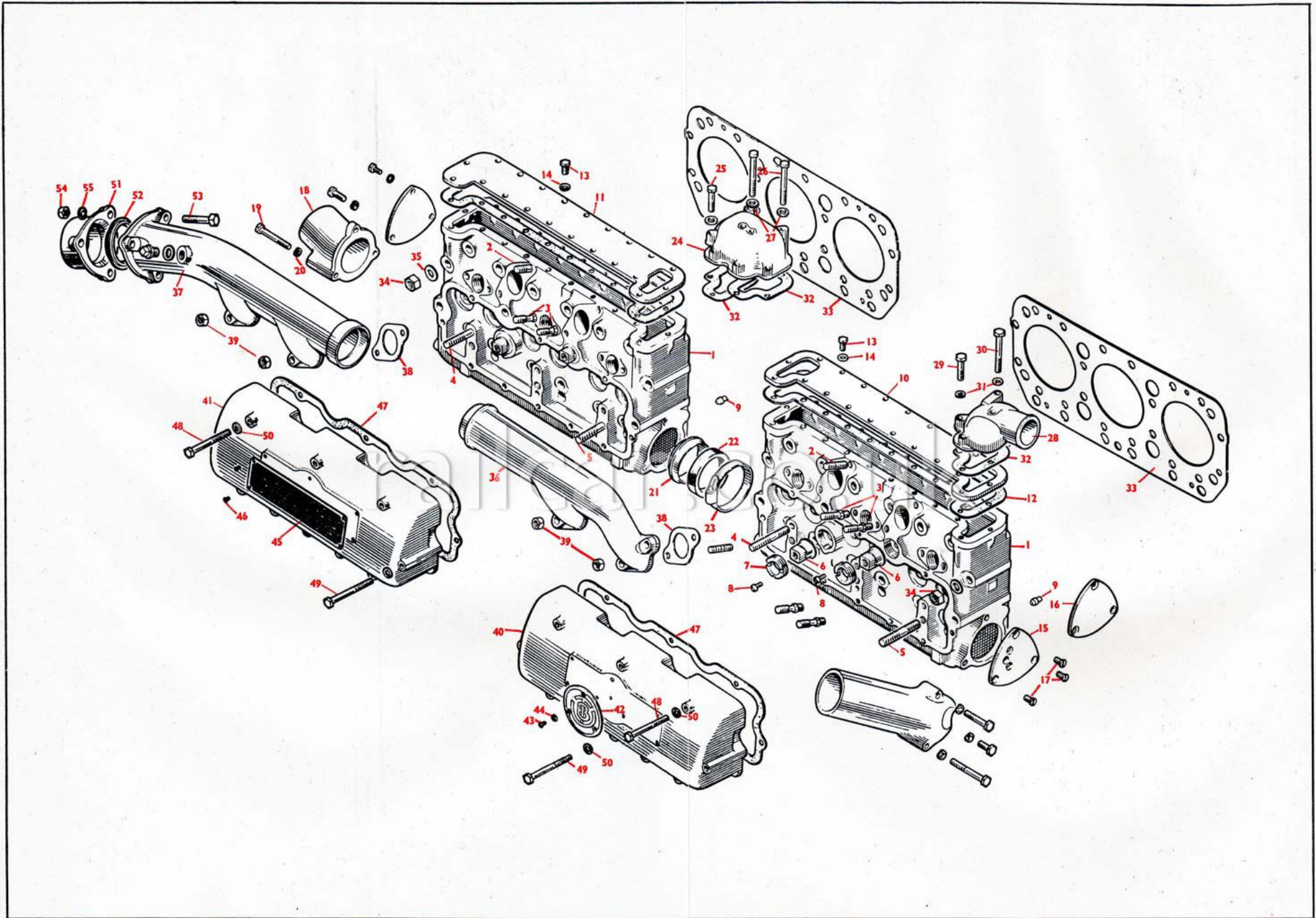
B.R. Cat. No.	A.E.C. Basic Part No.	Plate Ref.	Designation	Used on	No. Req. per Engine	Remarks
			ENGINE—Continued	All Models		
9/15/62910	78-752		OIL COOLER COMPLETE, SERCK No. C8879/1	"	1	
9/15/62900	S1/13319		Adaptor	"	2	
9/15/62935	V1/0191		OIL COOLER STRAP COMPLETE	"	1	
9/15/62942	V1/0190		STRAP COMPLETE WITH PIN	"	1	
9/15/70015	Z47007		Pin	"	2	
9/15/62950	342-54		Belting, $\frac{1}{8}$ " x 2"	"	8 $\frac{1}{2}$ "	
	107-442		Rivet, Bifurcated, Brass, $\frac{1}{8}$ " x $\frac{5}{16}$ "	"	2	
9/15/62902	Z15/30773		Bolt, Special, $\frac{3}{8}$ " B.S.F. x $2\frac{7}{8}$ "	"	1	
	Z32047		Nut, $\frac{3}{8}$ " B.S.F.	"	1	
9/15/62945	Z1/30649		Washer, Special, $\frac{3}{4}$ " Sq. x $\frac{1}{32}$ " Dia.	"	2	
9/15/62951	A1/24452		Hose, Flexible, 2" I/D. x $2\frac{3}{4}$"	"	1	
	332-86		Clip, Jubilee, No. 3	"	2	
9/15/58220	373-414		SPEEDOMETER GENERATOR COMPLETE, SMITHS, TYPE MDG3	"	1	
	90-164		Locknut, $\frac{5}{8}$ " B.S.F., "Simmonds" Nyloc Type NP-F106	"	3	
9/15/58240	Z4/30699		Washer, Steel, Bright, $\frac{5}{16}$ "	"	3	
9/15/58247	A1/15400		Bevel Wheel, Spiral	"	1	To Mesh with A15466, page A.5
9/15/58203	156-175		Key, $\frac{3}{16}$ " x $\frac{3}{16}$ " x $\frac{3}{8}$ "	"	1	
	86-38		Nut, Slotted, $\frac{5}{8}$ " B.S.F.	"	1	
	100-14		Split Pin, $\frac{1}{8}$ " x $1\frac{1}{2}$ "	"	1	
9/15/58206	Z3/46593		Shim, 0-005"	"	} As req.	
9/15/58207	Z3/46593A		Shim, 0-010"	"		
9/15/58208	Z3/46593B		Shim, 0-030"	"		
			NOTE:—For Oil Cooler Bracket see page A.19			

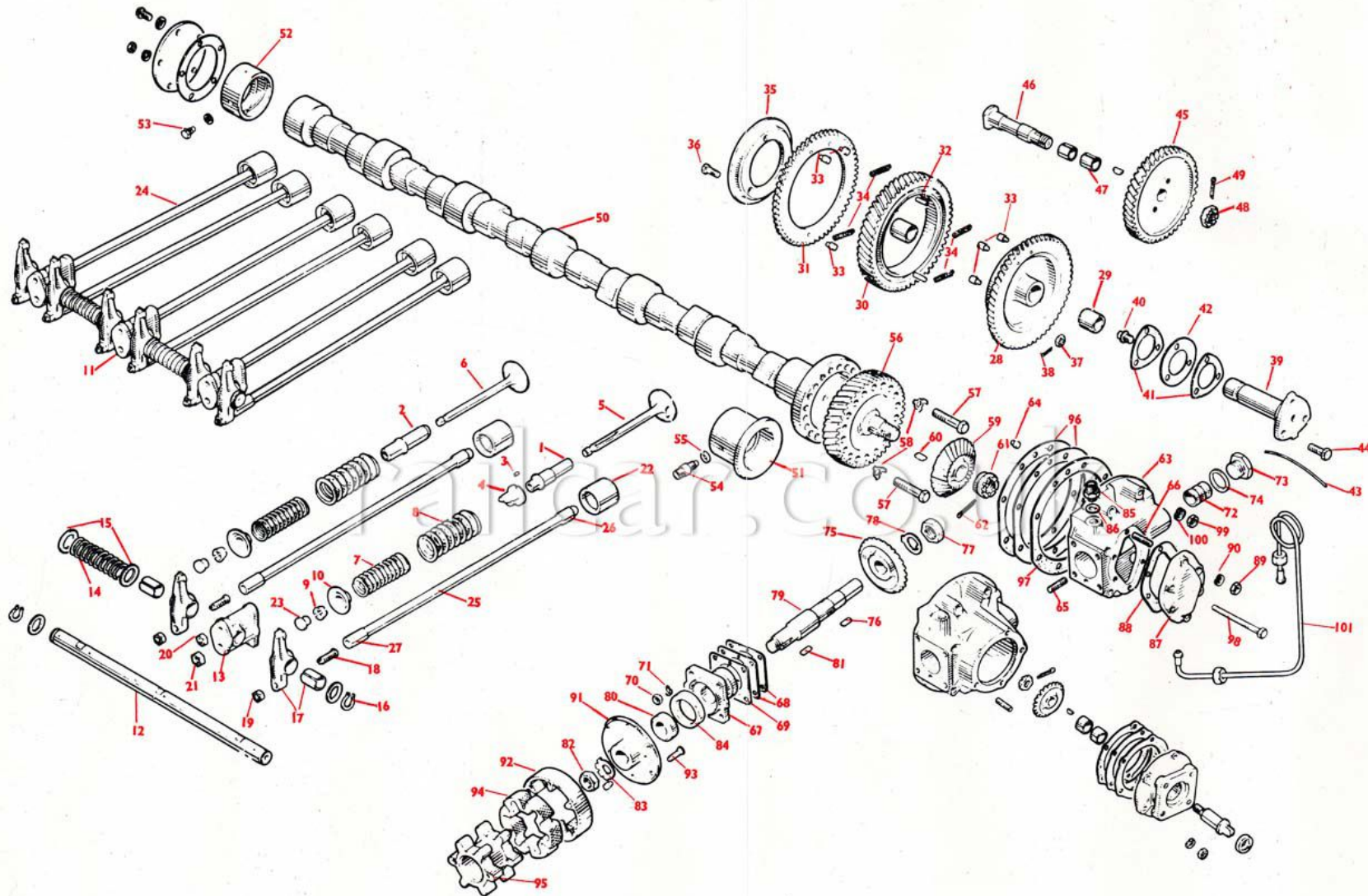
B.R. Cat. No.	A.E.C. Basic Part No.	Plate Ref.	Designation	Used on	No. Req. per Engine	Remarks
9/15/46832	Z2403		ENGINE ACCESSORIES	{ Use with A220AC/ AJ/AK/AL/AZ/BB	1	Frame
9/15/46822	78-598		FUEL FILTER COMPLETE WITH FITTINGS...			
9/15/46823	78-729		FUEL FILTER COMPLETE, C.A.V. TYPE BF11 BS599	"	1	} Cloth Type Element
9/15/46618	132-3		ELEMENT COMPLETE	"	2	
9/15/46809	130-17		Nut, Union, $\frac{7}{8}$ " Gas, Special	"	2	
9/15/46833	Z2404		Cone, Union, Special	"	2	
9/15/46828	78-655		FUEL SHUT-OFF COCK COMPLETE WITH FITTINGS	"	1	Frame
9/15/46618	132-3		FUEL SHUT-OFF COCK COMPLETE, BENTON AND STONE No. B1667A ...	"	1	
9/15/46809	130-17		Nut, Union, $\frac{3}{8}$ " Gas, Special	"	2	
9/15/46834	Z2408		Cone, Union, Special	"	2	
9/15/46835	81-2445		CONTROL CABLE COMPLETE WITH JAW END AND PIVOT PIN	"	1	} On DTO1/12, 1/14, 1/24, 1/51, 1/55, 1/56
9/15/46836	R17128		CONTROL CABLE COMPLETE, ARENS No. BW4/790	"	1	
9/15/46837	Z49319		Jaw End	"	1	
	Z4/30691		Locknut, No. 2 B.A.	"	1	
	100-3		Pivot Pin, Special	"	1	
9/15/56980	81-2385		Washer, Steel, Bright, $\frac{1}{4}$ "	"	1	
9/15/56984	Z44795		Split Pin, $\frac{1}{16}$ " \times $\frac{5}{8}$ "	"	1	
			Oil Pressure Switch, Smiths No. X80808/31/10 ...		4	} Supplied Loose DTO1/14
			Lockwasher, Special, Copper, $\frac{33}{64}$ " Dia....		4	
<p>NOTE:—2 extra Fuel Shut off Cocks, Part No. Z2404 (9/15/46833) are required on DTO1/22,1/34</p>						

B.R. Cat. No.	A.E.C. Basic Part No.	Plate Ref.	Designation	Used on	No. Req. per Engine	Remarks
9/15/46838	AB5106		ENGINE ACCESSORIES—Continued	Use with A220AC/AJ/AK/AL/AZ/BB	1	
9/15/46839	AB5105		AIR CLEANER COMPLETE WITH FITTINGS			
9/15/46851	78-848		AIR CLEANER COMPLETE WITH FELT SEAL	"	1	
9/15/46840	A93722		AIR CLEANER COMPLETE, AIR MAZE	"	1	
9/15/46841	Z2/43261		Ring, Sealing	"	1	
9/15/46842	AB5101		Seal, Felt	"	1	
			AIR CLEANER COVER AND BRACKET COMPLETE	"	1	
	A93723		Cover and Bracket	"	1	Not supplied as Spares
9/15/46843	Z8/30576		Stud, Special, $\frac{5}{16}$ " B.S.F. \times $1\frac{1}{8}$ "	"	4	Air Pre-Cleaner Adaptor
9/15/46844	Z8/30577		Stud, Special, $\frac{3}{8}$ " B.S.F. \times $2\frac{3}{4}$ "	"	3	Air Cleaner
9/15/46845	AB5103		AIR PRE-CLEANER COMPLETE WITH ADAPTOR	"	1	
9/15/46846	78-780		AIR PRE-CLEANER COMPLETE AC SPHINX No. 1574185	"	1	
9/15/46847	A93724		Adaptor	"	1	
9/15/46848	Z44247		Joint	"	1	} Air Pre-Cleaner Adaptor
	85-34		Nut, Plain, $\frac{3}{8}$ " B.S.F.	"	4	
	135-34		Washer, Grover, $\frac{3}{8}$ "	"	4	
9/15/46849	Z2/43262		Felt, Seal, Outer	"	1	
	Z47513		Wing Nut, $\frac{3}{8}$ " B.S.F.	"	3	} Air Cleaner
	135-4		Washer, Thackray, $\frac{3}{8}$ "	"	3	
9/15/46850	A1/24495		Hose, Flexible, $3\frac{1}{2}$" I/D. \times 22'	"	1	2 Off on DTO1/54
	332-128		Clip, Jubilee, No. 4X	"	2	
9/15/32201	Z7/30771		Bolt, Special, $\frac{1}{2}$ " B.S.F. \times $1\frac{3}{4}$ ", Drilled	Not with A220AL/AK/BB	4	} Not DTO1/22, 1/34, 1/51, 1/55, 1/56, 1/57
9/15/32101	Z8/30722		Bolt, Special, $\frac{1}{2}$ " B.S.F. \times $1\frac{1}{2}$ ", Drilled	With A220AL/AK/BB	4	
	86-36		Nut, Slotted, $\frac{1}{2}$ " B.S.F.	} With A220AC/AJ/AK/AL/AZ/BB	4	} Air Cleaner to Frame
	134-6		Washer, Plain, $\frac{1}{2}$ "		4	
	100-11		Split Pin, $\frac{3}{32}$ " \times 1"		4	

B.R. Cat. No.	A.E.C. Basic Part No.	Plate Ref.	Designation	Used on	No. Req. per Engine	Remarks
			ENGINE SUSPENSION	Use with A220AC/AJ/AK/AL/AZ/BB		
9/15/32189	Y1436		REAR MOUNTING BRACKET COMPLETE	"	1	Inner
	Y10281		Bracket	"	1	Not supplied as Spares
9/15/32191	A88031		Bush, Metalastik, 13/1055	"	1	
9/15/32101	Z8/30722		Bolt, Special, $\frac{1}{2}$ " B.S.F. \times $1\frac{1}{2}$ ", Drilled	"		Not DTOI/22, 1/34, 1/51, 1/55, 1/56, 1/57
9/15/32201	Z7/30771		Bolt, Special, $\frac{1}{2}$ " B.S.F. \times $1\frac{3}{8}$ ", Drilled	"	4	DTOI/22, 1/34, 1/51, 1/55, 1/56, 1/57
	86-36		Nut, Slotted, $\frac{1}{2}$ " B.S.F.	"	4	} Bracket to Frame
	134-6		Washer, Plain, $\frac{1}{2}$ "	"	4	
	100-11		Split Pin, $\frac{3}{32}$ " \times 1"	"	4	
	Y30432		Shackle	"	2	
9/15/32192	Z49807		Bolt, Special, $\frac{3}{8}$ " B.S.F. \times 4-60", Drilled	"	2	} Inner Support
9/15/32193	86-39		Nut, Slotted, $\frac{3}{8}$ " B.S.F.	"	2	
	100-19		Split Pin, $\frac{3}{32}$ " \times 2"	"	2	} Inner Support Shackle
9/15/32194	Y1437		REAR MOUNTING BRACKET COMPLETE	"	1	
	Y10282		Bracket	"	1	Outer
9/15/32191	A88031		Bush, Metalastik, 13/1055	"	1	Not supplied as Spares
9/15/32185	Z14/30794		Bolt, Special, $\frac{1}{2}$ " B.S.F. \times $1\frac{3}{8}$ ", Drilled	"		Not DTOI/22, 1/34, 1/51, 1/55, 1/56, 1/57
9/15/32201	Z7/30771		Bolt, Special, $\frac{1}{2}$ " B.S.F. \times $1\frac{3}{8}$ ", Drilled	"	4	DTOI/22, 1/34, 1/51, 1/55, 1/56, 1/57
	86-36		Nut, Slotted, $\frac{1}{2}$ " B.S.F.	"	4	} Bracket to Frame
	134-6		Washer, Plain, $\frac{1}{2}$ "	"	4	
	100-11		Split Pin, $\frac{3}{32}$ " \times 1"	"	4	
	Y30432		Shackle	"	2	
9/15/32192	Z49807		Bolt, Special, $\frac{3}{8}$ " B.S.F. \times 4-60", Drilled	"	2	} Outer Support
9/15/32193	86-39		Nut, Slotted, $\frac{3}{8}$ " B.S.F.	"	2	
	100-19		Split Pin, $\frac{3}{32}$ " \times 2"	"	2	
9/15/32196	Y1438		TIE ROD BRACKET COMPLETE WITH LINK	"	1	
9/15/32197	Z2409		TIE ROD BRACKET WITH BUSH	"	1	
	Y10283		Bracket	"	1	Not supplied as Spares
9/15/32113	A88026		Bush, Silent Bloc, Special	"	1	
9/15/32199	Z2402		TIE ROD EYE BOLT COMPLETE	"	1	
	90-38		Locknut, $\frac{3}{8}$ " B.S.F.	"	2	
9/15/32123	Y30412		Link, Tie Rod	"	2	
9/15/32200	Z9/30756		Bolt, Special, $\frac{7}{16}$ " B.S.F. \times $2\frac{1}{2}$ ", Drilled	"	2	} Tie Rod Link
	86-35		Nut, Slotted, $\frac{7}{16}$ " B.S.F.	"	2	
	100-9		Split Pin, $\frac{3}{32}$ " \times $1\frac{1}{4}$ "	"	2	
9/15/32201	Z7/30771		Bolt, Special, $\frac{1}{2}$ " B.S.F. \times $1\frac{3}{8}$ ", Drilled	"	2	} Tie Rod to Member
	86-36		Nut, Slotted, $\frac{1}{2}$ " B.S.F.	"	2	
	134-6		Washer, Plain, $\frac{1}{2}$ "	"	2	
	342-417		Washer, Taper, $\frac{1}{2}$ ", Special	"	2	
	100-11		Split Pin, $\frac{3}{32}$ " \times 1"	"	2	

B.R. Cat. No.	A.E.C. Basic Part No.	Plate Ref.	Designation	Used on	No. Req. per Engine	Remarks
			ENGINE SUSPENSION—Continued	Use with A220AC/ AJ/AK/AL/AZ/BB		
9/15/32202	5058-1		SHOCK ABSORBER COMPLETE, WOOD- HEAD MONROE No. 0-3247	"	1	
9/15/32203	Z10677		Bush, Rubber, Woodhead Monroe	"	4	Supplied with Shock Absorber
9/15/32204	Z6/30669		Washer, Special, $\frac{3}{8}$ " I/D. \times 1.25" O/D.	"	2	
9/15/32205	Z51784		Pin, Anchor	"	2	
	85-36		Nut, Plain, $\frac{5}{16}$ " B.S.F.	"	2	
	135-33		Washer, Grover, $\frac{5}{16}$ "	"	2	
	86-38		Nut, Slotted, $\frac{5}{16}$ " B.S.F.	"	2	} Anchor Pin
	134-8		Washer, Plain, $\frac{5}{16}$ "	"	2	
	100-14		Split Pin, $\frac{1}{8}$ " \times $1\frac{1}{2}$ "	"	2	
9/15/32206	Y10284		Bracket, Front Mounting	"	1	
9/15/32207	Z11/30731		Bolt, Special, $\frac{5}{16}$ " B.S.F. \times $2\frac{3}{8}$ ", Drilled	"	} 1	Not DTO1/22, 1/34, 1/51, 1/55, 1/56, 1/57 DTO1/22, 1/34, 1/51, 1/55, 1/56, 1/57
9/15/32209	Z19/30738		Bolt, Special, $\frac{5}{16}$ " B.S.F. \times $2\frac{3}{8}$ ", Drilled	"		
9/15/32190	Z11/30730		Bolt, Special, $\frac{5}{16}$ " B.S.F. \times $1\frac{7}{8}$ ", Drilled	"	2	} Front Mount- ing Bracket
	86-38		Nut, Slotted, $\frac{5}{16}$ " B.S.F.	"	3	
	134-8		Washer, Plain, $\frac{5}{16}$ "	"	1	
9/15/32208	342-419		Washer, Taper, $\frac{5}{16}$ "	"	2	
	100-16		Split Pin, $\frac{1}{8}$ " \times $1\frac{3}{4}$ "	"	3	





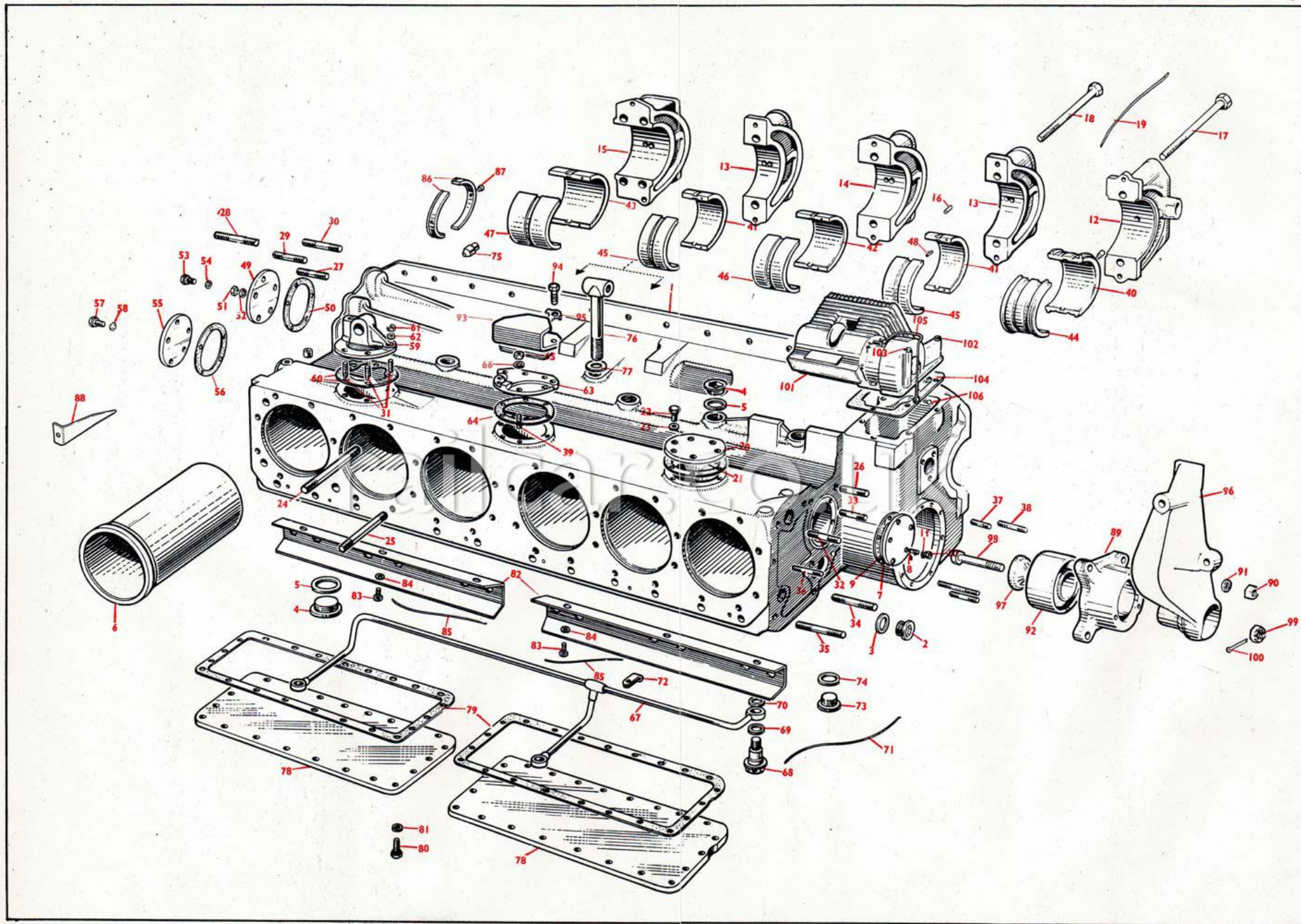
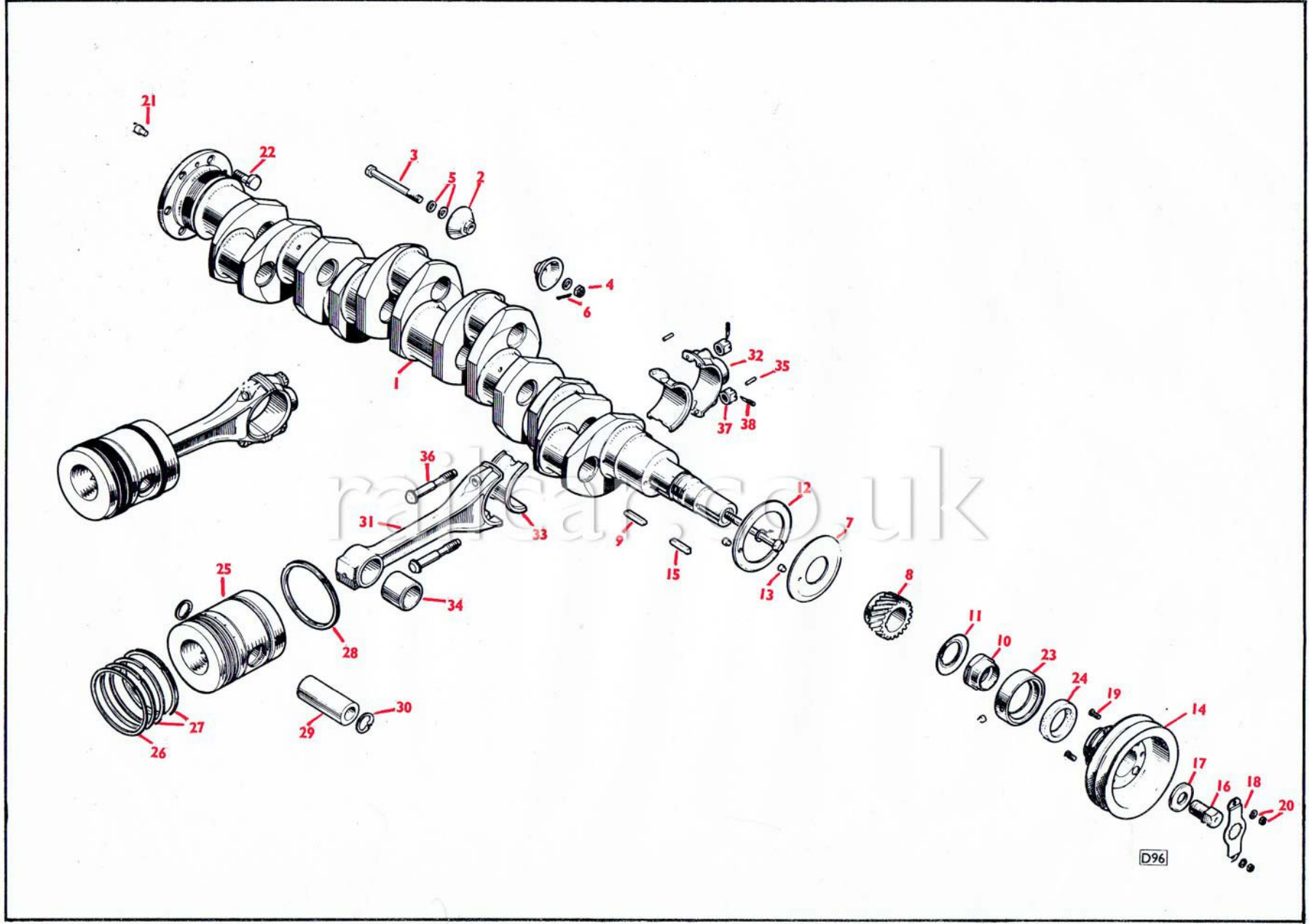
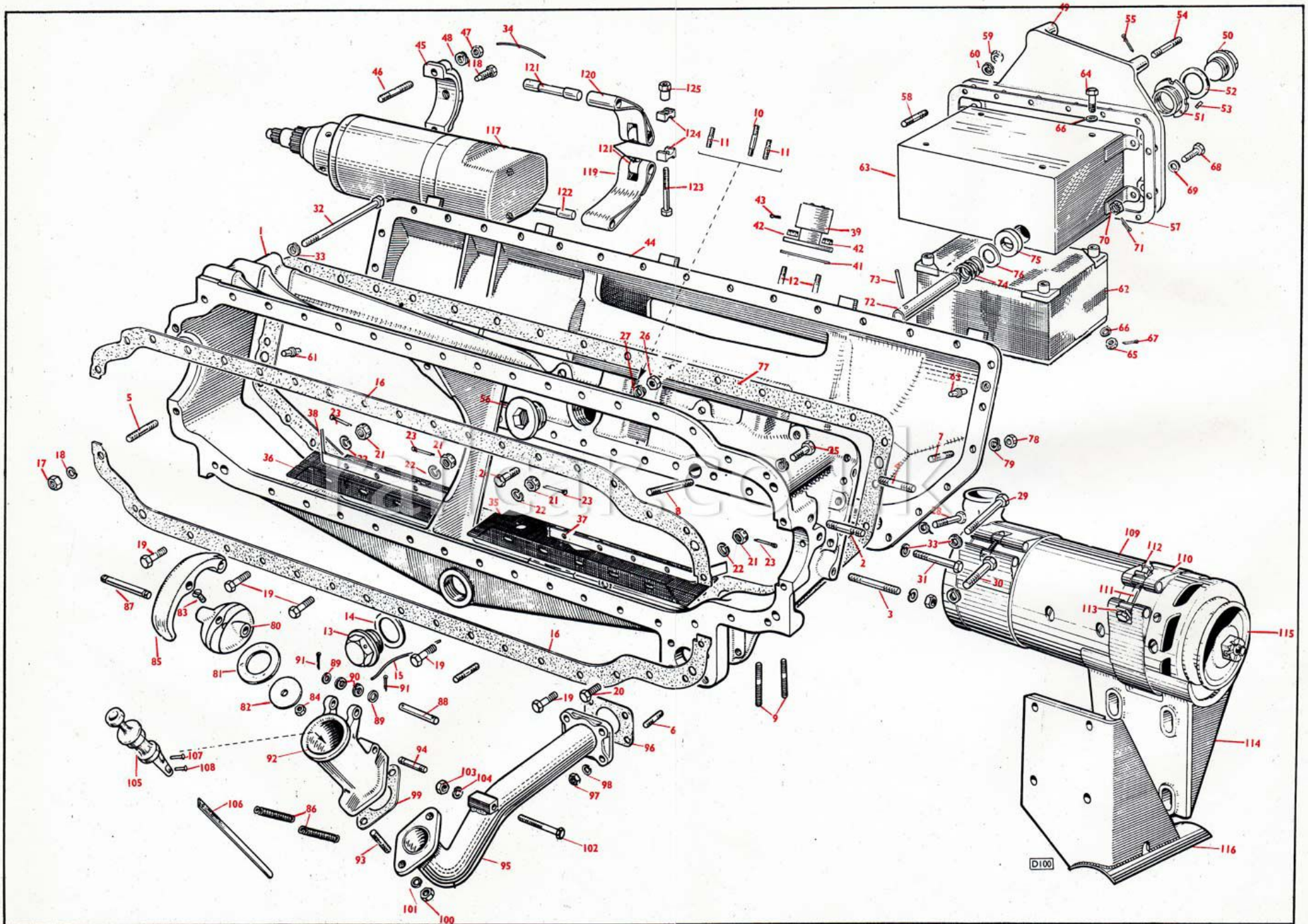
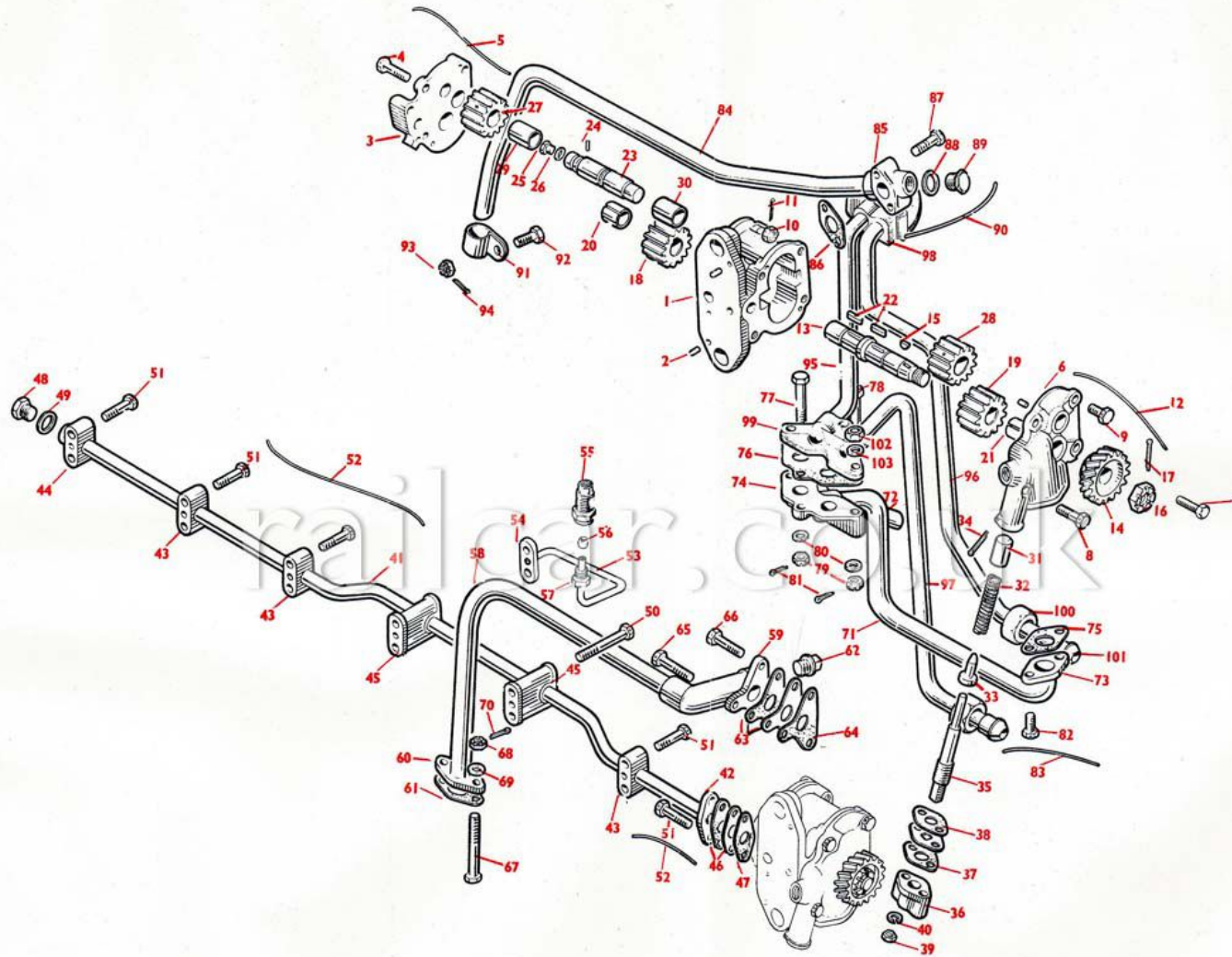


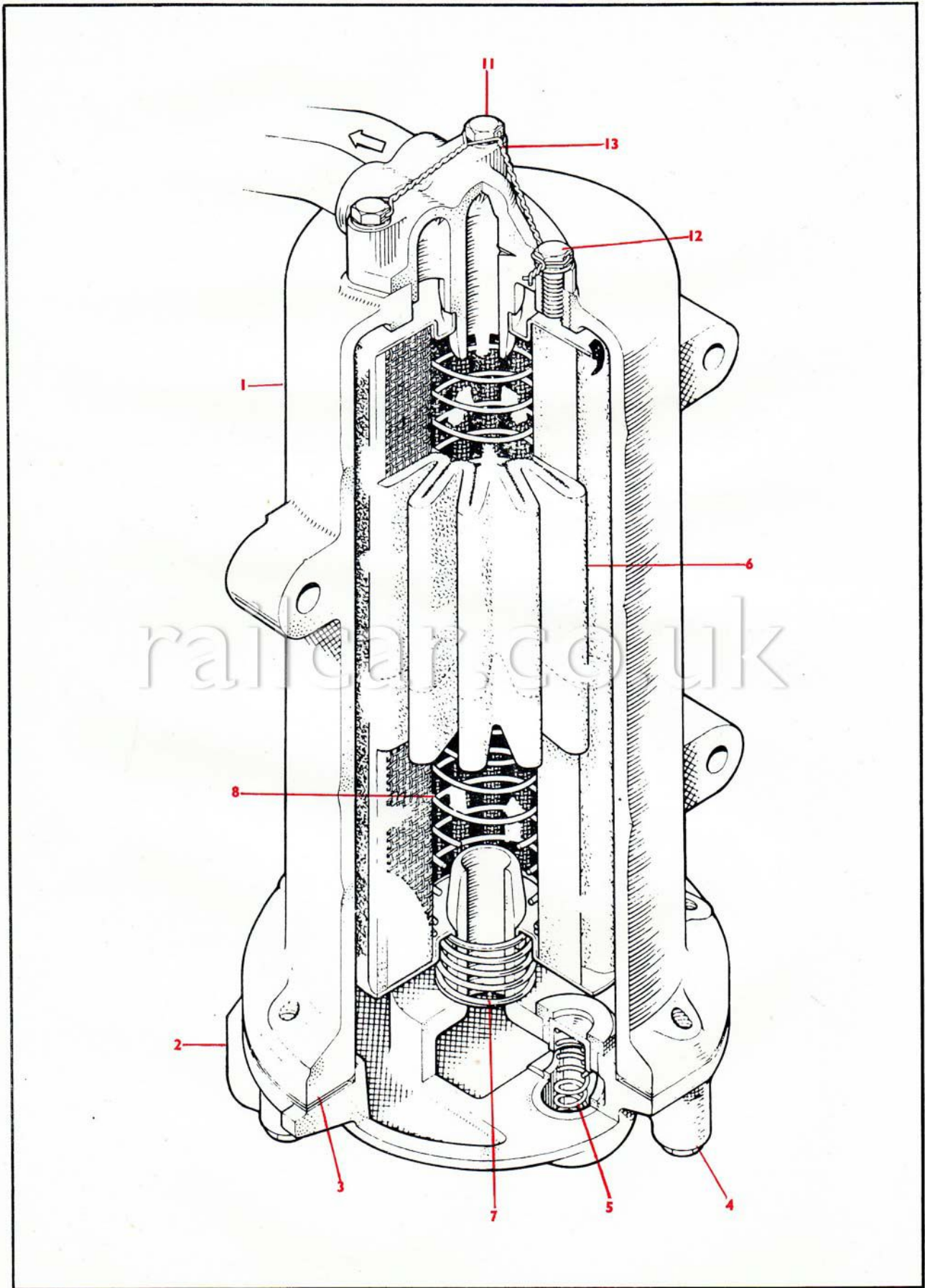
Plate A.4.

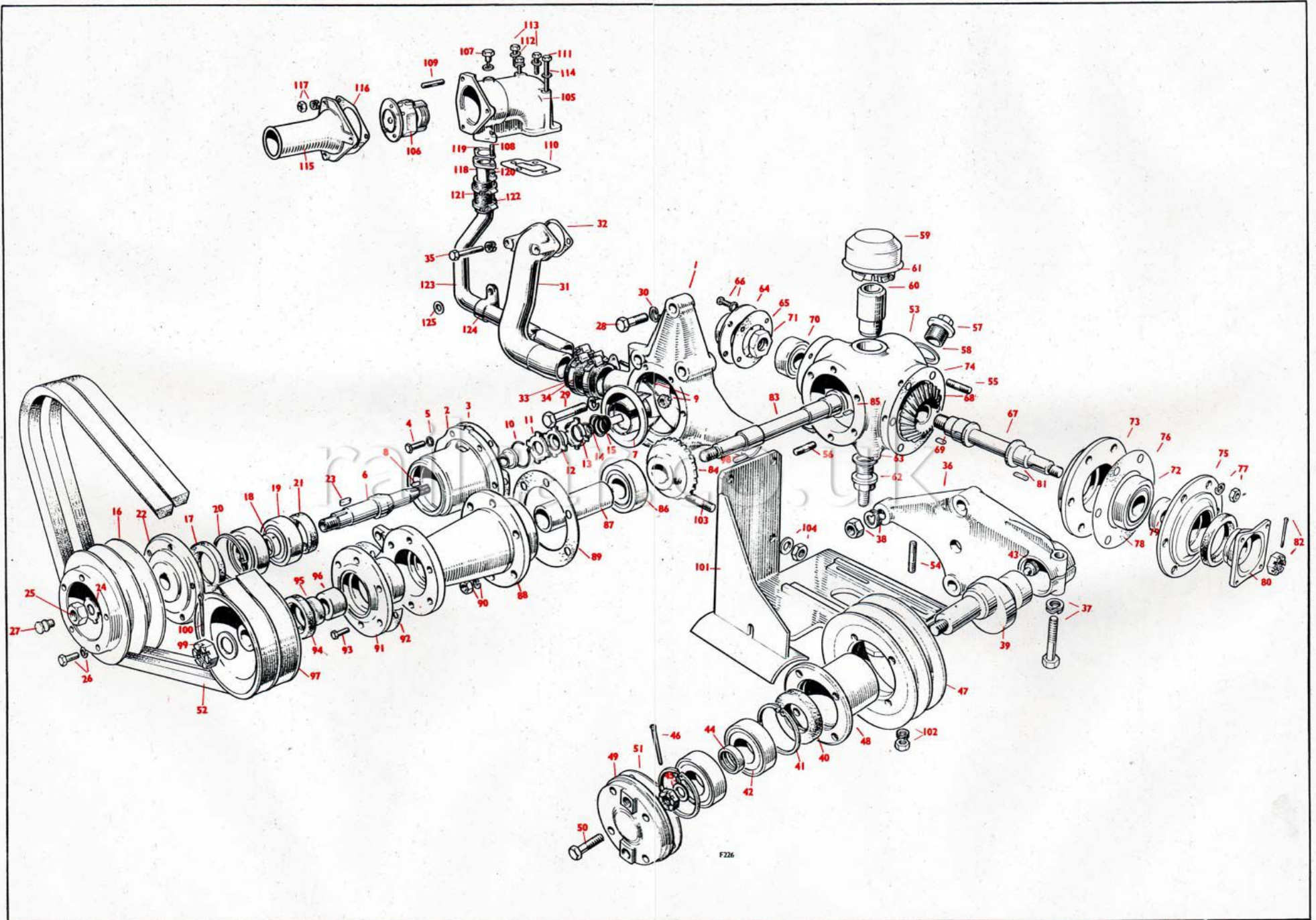
CRANKSHAFT, CONNECTING RODS AND PISTONS











F226

