

D.K.P

DERBY

# Engineering Instruction

No. MD / 384  
ISSUE 2

**TITLE** REPLACEMENT OF LOOSE RIVETS, GEARBOX REAR MOUNTING BRACKETS AND TRIMMERS, CLASS 108 DMU

**LOCOMOTIVES, VEHICLES OR EQUIPMENT**

Description	Serial Nos.	Lot Nos.
CLASS 108 POWER CARS	50599 to 50646	30406, 7, 8
	50924 to 50935	30460
	50938 to 50987	30465
	51416 to 51424	30498
	51561 to 51572	30461
	51901 to 51950	30601
	52037 to 52065	30860

**LOCOMOTIVE, VEHICLE OR EQUIPMENT CODES**  
DMU 108

**COMPONENT CODES**

0610

**INSTRUCTION**

**WORKS | DEPOTS**

This instruction supersedes Engineering Instruction MD/384 Issue 1 dated 30 Apr 82, which shall be destroyed.

Where rivets fastening the gearbox rear mounting brackets to the mounting trimmer and the trimmer to the underframe longitudinals are found to be loose they are to be replaced as follows:-

In Depots : loose rivets to be removed and replaced by high tensile steel bolts, prevailing-torque nuts, and plain washer. (See Table)

In Main Works : Joints to be examined for signs of movement and to be hammer tested to check for looseness. Joints showing evidence of movement, or having loose rivets, or having high tensile bolts and prevailing torque nuts fitted by Depots as above, to be completely disassembled, cleaned, and refastened using either rivets, or Huckbolts, or Avdeloks (See Table). In positions where there is inadequate access to fit rivets, or Huckbolts, or Avdeloks, then high tensile bolts and prevailing torque nuts may be fitted.

To prevent intermetallic corrosion occurring between the steel bolt or rivet and the aluminium underframe members, the contacting surfaces should be painted before fastening.

Continued.....

Signed AC Shore Date 17/3/83 Corres. Ref. TSU/177-2-342 (CGW)

Countersigned MV Casey D. of M & E.E. Telephone No. 056-3525

**For B.R.E.L. HQ. USE ONLY**

B.R.E.L. Eng. Inst. No.	Type of Instruction		Estimates of unit cost change are/are not required	
	Recurring	Non-Recurring	Recurring	Non-Recurring

Redistribution Panel

To :-

- Divisional / Works Manager -----
- Works / Depot -----

Please acknowledge receipt of this Engineering Instruction

Signed \_\_\_\_\_ Corres. Ref. \_\_\_\_\_ Date \_\_\_\_\_  
for D.M. & E.E. / MD, B.R.E.L.

■ Delete whichever is not applicable



# Engineering Instruction

(Continuation)

No.	MD/384
	ISSUE 2
SHEET No. 3 of 3	

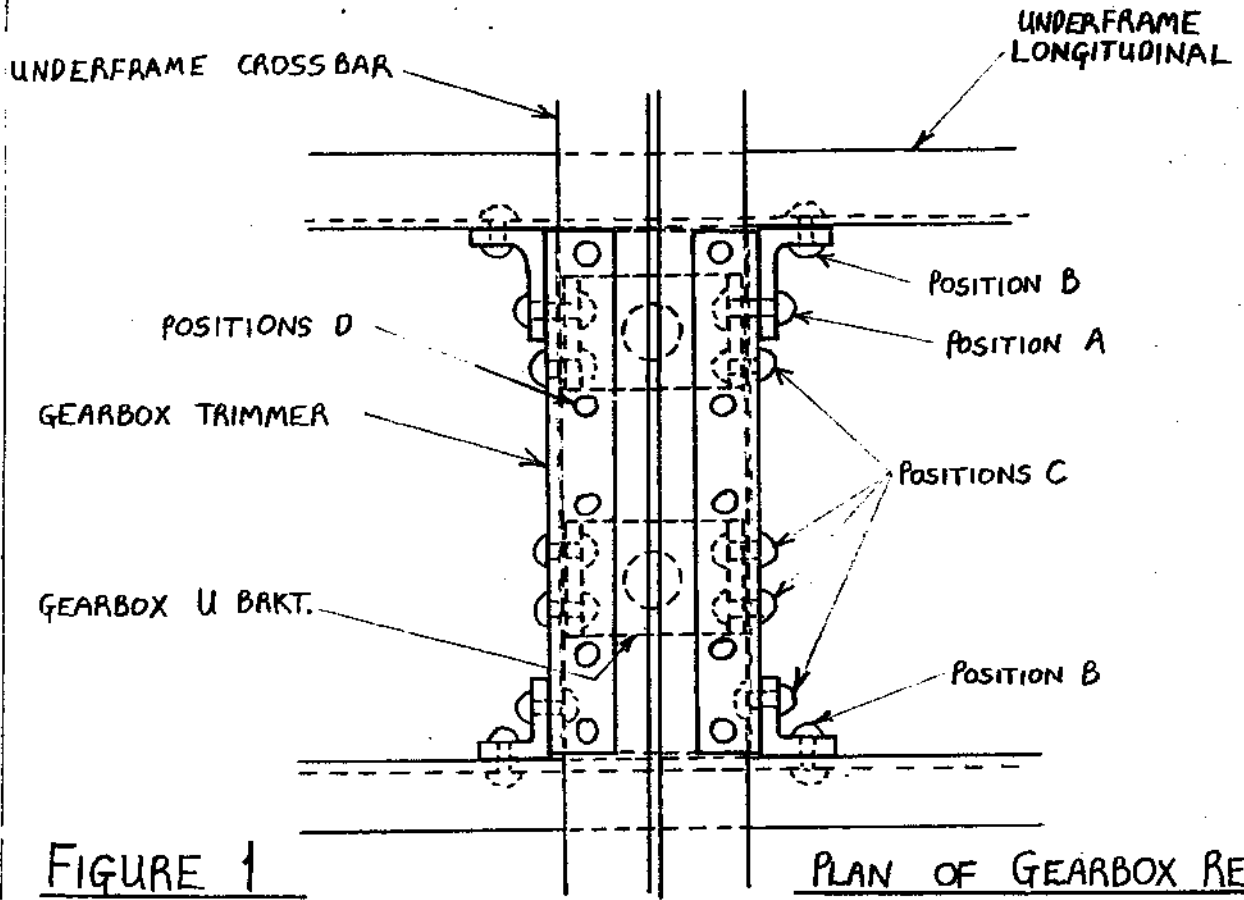


FIGURE 1

PLAN OF GEARBOX REAR MOUNTING TRIMMER